



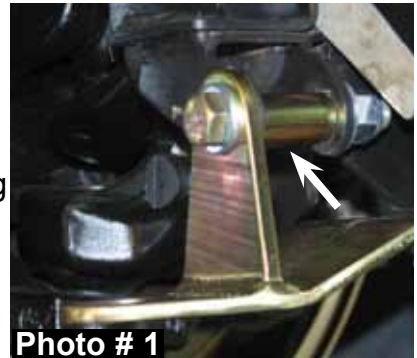
**03-08 Dodge 2500 / 3500**  
**4WD Dual Steering Stabilizer**  
**Part # 7213**

ITEM#	DESCRIPTION	QTY
7000WS	WHITE STEERING DAMPER	2
7213-MB	03DODGE,MAIN BRACKET	1
7213-PB	03DODGE,PASSENGER BRACKET	1
7213-DB	03DODGE,DRIVER BRACKET	1
12X3FTB	1/2 X 3 FINE THREAD BOLT	1
12X212FTB	1/2 X 2 1/2 FINE THRD BOLT	1
12X112FTB	1/2 X 1 1/2 FINE THRD BOLT	1
38X114FTB	3/8 X 1 1/4 FINE THD/GRD 8	4
516X114X134U	5/16 X 1 1/4 X 1 3/4 U-BT R	2
140629	EB6 STUD BAG - P932/140629	4
142121	ES24 SLEEVE/402087 1.38"	1

ITEM#	DESCRIPTION	QTY
81004	TAPERED SLEEVE, 1/2" I.D.	1
12FTN	1/2-20 FINE N/I LOCK NUT	3
38FTN	3/8-24 FINE N/I LOCK NUT	4
516CTN	5/16-18 COARSE N/I LOCK NUT	4
12SAEW	1/2 SAE WASHER	6
38SAEW	3/8 SAE WASHER	8
516SAEW	5/16 SAE WASHER	8
HSS	HYDRO SHOCK DECAL	2
B10RS	RED BOOT	2
BTIE	RED BOOT TIE	2
HOURLASS 5/8	SHOCK BUSHING	4

**Installation:**

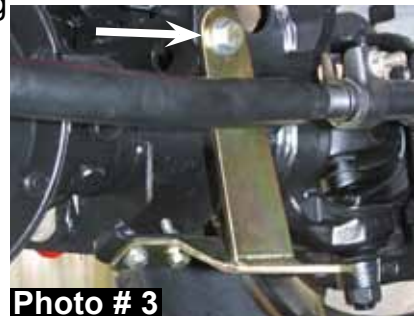
1. Park the vehicle on flat level ground & set the emergency brake.
2. Turn the tires / wheels to a straight forward position.
3. Remove the OEM stabilizer from the OEM axle bracket & draglink.
4. Install the new Skyjacker passenger side bracket to the OEM steering stabilizer mount on the axle using the supplied 1/2" x 3" fine thread bolt, washers, & nut. **Note:** Be sure to install the 1.38" anti-crush sleeve inside the OEM mount (Part # 142121-See Photo # 1)
5. Mark & drill the two lower mounting holes to 3/8". Once drilled, install the supplied 3/8" x 1 1/4" fine thread bolts, washers, & nuts. (See Photo # 2)
6. Install the new Skyjacker driver side bracket to the mounting hole in the bottom of the coil spring mount using the supplied 1/2" x 1 1/2" fine thread bolt, washers, & nut. (See Arrow in Photo # 3) Once installed, mark & drill the two lower holes as in Step # 5. Install using the supplied 3/8" x 1 1/4" fine thread bolts, washers, & nuts.
7. Install the tapered sleeve (Part # 81004) into the OEM mount on the drag link. Install the new Skyjacker main bracket at this location using the supplied 1/2" x 2 1/2" fine thread bolt, 5/16" x 1 1/4" x 1 3/4" u-bolts, washers, & nut. (See Photo # 4)
8. Install the new double ended studs to each bracket. These studs will mount to the top of the outer brackets & to the bottom of the main bracket. Slide the new Skyjacker shock boots over the shafts of the new Skyjacker steering stabilizers & attach with the supplied boot ties. Install the bushings into each end of the new steering stabilizers & attach to the studs of each bracket & tighten. (See Photo # 5)
9. Cycle steering left to right & check all parts for adequate clearance. Retighten all hardware after the first 100 miles.



**Photo # 1**



**Photo # 2**



**Photo # 3**



**Photo # 4**



**Photo # 5**



**Photo # 6**