

INSTALLATION & CARE

2011-2016 FORD F250 PROJECTOR HEADLIGHTS INSTALLATION INSTRUCTIONS

BEFORE INSTALLATION:

- If you experience any difficulties that the instructions did not cover, please seek assistance at a local automotive shop.
- Please wear proper protective equipment before you work on any vehicle.
- An assistant is recommended when removing the front bumper from your vehicle.
- Please be cautious when working with the bumper or any parts belonging to the vehicle's body to prevent scratching.
- Do not make direct contact with the halogen bulbs or the wire assembly until the unit has cooled down after use.

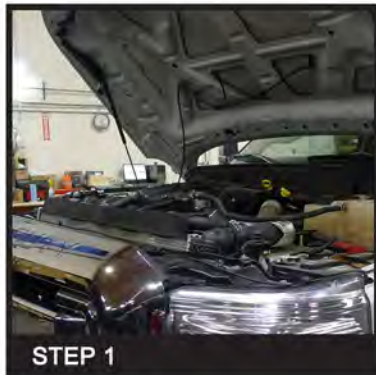
TOOLS AND SUPPLIES REQUIRED

1/4" Ratchet	Trim Pad Remover	10 mm Socket	Flathead screwdriver
			
Plastic Pry bar	6 mm Socket Extension		
			

PRODUCT NUMBER

2LHP-F25011-SQ-RS
2LHP-F25011G-SQ-RS
2LHP-F25011JM-SQ-RS
2LHP-F25011SM-SQ-RS

LET'S START THE INSTALLATION



STEP 1

Raise the hood



STEP 2

Remove the two fasteners and the four 10mm bolts on top of the front grille



STEP 3A

Press down the five clips on the bottom of the front grille



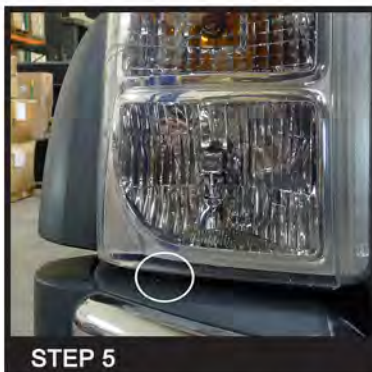
STEP 3B

Press down the five clips on the bottom of the front grille



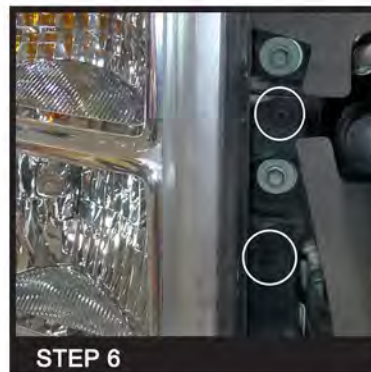
STEP 4

Remove the front grille



STEP 5

Remove the 10mm headlight bolt at the bottom of the headlight



STEP 6

Remove the two 10mm headlight bolts at the side of the grille



STEP 7

Remove the 10mm headlight bolt at the top of the headlight



STEP 8

Uninstall the factory headlight housing



STEP 9

Disconnect the headlight wire harness connectors



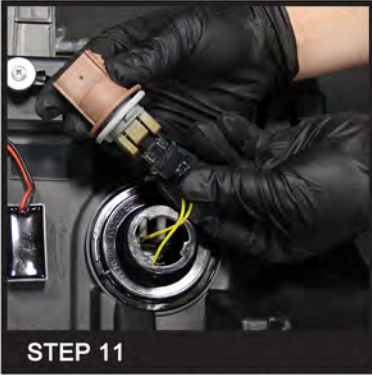
STEP 10A

Remove the two light sockets from the harness



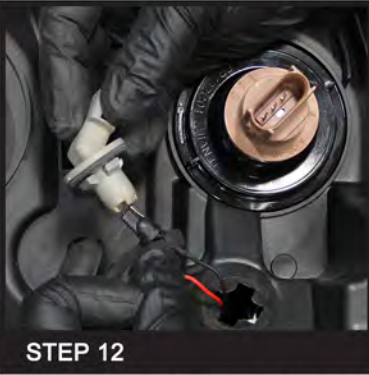
STEP 10B

Remove the light bulbs from the light sockets



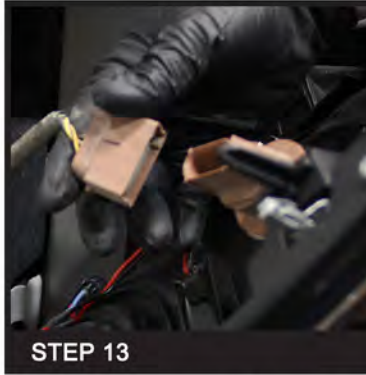
STEP 11

Install the signal light sockets to the new headlight, (+) to (+)



STEP 12

Install the parking light sockets to the new headlight, (+) to (+)



STEP 13

Connect the headlight wire harness



STEP 14

Seat the new headlight assembly in place



STEP 15

Reinstall the two 10mm headlight bolts at the side of the grille



STEP 16

Reinstall the 10mm headlight bolt at the top of the headlight



STEP 17

Reinstall the 10mm headlight bolt at the bottom of the headlight



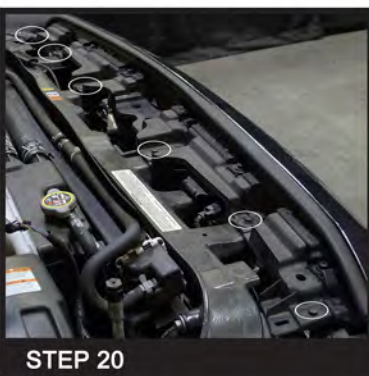
STEP 18

Please repeat the steps from 5 to 17 for the opposite side



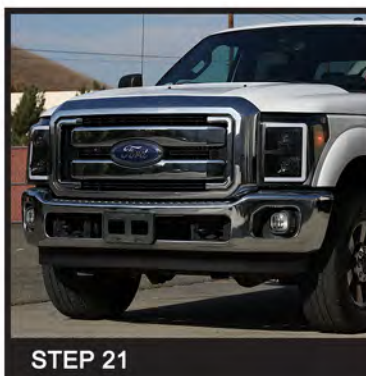
STEP 19

Reinstall the front grille



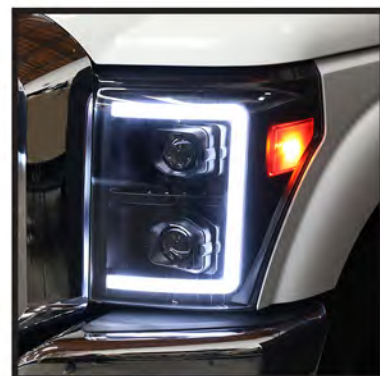
STEP 20

Reinstall the two fasteners and the four 10mm bolts on the top of the front grille



STEP 21

Close the hood to complete the installation



Learn more about custom and factory headlights we have.