

SPEC-D *Tuning*

1994-2001 DODGE RAM HEADLIGHTS INSTALLATION INSTRUCTION



- *If you experienced any difficulties that the instruction did not cover, Please seek local auto shop for advise.
- *Please wear protection before you work on your vehicle.
- *An assistant is helpful when removing the front bumper.
- *Please be careful while working with the bumper or body part to avoid scratching.
- *Do not make direct contact with the halogen bulb or the wire assembly until the unit has cooled down after use.

TOOLS AND SUPPLIES REQUIRED



*Pliers



*Flat-tip screwdriver



*Diagonal cutter



*Ratchet



*Extension



*10 mm Socket

Product Part Number:

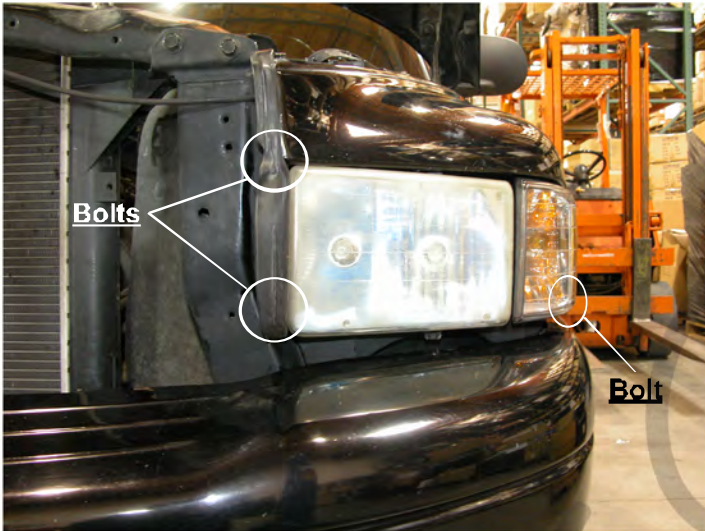
2LHP-RAM94B-TM
2LHP-RAM94JMB-TM
2LHP-RAM94-TM
2LHP-RAM94JM-TM



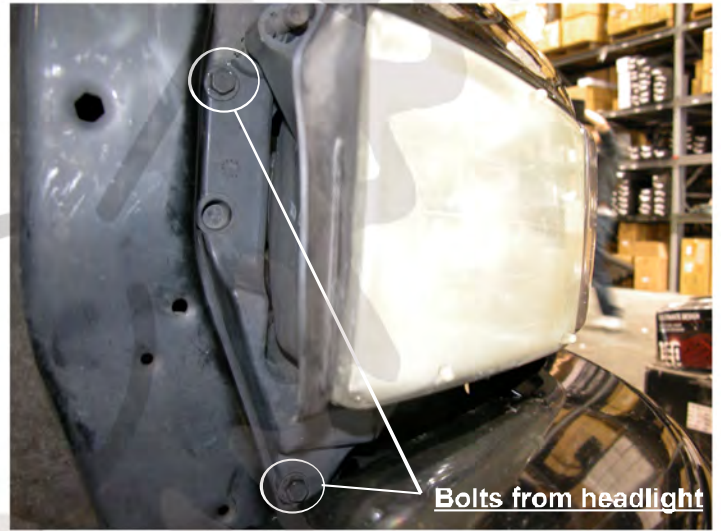
1994-2001 DODGE RAM HEADLIGHT INSTALLATION INSTRUCTION



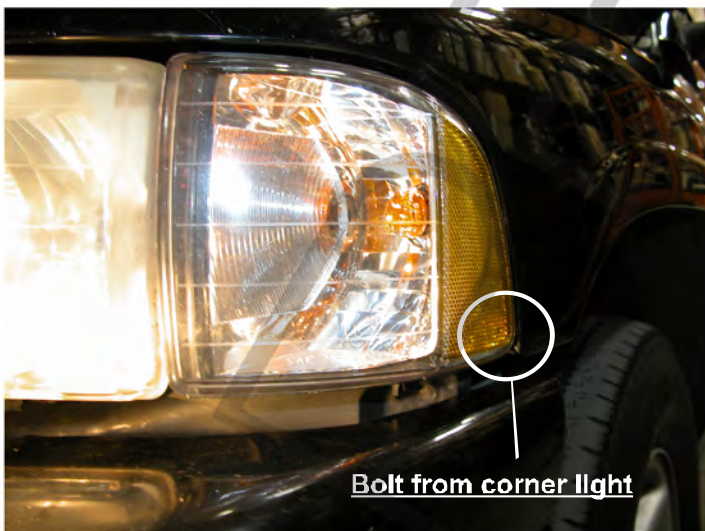
- *If you experienced any difficulties that the instruction did not cover, Please seek local auto shop for advise.
- *Please wear protection before you work on your vehicle.
- *An assistant is helpful when removing the front bumper.
- *Please be careful while working with the bumper or body part to avoid scratching.
- *Do not make direct contact with the halogen bulb or the wire assembly until the unit has cooled down after use.



1. Remove the bolt from headlights and corner lights (BOTH SIDE)



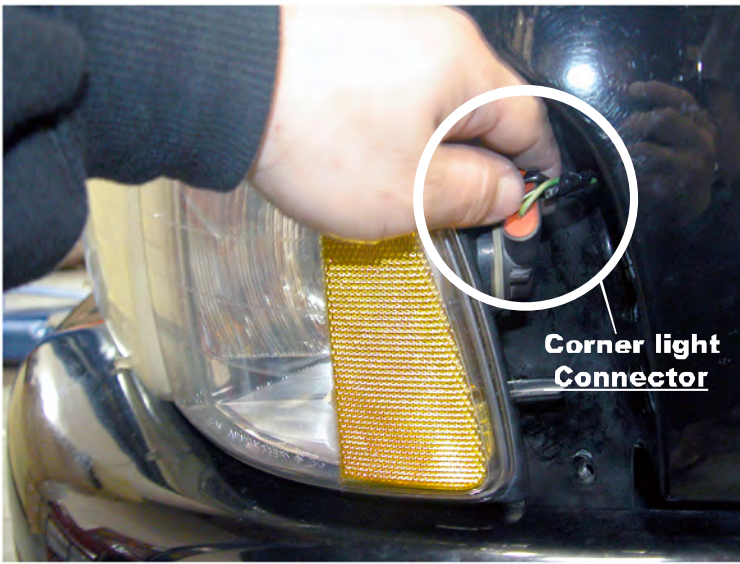
2. Remove the bolt from headlights first (BOTH SIDE)



3. Then remove the bolt from corner light (BOTH SIDE)



4. Pull out the headlight a little bit first (BOTH SIDE)



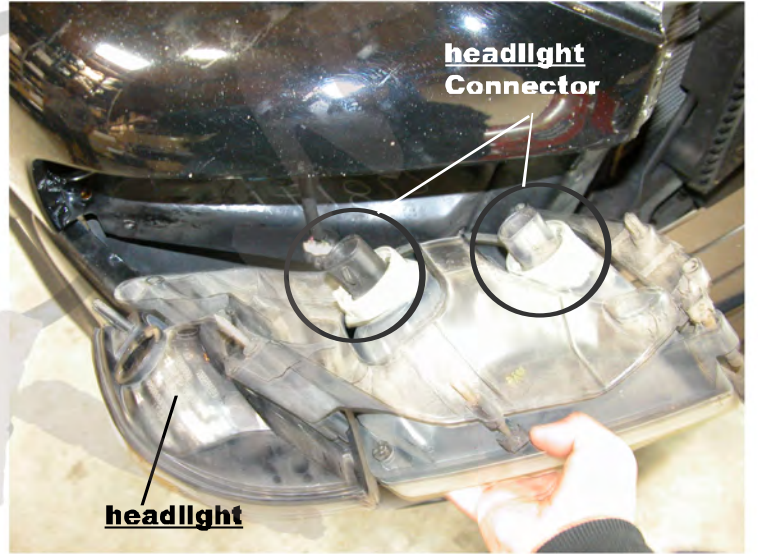
5. Disconnect the connector from corner light (BOTH SIDE)



6. Disconnect the connector from headlight (BOTH SIDE)



If your headlights don't have HALO or L.E.D. You can skip Step 7
7. Please see the Halo and L.E.D installation instruction



8. Connect the connector from headlight (BOTH SIDE)



9. Connect the connector from corner light (BOTH SIDE)



10. Install the headlight (BOTH SIDE)



11. Complete the installation

