

INSTALLATION & CARE

2012-2015 TOYOTA TACOMA PROJECTOR HEADLIGHT INSTALLATION INSTRUCTION

BEFORE INSTALLATION:

- If you experience any difficulties that the instructions did not cover, please seek assistance at a local automotive shop.
- Please wear proper protective equipment before you work on any vehicle.
- An assistant is recommended when removing the front bumper from your vehicle.
- Please be cautious when working with the bumper or any parts belonging to the vehicle's body to prevent scratching.
- Do not make direct contact with the halogen bulbs or the wire assembly until the unit has cooled down after use.

TOOLS AND SUPPLIES REQUIRED

1/4" Ratchet	10 mm Socket	Flathead Screwdriver	Phillips Screwdriver
			
Plastic Pry Bar	Trim Pad Remover		
			

PRODUCT NUMBER

2LHP-TAC12-SQ-RS
2LHP-TAC12JM-SQ-RS
2LHP-TAC12SM-SQ-RS
2LHP-TAC12G-SQ-RS

LET'S START THE INSTALLATION



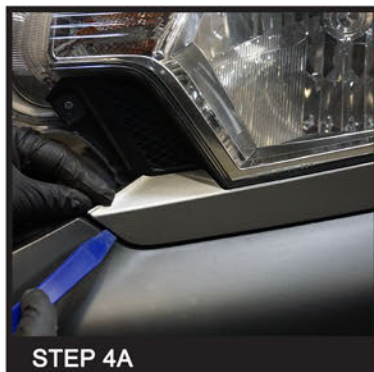
Remove the two plastic retainers and the two 10mm bolts



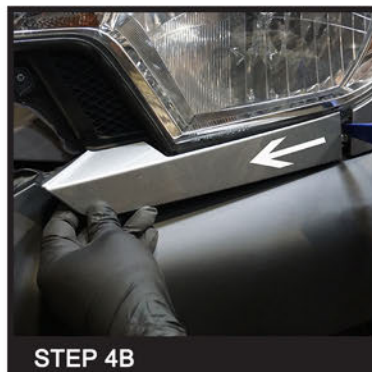
Loosen the top part of the front grille



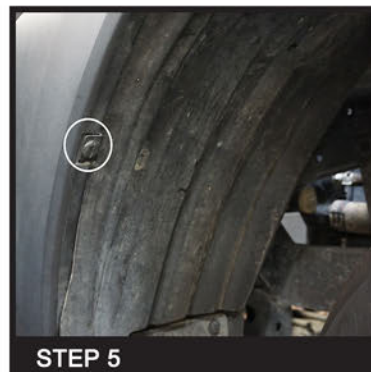
Pull out the bottom to remove the front grille



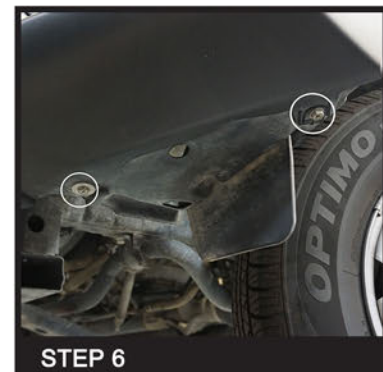
Remove the headlight filler trim panel



Remove the headlight filler trim panel



Remove the plastic retainer



Remove the two 10mm bolts



STEP 7

Pull out the fender wheel well liner



STEP 8

Remove the 10mm nut behind the fender wheel well



STEP 9

Remove the two 10mm headlight bolts at the top



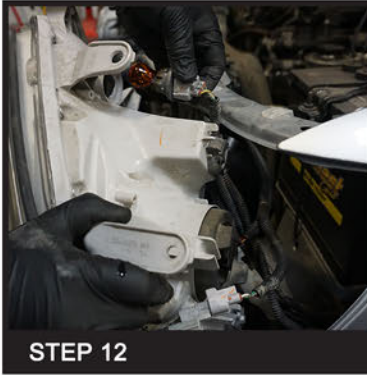
STEP 10

Use the flat head screwdriver to unseat the headlight mounting leg at the side of the grille



STEP 11

Remove the factory headlight housing



STEP 12

Disconnect the headlight harness and remove the factory headlight housing



STEP 13

Remove the signal light socket from the factory headlight housing



STEP 14

Remove the signal light bulb from the socket



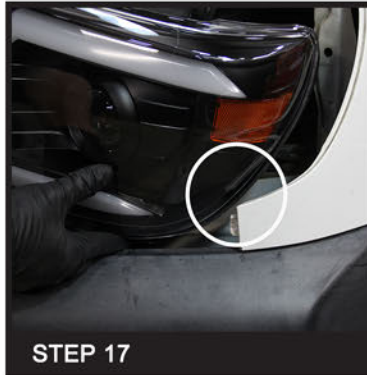
STEP 15

Insert the signal light plug to the light socket, make sure (+) to (+) and (-) to (-)



STEP 16

Install the signal light socket to the new headlight housing



STEP 17

Before installing the new headlight housing, **PLEASE BE CAREFUL not to scratch the lens onto the fender**



STEP 18

Connect the headlight harnesses and seat the new headlight assembly in place



STEP 19

Tighten the two 10mm headlight mounting bolts at the top



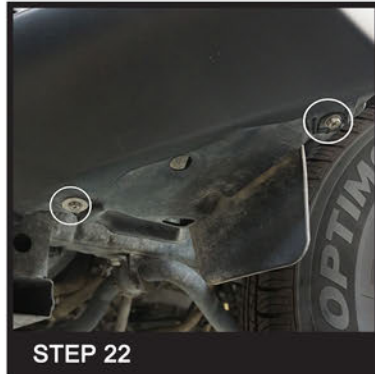
STEP 20

Reinstall the 10mm nut behind the fender wheel well



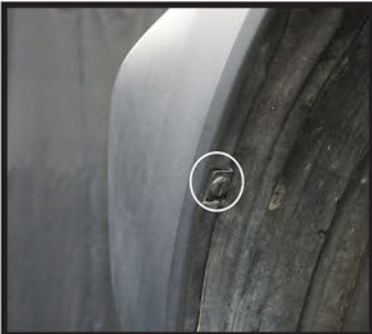
STEP 21

Reinstall the fender wheel well liner



STEP 22

Reinstall the two 10mm bolts



STEP 23

Reinstall the plastic retainer



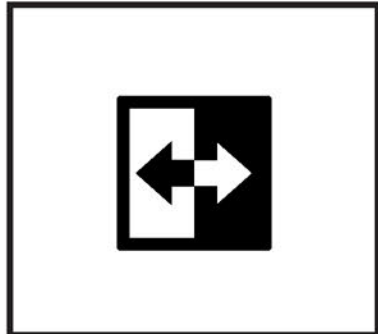
STEP 24A

Reinstall the headlight filler trim panel



STEP 24B

Reinstall the headlight filler trim panel



STEP 25

Please repeat the steps from 4a to 24 for the opposite side



STEP 26

Reinstall the front grille



STEP 27

Reinstall the two plastic retainers and the two 10mm bolts



STEP 28

Close the hood to complete the installation

Learn more about custom and factory headlights we have.