

Installation & CARE

2007-2008 DODGE RAM LED TAILLIGHTS INSTALLATION INSTRUCTION

BEFORE INSTALLATION

- If you experience any difficulties that the instruction did not cover, please seek assistance at local automotive shop.
- Please wear protection before you work on any vehicle.
- An assistant is useful when removing the front bumper from your vehicle.
- Please be cautious when working with the bumper or any parts belonging to the vehicles's body to prevent scratching.
- Do not make direct contact with the halogen bulbs or the wire assembly until the unit has cooled down after use.

TOOLS AND SUPPLIES REQUIRED

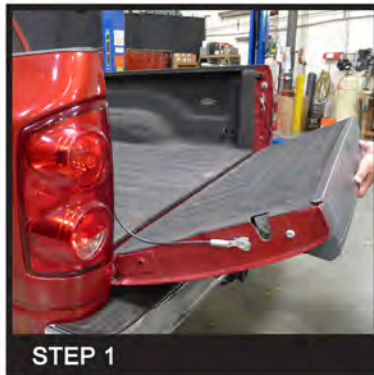
ST25 screwdriver	Plastic Pry bar		
			

PRODUCT NUMBER

LT-RAM07BBLED-TM LT-RAM07RLED-TM
 LT-RAM07GLED-TM LT-RAM07CLED-TM
 LT-RAM07JMLED-TM



LET'S START THE INSTALLATIONS



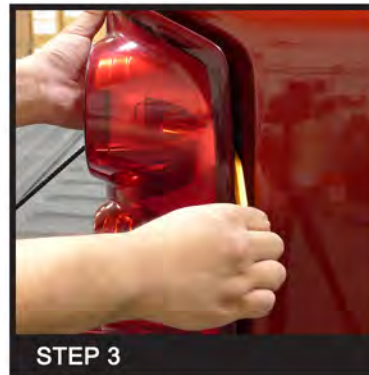
STEP 1

Lower the tailgate



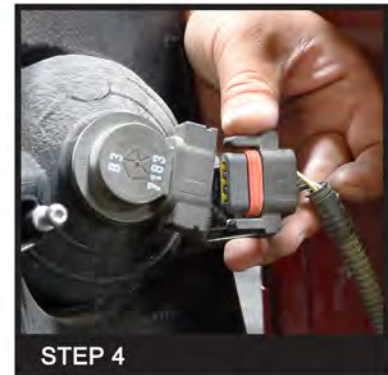
STEP 2

Remove two ST25 screws



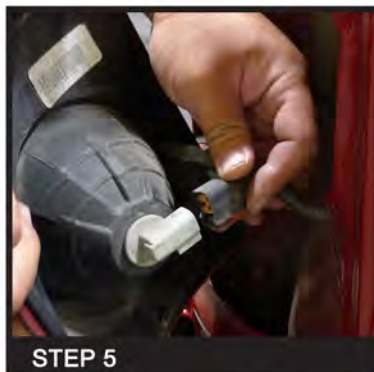
STEP 3

Uninstall tail light



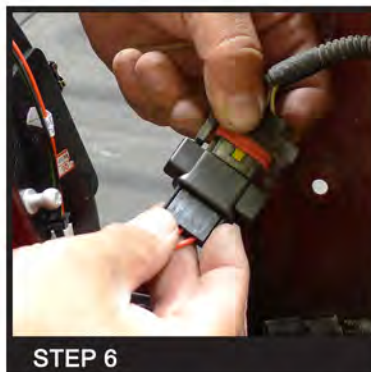
STEP 4

Disconnect harness from tail light



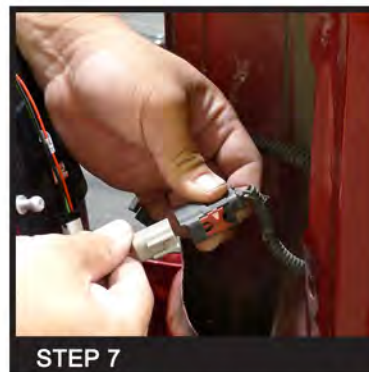
STEP 5

Disconnect harness from tail light



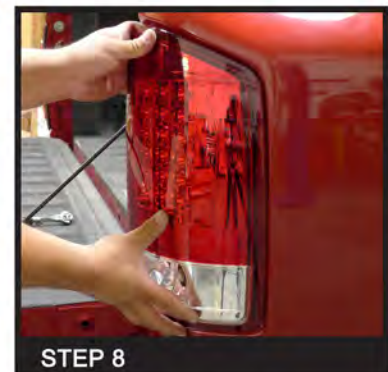
STEP 6

Connect harness to the Spec-D tail light



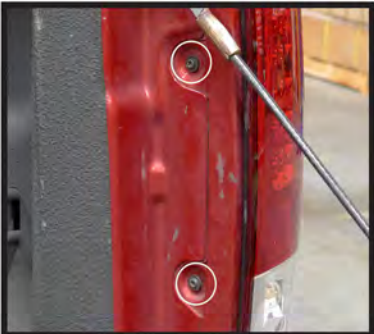
STEP 7

Connect harness to the Spec-D tail light



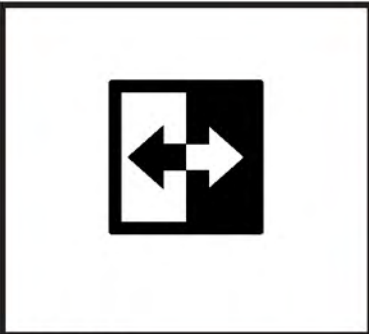
STEP 8

Install LED Tail light housing



STEP 9

Tighten two ST25 screws



STEP 10

Repeat steps 2-9 for other side



STEP 11

Close tailgate



STEP 12

The installation is now complete