

MANUAL

CONTENTS:

Page	1	Specifications
	2	Warning Information
	3	Setup, Operating and Maintenance
	4	Exploded View Drawing and Replacement Parts
	5	Warranty Information



SPECIFICATIONS

Low Height	19.45"
Raised Height	14.57"
Overall Length	63"
Overall Width	18.375"
Wheel Diameter	8"
Shipping Weight	62 Lbs.

WARNING INFORMATION



This is the safety alert symbol. It is used to alert you to potential personal injury hazards. Obey all safety messages that follow this symbol to avoid possible injury or death.



WARNING: Indicates a hazardous situation which, if not avoided, could result in death or serious injury.



IMPORTANT: READ THESE INSTRUCTIONS BEFORE OPERATING

BEFORE USING THIS DEVICE, READ THIS MANUAL COMPLETELY AND THOROUGHLY, UNDERSTAND ITS OPERATING PROCEDURES, SAFETY WARNINGS AND MAINTENANCE REQUIREMENTS.

It is the responsibility of the owner to make sure all personnel read this manual prior to using the device. It is also the responsibility of the device owner to keep this manual intact and in a convenient location for all to see and read. If the manual or product labels are lost or not legible, contact Sunex for replacements. If the operator is not fluent in English, the product and safety instructions shall be read to and discussed with the operator in the operator's native language by the purchaser/owner or his designee, making sure that the operator comprehends its contents.

THE NATURE OF HAZARDOUS SITUATIONS



The use of a brake drum handler is subject to certain hazards that cannot be prevented by mechanical means, but only by the exercise of intelligence, care, and common sense. It is therefore essential to have owners and personnel involved in the use and operation of handlers who are careful, competent, trained, and qualified in the safe operation of the equipment and its proper use. Examples of hazards are dropping, tipping or slipping of loads caused primarily by improperly securing loads, overloading, off centered loads, use on other than hard level surfaces, and using equipment for a purpose for which it was not designed.

METHODS TO AVOID HAZARDOUS SITUATIONS



- Read, study, understand and follow all instructions before operating this brake drum handler.
- Inspect the handler before each use. Do not use if damaged, altered, modified, in poor condition, leaking air, or unstable due to loose or missing hardware or parts. Make corrections before using.
- Consult the vehicle manufacturer for the proper method of lifting and supporting the vehicle in preparation for removal and installation of brake drums.
- Wear eye protection that meets ANSI Z87.1 and OSHA standards.
- Wear steel-toed shoes.
- Do not use this handler for any purpose other than for which it was intended or in a manner inconsistent with any instructions regarding its use.
- Make sure the setup is stable and secure before removal, installation or transportation by using only the restraints provided on the handler.
- Be careful of pinch points.
- Do not alter or modify this handler.
- Failure to heed these markings may result in serious or fatal personal injury and /or property damage.

CONSEQUENCES OF NOT AVOIDING HAZARDOUS SITUATIONS



Failure to read this manual completely and thoroughly, failure to understand its OPERATING INSTRUCTIONS, SAFETY WARNINGS, MAINTENANCE INSTRUCTIONS and comply with them, and failure to comply with the METHODS TO AVOID HAZARDOUS SITUATIONS could cause accidents resulting in serious or fatal personal injury and/or property damage.

SETUP

1. Insert the handler in the carriage receiver according to the exploded view drawing and secure it with the detent pin provided.
2. Secure the angled bars to the carriage in accordance with exploded view drawing and with the bolts and nuts provided.

OPERATING INSTRUCTIONS



This is the safety alert symbol used for the OPERATING INSTRUCTIONS section of this manual to alert you to potential personal injury hazards. Obey all instructions to avoid possible injury or death.

REMOVING THE BRAKE DRUM

1. Consult the vehicle manufacturer for the proper brake drum removal instructions. Make sure the vehicle tires/wheels not being removed are blocked and the vehicle is secured to prevent it from rolling.
2. Back the brakes off and break the drum loose from the hub assembly.
3. Grab the handler's handle with one hand and put it in a horizontal position while using the other hand to turn the handler's machine rotating handle in clockwise direction. Turn the machine rotating handle until the handler's cradle is all the way down.
4. Flip the "L" shaped grab hook back against the handle. Push the handler under the drum until the two angled bars on the handler touch the outside surface of the drum.
5. Turn the machine rotating handle in a counterclockwise direction until the handler's cradle comes in contact with the bottom circumference of the drum.
6. Lower the handler's handle to lift the drum just enough so that you can back the drum away from the brake assembly. This will enable you to flip the "L" shaped grab hook forward so that it fits into the opening of the drum. If the "L" shaped grab hook does not enter the drum's opening, remove the grab hook's detent pin and reposition the grab hook in the appropriate hole in the cradle bracket and secure it with the detent pin provided. The drum should now be secured to the handle as the two angled bars prevent the drum from moving backwards and the "L" shaped grab hook prevents the drum from moving forward.
7. Pull the drum away from the brake assembly until it clears the assembly. Transport the drum to its destination and then slowly lift the handle to place the open end of the drum on the floor.

INSTALLING THE BRAKE DRUM

1. Turn the handler's machine rotating handle in a clockwise direction until the handler's cradle is all the way down.
2. Roll the handler over to the drum and raise the handle in a upright position so the handler's cradle rests against the side of the drum and the two angle bars are resting on the outer face of the drum. Flip the "L" shaped grab hook forward so it fits into the opening of the drum. Adjust the hook location if necessary.
3. Pull the handle back to slowly lift the drum off the floor and transport the drum to the brake assembly.
4. Lower the handle and turn the machine rotating handle in a counterclockwise direction to raise the drum for alignment with the brake assembly. Push the handler in towards the brake assembly until the drum is close to touching the studs. Make sure the studs line up with the drum holes but remember to flip the "L" shaped grab hook back and out of the way before installing the hub on the brake assembly.
5. Consult the vehicle manufacturer for the proper brake drum installation instructions.
6. Once the drum is positioned and seated on the brake assembly, pull the handle up and remove the handler.

PREVENTATIVE MAINTENANCE



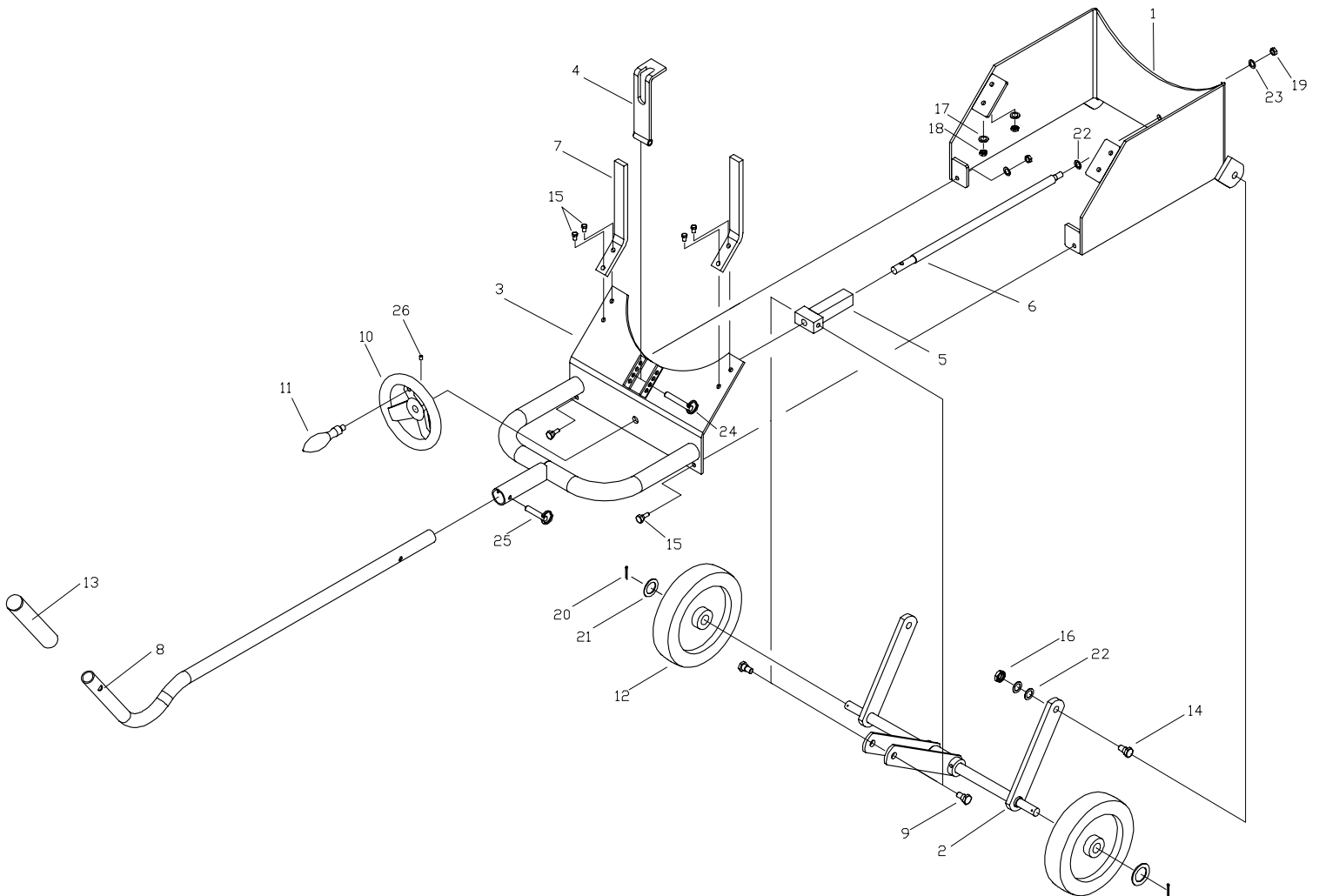
This is the safety alert symbol used for the PREVENTATIVE MAINTENANCE section of this manual to alert you to potential personal injury hazards. Obey all instructions to avoid possible injury or death.

1. Always store the handler in a well protected area where it will not be exposed to inclement weather, corrosive vapors, abrasive dust, or any other harmful elements. The ramps must be cleaned of water, snow, sand or grit before using.
2. Lubricate moving parts and specifically the drive screw once a month with a general purpose grease. Do not lubricate the cradle, machine rotating handle and main handle.
3. Every drum handler owner is responsible for keeping the label clean and readable. Use mild soap solution to wash surfaces and then dry.
4. Inspect the handler before each use. Do not use the handler if any component is cracked, broken, bent or shows sign of damage. Do not use the handler if it has loose or missing hardware or components or is modified in any way. Take corrective action before using the handler again.

SUNEX[®]HD

MODEL 1330
CAPACITY: 15" AND 16.5"
BRAKE DRUM HANDLER

PARTS LIST AND DRAWING



Ref. #	Item #	DESCRIPTION	QTY	Ref. #	Item #	DESCRIPTION	QTY
1		Carriage frame assembly	1	14	*	Bolt	2
2		Axle assembly	1	15	*	Bolt	2
3		Carriage and plate assembly	1	16	*	Lock nut	2
4	RS133004	Adjustable angle bracket assembly (incl. #4, #24)	1	17	*	6 washer	6
5		Trunion assembly	1	18	*	Lock nut	6
6		Drive screw	1	19	*	Lock nut	1
7	RS133007	Stop bar/each (incl. #7, (2) #15)	2	20	*	4 cotter pin	2
8	RS133008	Handle (incl. #8, #13)	1	21	*	16 washer	2
9	*	Trunion screw	2	22	*	12 washer	5
10		Flywheel	1	23	*	10 washer	1
11	RS133011	Flywheel handle	1	24	*	Cotterless pin	1
12	RS133012	Wheel/each (incl. #12, #20, #21)	2	25	*	Cotterless hitch pin	1
13		Handle grip	1	26	*	Expansion pin	2
						RS1330LK Set of Product Labels (not shown)	1

*Asterisked items are only available in bolt kit, RS1330BK.

Only reference numbers identified by item numbers are available separately.