

SWEET Mfg. INC

"LET US TURN YOUR WHEELS"



Quality Manufacturing Since 1978

Randy Sweet



Sweet Manufacturing was built on the knowledge and performance of Randy Sweet's over 50 years of racing. Randy has driven and won in multiple different divisions and cars that range from Super Modified to Sprint Cars and many more.

One of Randy's greatest accomplishments came in 1984 when he built a 2200 lb stock car that featured many of his early products and innovations. The "Rocket" car broke track records all over the country and continues to hold several. The "Rocket" car can now be seen on display in Speedy Bill's Museum of Speed in Lincoln, Nebraska

Randy's winning background and experience is what allows all of us at Sweet Manufacturing to proudly say that our products are built from experience and proven by performance.





Integrated Rack and Pinion

PART NO.

005-93345-235

**RACK
PREFIX**

005- 93 3 4 5 -.235
(1) (2) (3) (4) (5)

RACK SPEED (1)

30 = 1 7/8"
40 = 2"
50 = 2-1/4"
60 = 2-1/2"
80 = 3"
90 = 3-1/4"
91 = 3-1/2"
92 = 3-3/4"
93 = 4"
94 = 4-1/4"
95 = 4-1/2"

CENTER DISTANCE (2)

1 = 16-1/2"
2 = 17-1/4"
3 = 18-1/4"
5 = SPECIAL ORDER
6 = 19-1/4"
7 = 19-3/4"
8 = 18/19-1/4"

POWER ASSIST (3)
1 = MANUAL
4 = DUAL POWER
5 = XL DUAL POWER

SERVO (5)

.185 - XX LIGHT
.200 - X LIGHT
.210 - LIGHT
.220 - LIGHT
.235 - MED. LIGHT
.250 - MEDIUM
.265 - MEDIUM HEAVY
.275 - HEAVY
.300 - STIFF

RACK ENDS (4)

2 = ON CENTER (5/8" - 18 THREADED STUD)
3 = ROD END EYE (5/8" - 18 THREADED HOLE)
4 = ON CENTER ROD END EYE
5 = STD. SLOTTED EYE
6 = UPSIDE DOWN SLOTTED EYE
7 = DUAL HOLE ROD END EYE (ROCKET)
8 = R/H ON CENTER ROD END - L/H ROD END EYE
11 = R/H SLOTTED DOWN - L/H SLOTTED UP

Integrated Rack and Pinions are available in 11 different ratios with several different rack ends, center distances, and servos. Sweet Manufacturing has been providing the smoothest and most reliable rack and pinions in the racing industry for 30 plus years. Randy Sweet was the first to provide the racer with a rack that could endure the loads at race tracks such as Winchester (IN) and Eldora (OH). Every Rack and Pinion is produced and assembled entirely in Kalamazoo, MI by the professionals at Sweet Manufacturing.



Sprint Box



PART NUMBER

310- 40 1 30 -235
(1) (2) (3) (4) (5)

BOX TYPE(1)	OUTPUT SHAFT(2)	GEAR TYPE(3)	INPUT HEIGHT(4)	VALVE(5)
306=HALF BOX	30=14"	1=DIRT	10=SHORT	.220 = LIGHT
307=FULL BOX	40=16"	2=ASPHALT	30= MEDIUM	.225 = LIGHT/MED
310 L/W HALF BOX (BLACK)	50=18"		50=LONG	.235 = MED/LIGHT
318=L/W FULL BOX (BLACK)				.250 = MEDIUM
				.275 = HEAVY

Sweet Manufacturing started with a clean sheet of paper and designed the lightest and most durable Sprint Gear on the market. Made from a compact 4140 Chro-Moly housing and 7075 billet side bells, with gundrilled pitman shafts that are made from the finest of material. All of this make the gear weigh a mere 24 pounds and with the lightweight upgrade it is taken down to a industry low of 22 pounds.



Sprint Combination Assembly



306-20300 - Sprint Car Combination Assembly w/ 300 Gear

306-20400 - Sprint Car Combination Assembly w/ 400 Gear

306-20500 - Sprint Car Combination Assembly w/ 500 Gear

These assemblies include everything that is needed to mount both the fuel and Power Steering pump in the smallest and lightest design on the market. Unlike other combination assemblies our design of Power Steering Pump will not "stall" in the corners or pits and maintains consistent flow regardless of fluid temp or RPM. The newly designed fuel pump doesn't require a clamp and is nearly two inches shorter than current models.

308-20200 - 300 Gear Sprint Fuel Pump

308-20400 - 400 Gear Sprint Fuel Pump

308-20500 - 500 Gear Sprint Fuel Pump



305-85835 - Sweet Aluminum Rear Drive Pump



301-61004 - Heat resistant Phenolic spacer



301-61002 - Adapter Plate for Sweet Combination Pump

Sweet Midget Rack

NEW



005-934615 - 4" Midget Rack

005-944615 - 4-1/4" Midget Rack

005-954615 - 4-1/2" Midget Rack

Using the knowledge of Brian Allegreso and Randy Sweet , Sweet Mfg produced a Rack and Pinion that has the ability to clamp to a solid front axle and eliminate the sometimes bulky and heavy steering system that is associated with Midgets and Asphalt Sprints. The center distance is 14" and many different size Rod Ends can be used.

Sweet Mini Rack

The Mini Rack and Pinion has three different ratios, from 2-3/4" of travel per Pinion revolution to 5-1/4" of travel per Pinion revolution.

The center distance is 11-3/8" and the rack is mounted with 3/8" bolts.

033-27114 - 2-3/4" Mini Rack and Pinion

033-47114 - 4-1/4" Mini Rack and Pinion

033-52114 - 5-1/4" Mini Rack and Pinion



Rack and Pinion Components



Rack Shafts

- 001-21011 - 16-7/16" Rack Shaft
- 001-21012 - 14-1/16" Rack Shaft
- 001-21013 - 14-5/8" Rack Shaft
- 001-21014 - 15-7/8" Rack Shaft
- 001-21017 - 16-7/8" Rack Shaft
- 001-21018 - 17-7/16" Rack Shaft
- 001-51012 - 15-7/8" Angle Cut Rack Shaft



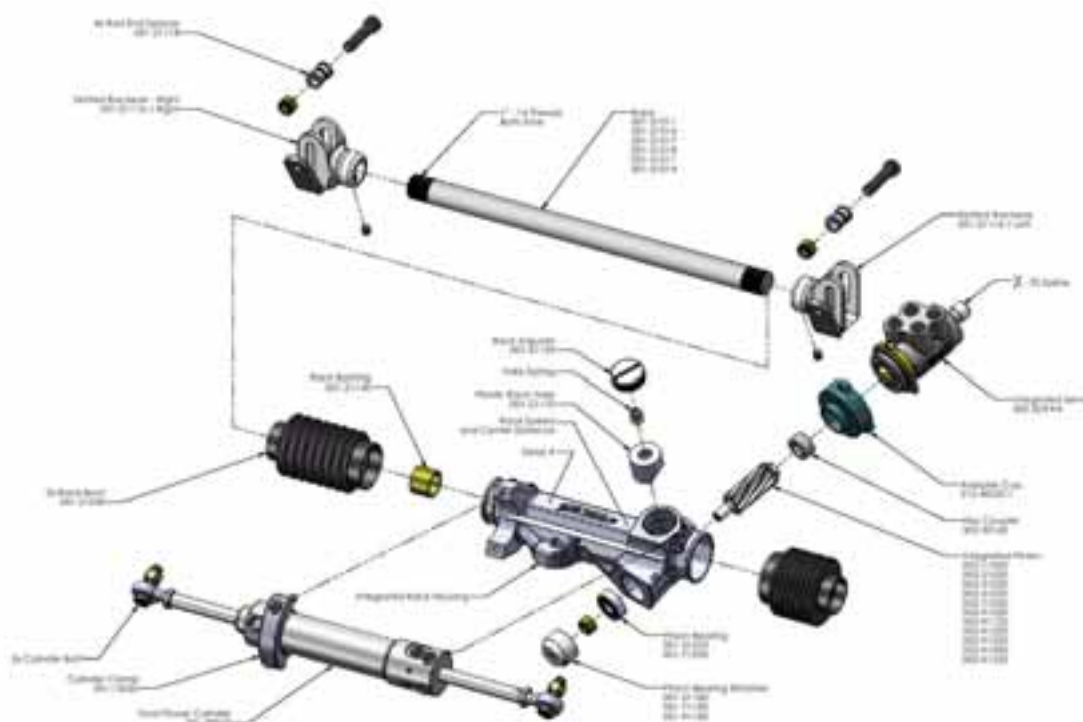
001-21502

Rebuild Kits & Parts

- 001-21501 - Rebuild Kit for 2-1/4" Rack
- 001-21502 - Rebuild Kit for 2" Rack
- 001-21503 - Rebuild Kit for 2-1/2" Rack
- 001-21507 - Rebuild Kit for 3" Rack
- 001-21509 - Rebuild Kit for 3-1/4" Rack
- 001-21040 - Rack Boot
- 001-21170 - Yoke and Spring
- 001-21050 - Pinion Bearing (1-7/8", 2", 2-1/2")
- 001-71050 - Pinion Bearing (3" - 4-1/2")



001-21170



Power Steering Tanks

- 301-30050 5" Tank and Bracket
- 301-30051 5" Tank Only
- 301-30071 7" Tank and Bracket
- 301-30072 7" Tank only
- 301-30077 5" Pressurized Tank only
- 301-30078 7" Pressurized Tank and Bracket
- 301-30079 7" Pressurized Tank only
- 301-30094 Standard Tank Cap
- 301-30099 Pressurized Tank Cap



301-30079



301-30050

The Power Steering Tank is a very important but often overlooked part of a proper Power Steering System. Always be sure to mount your tank as close to the pump as possible and above the feed fitting. The pressurized tank uses pressurized air to force the fluid to the pump, preventing starvation and cavitation.

Tank Brackets

301-30052



- 301-30052 Steel Clamp On Bracket
- 301-30053 Steel Bolt on Bracket
- 301-30088 1-3/4" Aluminum Clamp On Bracket
- 301-30089 1-1/2" Aluminum Clamp On Bracket

301-30088



301-30430

Power Steering Coolers

- 301-30420 Single Cooler Kit
- 301-30430 Dual Cooler Kit

Everything works well until it gets hot, Power Steering isn't any different. These coolers are designed specifically for the demands of racing and will significantly decrease the temperature of your fluid.

Power Assist Cylinders

- 301-30061 Std. Cylinder (16-1/2" eye to eye) 12" stroke
- 301-30062 Mini Cylinder (11-1/4" eye to eye) 7" stroke
- 301-30063 Dual Power Cylinder (1-1/4" Bore)
- 302-32063 Dual Power Cylinder (1-3/8" Bore)
- 302-33063 Dual Power Cylinder (1-1/2" Bore)



Pump Brackets and Components

Oil Pump Adapters



325-30040

325-30040 Oil pump to Sweet Aluminum Rear Drive Pump
(Does Not Fit Peterson R-4)

325-30055 Peterson R-4 to Sweet Aluminum Rear Drive Pump

325-30057 Oil Pump to Power Steering Pump Adapter

325-30058 Stock Car Products Oil Pump Adapter

325-30059 Phenolic Spacer

325-30060 3/8-24 Threaded Female Hex

Power Steering Pump Brackets

325-30030



325-30030 Small Block Chevy Head Mount

325-30031 Big Block Chevy Head Mount

325-30034 Small Block Chevy Block Mount

325-30041 Bert / Brinn Bell Housing Mount

325-30035 Replacement T-Nut

325-30036 Bracket to Head Bolt Kit

325-30037 Pump to Bracket Bolt Kit

325-30039 Bracket to Block Bolt Kit

325-30041



Rear Mount Pump Brackets & Hardware



301-30022

501-30022-1 Left Hand Quick Change Mount Kit

501-30022 Right Hand Quick Change Mount Kit

501-30023 Right Hand Cast Bracket

501-30028 Left Hand Cast Bracket

501-30026 Quick Change Mount Bolt Kit

501-30027 10-Spline Quick Change Yoke and Pulley

501-30037 32-Spline Quick Change Yoke and Pulley

501-30046 9" Ford Yoke and Pulley



301-30046





Head Mount Combination Assembly

Legal for 



Complete Assembly Part #**305-85890**
includes each of the following:

305-85900 - Combination Pump for Head Mount

Sweet Mfg Power Steering Pump with a Randy Sweet designed Waterman Fuel Pump. The Power Steering Pump comes with a 33 tooth HTD Pulley and features a unique Banjo style feed fitting to help make plumbing easy. The fuel pump can be used with both alcohol and gasoline.



301-30610 - Head Mount for Combination Pump

This Aluminum bracket is specifically designed to be mounted with the Combination Pump to the right sidehead on a small block Chevy.



301-30048 - 800mm HTD Belt

Uses 800mm long, 20mm wide HTD to connect to the mandrel that drives your Combination Pump



308-10300 - Dual Adjustable Fuel Regulator

A dual adjustable two port fuel regulator from the leader in fuel regulators. The unique design allows you to adjust both idle pressure and high speed pressure for better throttle response. This regulator doesn't require any jets, pills or barrel valves.



PUMP KITS



305-80845

- 305-60345 Aluminum Pump, 5" Tank and Mount with SBC Head Mount
- 305-60349 Aluminum Pump, 5" Tank and Mount with SBC Block Mount
- 305-70345 Steel Pump, 5" Tank and Mount with SBC Head Mount
- 305-70349 Steel Pump, 5" Tank and Mount with SBC Block Mount
- 305-80845 Sweet Aluminum Pump, 5" Tank and Mount with SBC Head Mount
- 305-80849 Sweet Aluminum Pump, 5" Tank and Mount with SBC Block Mount



Sweet Mfg Power Steering & Mechanical Fuel Pump Assembly

Assembly requires:

- 305-85839 Sweet Aluminum Pump w/ HTD 33 Tooth Pulley
- 308-10100 SBC Mechanical Fuel Pump Drive w/ Clamp
- 325-30044 Bellhousing Pump Mount
- 325-30059 Phenolic Spacer



Power Steering Pump w/ Fuel Pump Adapter



- 305-85834 Sweet Aluminum 1700 PSI Pump w/ Fuel Drive
- 325-30042 Fuel Pump Adapter w/ Bolts
- 325-30043 Heat resistant Phenolic Spacer



Power Steering Fluid

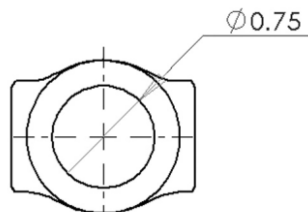
- 301-30090 Quart of Sweet Mfg. fluid
- 301-30091 Case (12 quarts) Sweet Mfg. fluid
- 301-30182 Quart of Sweet Gold fluid
- 301-30183 Case (12 quarts) Sweet Gold fluid

Sweet Manufacturing now offers two types of Power Steering Fluid. Sweet Mfg. fluid is suitable for most conditions and has been used for many years, however when the steering is under extreme load the use of our new Sweet Gold Fluid is required.

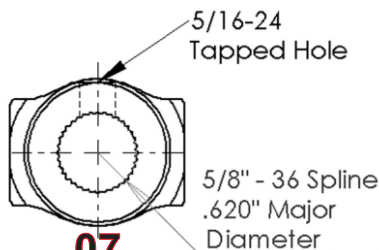
Universal Yokes Available



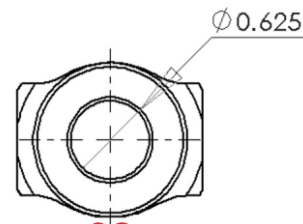
401-91519



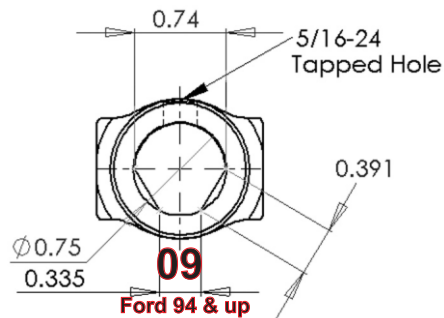
06
3/4" Smooth Bore



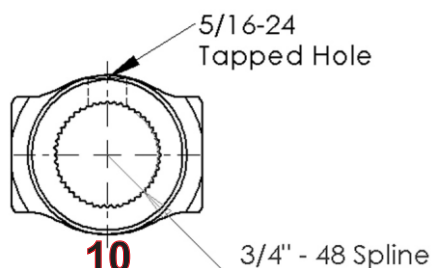
07
5/8" -36 Spline
Mini Rack / Stiletto Rack



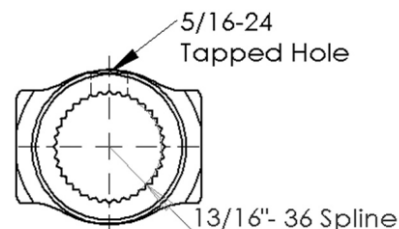
08
5/8" Smooth Bore



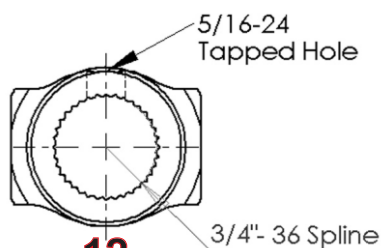
09
Ford 94 & up



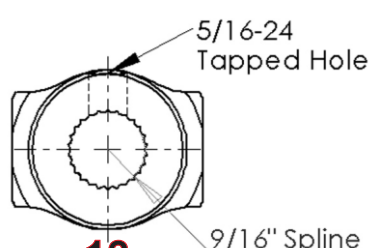
10
3/4"-48 Spline
Sweet Spline



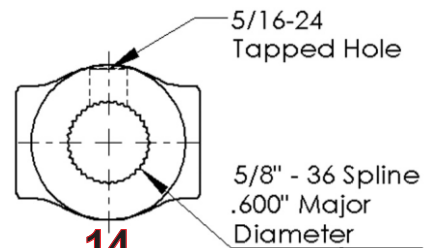
11
13/16 -36 Spline
Chevy Power



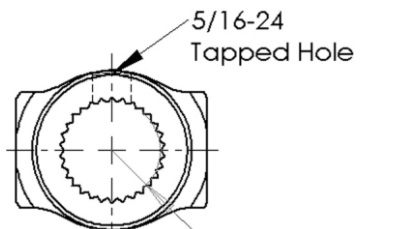
12
3/4 -36 Spline
Pinto Power
Steering Quickener



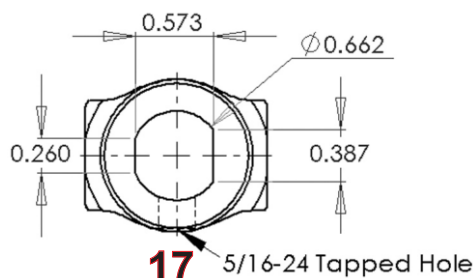
13
9/16" -26 Spline
Pinto Manual



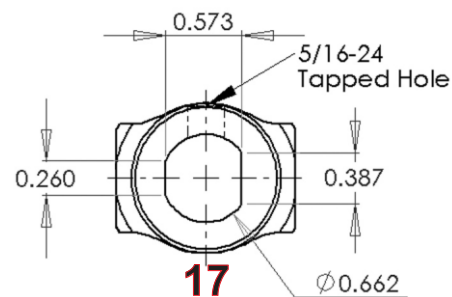
14
5/8 -36 Spline
Vega



15
3/4" -30 Spline
New Chevy Power
Sweet Int. Rack



17
5/16-24 Tapped Hole
Corvette Bottom Set Screw



17
Corvette Top Set Screw

Splined Couplers



301-30100

- 301-30100 Sweet Pline 3/4"-48
- 301-30110 Chevy Power 13/16-36 Spline
- 301-30120 Chevy Manual / Steering Quickner 3/4"-36 Spline
- 301-30130 Pinto Manual 9/16-26 Spline
- 301-30140 Vega 5/8-36 Spline (.600 Major Dia.)
- 301-30141 Mini Sprint 5/8-36 Spline
- 301-30150 Sweet Int. Rack / New Chevy Power 3/4"-30 Spline
- 301-30160 Sweet Adj. Steering Couolumn 3/4"-20 Spline

Steering Shaft Supports



405-10405



901-50009

- 405-10405 3/4" Lightweight Firewall Support Bearing
- 405-50003 3/4" Firewall Flange Bearing
- 901-50009 3/4" Oversized Rod End w/ Jam Nuts
- 405-10369 1-1/8" Alum. Support Bearing
- 405-10373 1-1/8" Alum. Pinch Collars (Pair)



405-10373



405-10369

Steering Shaft

- 006-52175 24" DD Steering Shaft (3/4")
- 006-52177 36" DD Steering Shaft (3/4")
- 405-50367 36" 3/4" D.O.M. w/ 3/4-48 Spline
- 405-50369 36" 3/4" D.O.M. w/ 3/4-48 Spline both ends
- 405-10429 31" 1-1/8" .065 w/ 1"-48 Spline both ends
- 405-10427 29" 1-1/8" .065 w/ 1"-48 Spline both ends
- *Custom steering shafts can be made to any length*



3/4" -48 Spline



405-10100 Lower Adjustable Steering Shaft

Mounting Brackets



- 405-10210 4-3/8" Dash Bracket
- 405-10215 6-3/8" Dash Bracket
- 405-10220 9-3/8" Dash Bracket
- 405-10230 1-3/4" to 1-1/2" reducers
- 405-10240 3/4" Mono Ball Steering Shaft Collar
- 405-10243 1-1/8" Mono Ball Steering Shaft Collar

405-10240



Lightweight Adjustable Steering Columns



405-10310

405-10310 Std. Adj. Column
405-10315 GRT Adj. Column
405-10316 Shaw / Swartz Adj. Column
405-10317 Rocket Adj. Column
405-10325 Rayburn Adj. Column



405-10315

Lightweight Adjustable Steering Columns come complete with an aluminum Quick Release and are available with either 1-1/8" Rod End Mounting or Monoball style. These columns are assembled and welded in Kalamazoo, MI using the best materials available.

405-10331 Std Adj. Column w/ Monoball Mount
405-10314 Shaw / Swartz Column w/ Monoball Mount
405-10326 Rayburn Column w/ Monoball Mount

Monoball Mounted Columns must use Dash Mounting Brackets

405-70035 Replacement Quick Release



801-70035



Steering Wheels

Sweet Manufacturing has been producing American made racing Steering Wheels for over 20 years. Our Steering wheels are made from 6061 Aluminum and feature a soft rubber grip. The wheels are offered in standard size (7/8" dia.) and large grip (1-1/16" dia). Both grip sizes are also offer in Flat and Dished centers, and also available without coating.

Standard Grip

601-70131 13" Flat Steering Wheel
601-70132 13" Dished Steering Wheel
601-70151 15" Flat Steering Wheel
601-70152 15" Dished Steering Wheel
601-70161 16" Flat Steering Wheel
601-70162 16" Dished Steering Wheel
601-70171 17" Flat Steering Wheel
601-70172 17" Dished Steering Wheel
611-70131 13" Flat Uncoated
611-70132 13" Dished Uncoated
611-70151 15" Flat Uncoated
611-70152 15" Dished Uncoated
611-70171 17" Flat Uncoated
611-70172 17" Dished Uncoated

Large Grip

601-60151 15" Large Grip Flat
601-80152 15" Large Grip Dished
601-80161 16" Large Grip Flat
601-80162 16" Large Grip Dished
601-80171 17" Large Grip Flat
601-80172 17" Large Grip Dished
611-80151 15" Flat Uncoated Large Grip
611-80152 15" Dished Uncoated Large Grip



Billet Pitman Arms

Offset Pitman Arms

201-28000- 0 Degree
201-28105- .5 Degree Left
201-28110- 1.0 Degree Left
201-28115- 1.5 Degree Left
201-28120- 2.0 Degree Left
201-28125- 2.5 Degree Left
201-28130- 3.0 Degree Left
201-28135- 3.5 Degree Left
201-28205- .5 Degree Right
201-28210- 1.0 Degree Right
201-28215- 1.5 Degree Right
201-28220- 2.0 Degree Right
201-28225- 2.5 Degree Right
201-28230- 3.0 Degree Right
201-28235- 3.5 Degree Right

201-28011 - 7/8" Nut
201-28013 - 7/8" Lock Washer

Straight Pitman Arms

201-29000- 0 Degree
201-29105- .5 Degree Left
201-29110- 1.0 Degree Left
201-29115- 1.5 Degree Left
201-29120- 2.0 Degree Left
201-29125- 2.5 Degree Left
201-29130- 3.0 Degree Left
201-29135- 3.5 Degree Left
201-29205- .5 Degree Right
201-29210- 1.0 Degree Right
201-29215- 1.5 Degree Right
201-29220- 2.0 Degree Right
201-29225- 2.5 Degree Right
201-29230- 3.0 Degree Right
201-29235- 3.5 Degree Right



STEERING BOX FITTINGS

201-28001 - 14mm x 1.5 w/ O-Ring Fitting
201-28002 - 16mm x 1.5 w/ O-Ring Fitting
201-28003 - 5/8"-18 Flare Fitting (Pre 1978)
201-28004 - 11/16"-18 Flare Fitting (Pre 1978)

Steering Box Seal Kits

201-28020 - Steering Box Seal Kit (700 Series)
201-28016 - Pitman Shaft Seal Kit (Old Style)
201-28017 - Pitman Shaft Seal Kit (New Style)



Miscellaneous



302-32100

- 301-30080 - Rack and Pinion Hose Kit
- 301-30081 - Steering Box Hose Kit
- 301-30082 - Rear Mount Hose Kit
- 301-30083 - Int. Rack w/ PTO Pump Hose Kit
- 301-30084 - Int. Rack w/ Standard Mount Hose Kit
- 302-32100 - Int. Rack Hose Kit



301-30083

Aluminum Brake Brackets clamp to a 3" Axle Tube and have bolts that are threaded into the tube to ensure strength.

- 501-60008 Standard Aluminum Brake w/ Caliper Bracket
- 501-60009 Dirt 1" Wide Aluminum Brake Bracket w/ Caliper Bracket



501-60009



- 901-10151 - Air Cleaner Knob
- 901-10150 - 4130 Chro-Moly Air Cleaner Stud (5/16-18)

901-10008 - Carburetor Hat

Cast from 100% virgin aluminum and fitted with an o-ring.



Fabricated Spindles

The combination of spindles is nearly endless, here are a few of our most popular and if you don't see what you are looking for please call.



701-120-123

Spindle Prefix

701

Spindle Number

120

Pin Style

1

Brake Bracket

2

Left or Right

3

8	East Coast Mod.	101
8	Sweet EC Mod	105
12	Ford	107
8	East Cost Mod	115
8	Dirt Late Model	118
10	Figure 8	119
10	Ford	120
10	Chevy	121
8	Pinto	122
5	Ford	141
5	Chevy	148
7	Ford	150
7	Chevy	157

1 = Wide 5
2= 5x5
4= GM Impala

0 = East Coast
1 = GM
2 = Superlite (11-3/4 Rotor)
3 = Dynalite
5 = Superlite (12-3/16 Rotor)
6 = No Brake

1 = Left
2 = Right
3 = Left adj.
4 = Right adj.



Wing Valve This revolutionary new wing valve gets its power directly from the powering steering pump, this provides maximum pressure to the wing cylinder.

Use -06 Aeroquip Teflon racing hose from the pump to the wing valve maximum operating pressure of 2,500 psi

Use -03 Aeroquip Teflon racing hose from wing valve to wing cylinder maximum operating pressure of 3,000 psi

Do not use a T from the pump to the wing valve

Wing valve travel 3 per second. **DO NOT BUMP HANDLE FOR MORE THAN 1/2 SECOND, HOLDING THE HANDLE WILL LEAD TO FAILURE, IF YOU GET GREEDY YOU WILL BE NEEDY!!!**

Wing Cylinder This cylinder was specifically designed for sprint car wing adjustment with maximum pressure of 1,700 psi. It features a 8 1/2, 10, or 12 stroke and is made in the U.S.A. with the finest materials

Check your wing travel and adjust cylinder stroke w/ locking collar. **DO NOT OVER EXTEND TRAVEL, THIS WILL LEAD TO FAILURE**

Current wing cylinders are an air cylinder designed for very low pressure. **DO NOT INTERCHANGE SWEET MFG. WING CYLINDER WITH CURRENT WING CYLINDER, THIS WILL LEAD TO FAILURE.**

DO NOT USE CURRENT WING CYLINDER W/ SWEET MFG. WING VALVE, THIS WILL LEAD TO FAILURE.

SPRINT STEERING PLUMBING DIAGRAM

