

21209
11-12 GMC
SIERRA HD



21209
11-12 GMC
SIERRA HD

2011-12 GMC SIERRA HD

Upper Class Billet Grille Insert/Overlay Bolt on

TOOLS REQUIRED:

Phillips Screwdriver
Drill & 6/32 Drill bit
Plastic Prybar

PARTS LIST

(2) 4.5 L-Brackets (5) Flatnuts
(5) 1.5 J-Hook Offsets (7) #8 Screw
(7) #8 U-nuts (5) #8 6head screw 1'
(1) Billet Grille

PLEASE READ AND UNDERSTAND ALL INSTRUCTIONS BEFORE ATTEMPTING INSTALLATION.

Step 1

Remove (10) clips from plastic cover. (Fig. 1)
Remove plastic cover.
Remove (4) 10mm bolts along the top of grille. (Fig. 2)

For overlay continue to step 10.

For insert continue to step 2.

Step 2

Grille is attached to bumper filler and requires removal to remove grille. Remove 2 10mm bolts from each side fender well. (Fig. 3)

Step 3

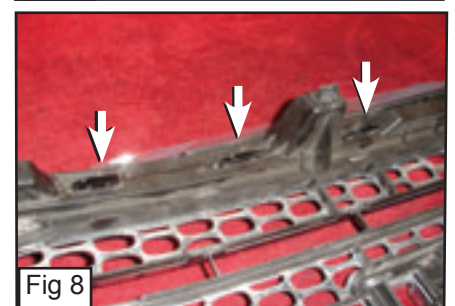
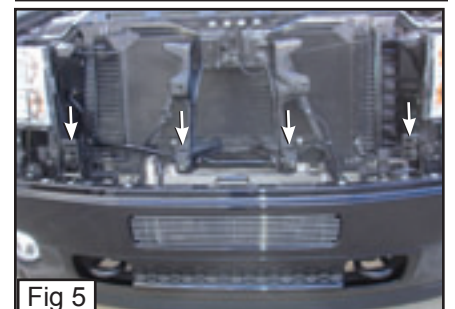
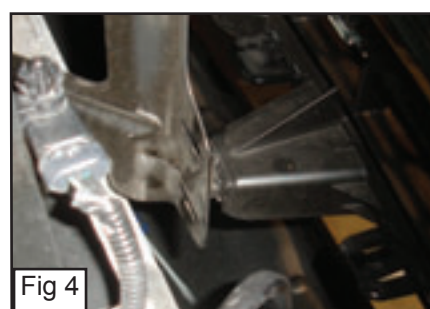
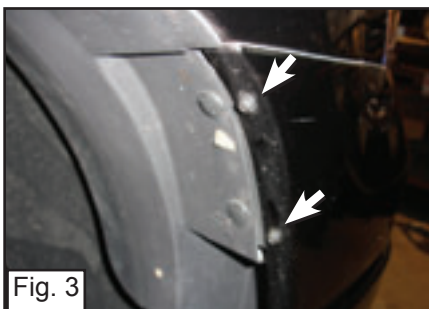
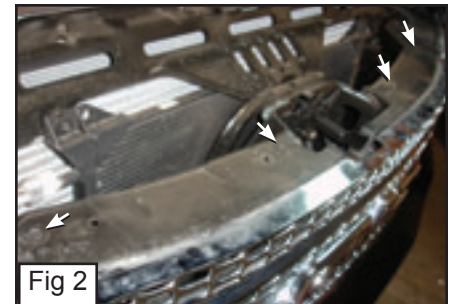
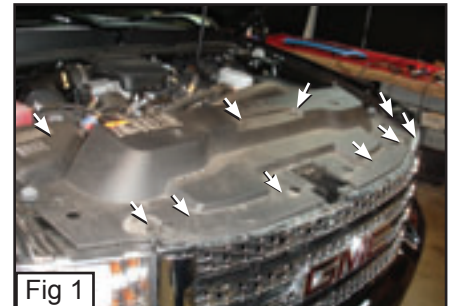
Unclip 4 clips that secure the factory grille. (Fig. 4 & 5)

Step 4

On each end, 3 molded clips secure bumper filler, Carefully pull the bumper outward to release clips. (Fig. 6)
Remove factory grille and bumper (grille and bumper are connected together). (Fig. 7)

Step 5

Unclip 4 clips from factory grille to separate the grille shell from the bumper filler. (Fig. 8)



GMC SIERRA HD Upper Class Billet Grille Insert

Step 6

Mark along the inner edge on the 3 plastic bars on the factory grille shell. (Fig. 9 and 10)

With a Jigsaw, cut along the verticle and plastic bars that hold the factory grille in place. (Grind and cut excess material). (Fig. 11)

Do not remove the top horizontal mounting section used to secure the grill assembly with the (4) 10 mm bolts. (Fig. 12)

Step 7

Insert the (7) U-Nuts through the hole on the L-brackets and J-hooks. (Fig. 13) (See Fig. 1A and 1B on page 3.)

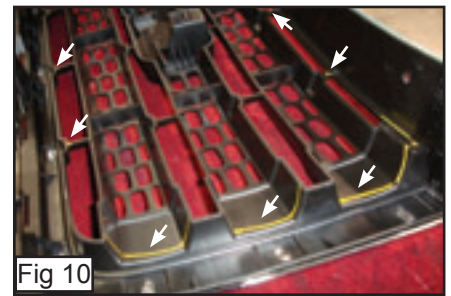
Step 8

With the 6/32 Nylon Locks, Install (2) 4.5 L-Brackets on the small square plates along the top of grille and Insert the factory shell on the billet grille. (Fig. 14)

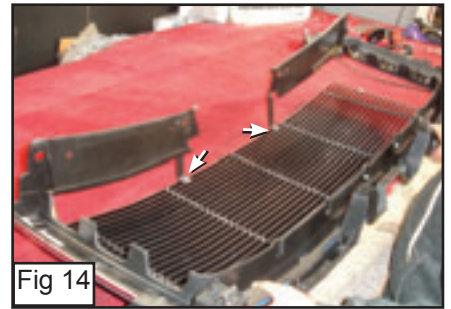
There will be small square plates 1/2 x 1/2 with holes in the center welded to the backside of the billet grille, on these holes place a J-Hook to latch onto the factory grille shell and thread a #8 screw in place, with a 6/32 drillbit, drill a hole where the center hole on the J-Hook is. (Fig. 15 & 16)

Step 9

Insert a #8 6Head 1' Screw through the center hole on the J-Hook and thread it in place. (Repeat for remaining J-Hooks.) (Fig. 17)
Re-Assemble bumper, plastic cover, nuts and clips.



Installation Complete.



GMC SIERRA HD

Upper Class Billet Grille Insert

Overlay Instructions

Step 10

On the GMC logo, there will be 7 clips, Unclip these 7 with a plastic prybar. (Fig. 20)

Place billet grille onto the factory grille. (Fig. 21)

Step 11

Insert 1' #8 6 head screw into the small square plates welded on the billet grille. (Fig. 22)

Insert a U-nut through the hole on the J-hook. (have the barb on the U-nut go towards the grille.) (Fig. 1B), Thread the J-Hook onto each screw so it latches onto the plastic bar. (Fig. 23)

Step 12

Install (2) 4.5 L-Brackets onto the small square plates along the top of the overlay grille. (Fig. 24 & 1A)

Re-Install the (4) center 10mm Bolts through the (2) 4.5 L-Brackets along the top of grille.

Re-Assemble the plastic cover.

Installation Complete

