

51936 54936
2011 TOYOTA
TACOMA



51936 54936
2011 TOYOTA
TACOMA

2011 TOYOTA TACOMA Upper Class Grille

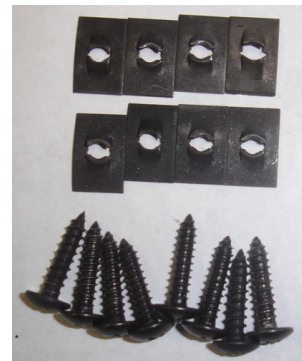
TOOLS REQUIRED:

Phillips Screwdriver
Flat Head Screwdriver
Socket & Ratchet Set
Jigsaw/Grinder
Vise Grips
Drill & Bits

PARTS LIST

(8) #8x3/4" Screws
(8) #8 Nut Plates
(1) Main Grille

PLEASE READ AND UNDERSTAND ALL INSTRUCTIONS BEFORE INSTALLATION. Auto makers offer varied models to each vehicle and occasionally manufacture more than one body style of the same model.



Step 1 Factory Grille Removal

Open the hood and remove the bolts and plastic pop clips along the top of the factory grille shell (Fig 1). Now reach behind the factory grille and unlatch the two latches on the lower back sides with your hands and remove the factory grille shell from the vehicle.

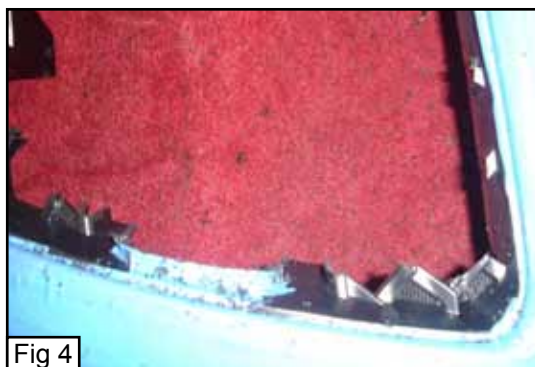


Step 2 Factory Grille Cutting

Place the grille shell on a workbench. Using a jigsaw cut the center out of the grille shell, make your cuts leaving a little material (Fig 2 & 3).



Use a grinding wheel or file to smooth down the areas where you cut out the center section (Fig 4 & 5).



Step 3 Mesh Grille Installation

Take the mesh grille and insert it into the cut out opening in the factory grille. Take some vise grips and clamp the mesh grille tabs to the lip on the factory grille shell to hold the mesh grille secure during installation (Fig 6). Now drill a 1/4 hole through the hole in the tab and the plastic lip on the factory grille shell (Fig 7). Take the eight screws and insert them through the holes in the tabs, the heads of the eight screws will be on the inside of the grille opening, and place the nut plates on the end of the screws, tighten (Fig 8). Reinstall the grille onto the vehicle. Installation complete.

