

AIR TANKS - New Product Additions

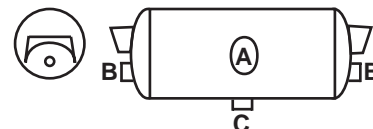
- A unique, automated painting process applies a corrosion-resistant paint to both the inside and outside surfaces, providing long-lasting rust protection
- Continuous weld seams ensure a sound and secure tank body
- Ports are resistance-welded for strength and leak protection
- Thread gauge – L1
- Every tank is pressure tested for leak resistance, structural integrity and safety
- Each tank is date-coded for traceability
- Air tanks meet SAE J10 and FMVSS DOT 121 for use in Heavy Duty Air Brake systems
- Maximum working pressure: 150 psi

Contact customer service for custom tank configurations, minimum order quantities may apply

Type 1

Part No.	Stk Code	Port A	Port B (2)	Port C	Port D	Port E (2)	Volume Cu. In.	Length	O.D.
2001V	11302	3/4"	1/2"	1/4"	-	-	1488	27 1/2"	9 1/2"
2000Q*	11307	3/4"	1/2"	1/4"	-	-	1425	29 1/4"	8"

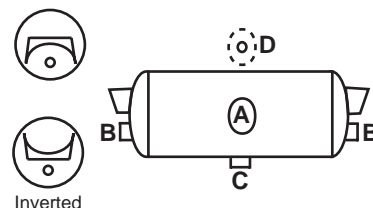
* No Bracket



Type 2

Part No.	Stk Code	Port A	Port B (2)	Port C	Port D	Port E (2)	Volume Cu. In.	Length	O.D.
2001Q	11298	1/2"	3/8"	1/4"	1/2"	-	1488	27 1/2"	9 1/2"
Inverted Bracket									
2001QH	11297	1/2"	3/8"	1/4"	1/2"	-	1488	27 1/2"	9 1/2"
2002FH	11294	3/4"	3/8"	1/4"	1/2"	-	2850	29 1/2"	12"
2000TH	11296	3/4"	3/8"	1/4"	3/4"	-	1425	32"	8"

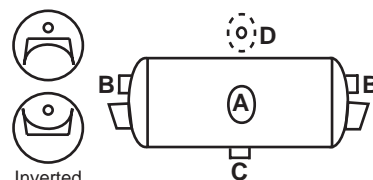
D Port located opposite A Port



Type 3

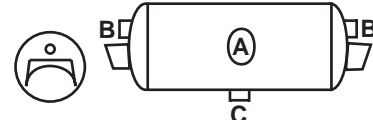
Part No.	Stk Code	Port A	Port B (2)	Port C	Port D	Port E (2)	Volume Cu. In.	Length	O.D.
2001L	11303	1/2"	1/2"	1/4"	1/2"	-	1488	27 1/2"	9 1/2"
Inverted Bracket									
2001LH-01	11293	1/2"	1/2"	1/4"	1/2"	-	1488	27 1/2"	9 1/2"
2002BH	11300	1/2"	3/8"	1/4"	1/2"	-	2850	29 1/2"	12"

D Port located opposite A Port



Type 4

Part No.	Stk Code	Port A	Port B (2)	Port C	Port D	Port E (2)	Volume Cu. In.	Length	O.D.
2001M	11299	1/2"	1/2"	1/4"	-	-	1488	27 1/2"	9 1/2"



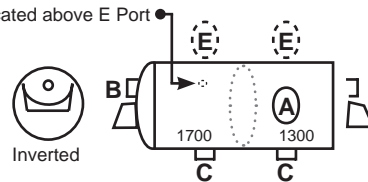
13.5 FT AIR & ELECTRICAL CONNECTION LINES & ACCESSORIES

Type 5 - Dual Compartment Tank

Part No.	Stk Code	Port A	Port B (2)	Port C (2)	Port D	Port E (2)	Volume Cu. In.	Length	O.D.
Inverted Bracket									
2004A	11306	1/2"	1/2"	1/4"	-	1/2"	1700/1300	31 1/2"	12"

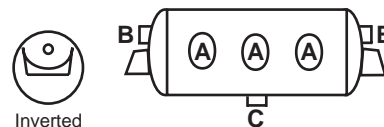
E Port located on back of tank

3/8" NPT located above E Port



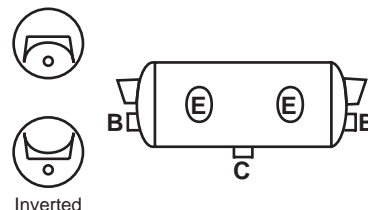
Type 6

Part No.	Stk Code	Port A (3)	Port B (2)	Port C	Port D	Port E (2)	Volume Cu. In.	Length	O.D.
Inverted Bracket									
2001U	11301	3/4"	3/8"	1/4"	-	-	1488	27 1/2"	9 1/2"



Type 7

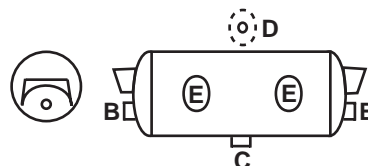
Part No.	Stk Code	Port A	Port B (2)	Port C	Port D	Port E (2)	Volume Cu. In.	Length	O.D.
2001I	11291	-	3/8"	1/4"	-	1/2"	1488	27 1/2"	9 1/2"
Inverted Bracket									
2001JH	11292	-	1/2"	1/4"	-	3/4"	1488	27 1/2"	9 1/2"
2002DH	11040	-	3/8"	1/4"	-	3/4"	2850	29 1/2"	12"
2002V	11305	-	3/8"	1/4"	-	3/4"	4400	43 3/8"	12"



Type 8

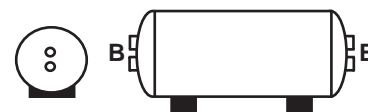
Part No.	Stk Code	Port A	Port B (2)	Port C	Port D	Port E (2)	Volume Cu. In.	Length	O.D.
2000D	11295	-	3/8"	1/4"	3/4"	3/4"	1425	32"	8"

D Port located on back of tank at mid-line



Type 10

Part No.	Stk Code	Port A	Port B (4)	Port C	Port D	Port E (2)	Volume Cu. In.	Length	O.D.
1998	11304	-	1/2"	-	-	-	800	22"	7"



Air Tank Mount Kits

Part No.	Stk Code	Description
1999BRK	11270	7" Tank Strap Mount Kit
2000BRK	11271	8" Tank Strap Mount Kit
2001BRK	11272	9 1/2" Tank Mount Kit
2002BRK	11273	12" Tank Mount Kit

REVERSIBLE MULTI-PORT AIR TANKS

TECTRAN® tanks are a solution when customers are looking for extra ports. Use the ports needed and plug off the rest.

Specifications

Main Ports total of 4: Front side 3 NPT **3/4"** ports

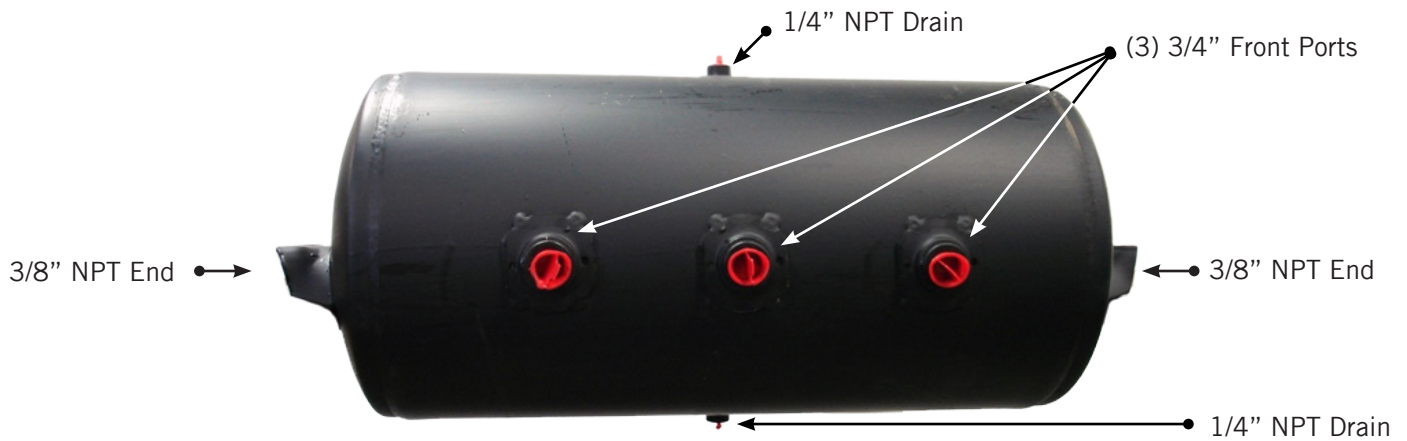
Back side 1 NPT **3/4"** port

Head Ports total of 2 : One each end NPT **3/8"**

Drain Ports total of 2: Top 1 NPT **1/4"**, Bottom 1 NPT **1/4"**

With drain **1/4"** drain ports top & bottom the tank can be installed with Handles up or down.

The tank is **REVERSIBLE** simply plug the drain port that is not needed.



Three NPT 3/4" ports on front side, with 1/4" drain ports top and bottom

Part No.	Diameter	Length	Volume Cu. In.	Mount
2000R	8"	32"	1425 in ³	Dual
2001R	9.5"	27.5"	1488 in ³	Dual
2002R	12"	29.5"	2850 in ³	Dual



Bottom view note three 3/4" ports front & one 3/4" port back side

Air tanks meet SAE J10 and FMVSS DOT 121 for use in heavy duty air brake systems.

