

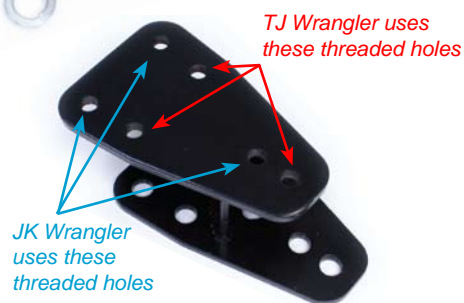
TERAFLEX

INSTALLATION GUIDE

TJ & JK Spare Tire Extension Bracket

TJ/JK Boxed-Part #1907200

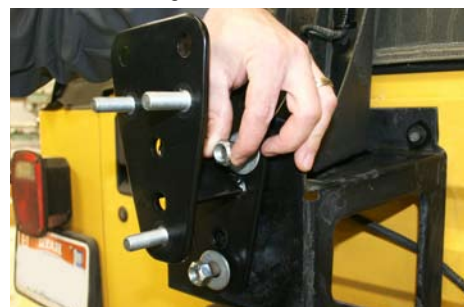
TJ/JK Skin Packed-Part #1907220



INSTRUCTIONS:

1. Remove factory spare tire. Keep the factory spare tire lug nuts for use on spare tire extension bracket.
2. Install the supplied bolts and lock washers into the spare tire extension bracket in the proper location (see photo at right to identify your vehicle and location).
3. Install the spare tire extension bracket on factory studs in tailgate bracket using the lock nuts and flat washers provided.
4. Tighten nuts to secure spare tire extension bracket in place.
5. Replace spare tire onto spare tire extension bracket studs, securing with original lug nuts.

TJ Wrangler install shown below



Kit Contents:

COMPONENT #	DESCRIPTION	QTY
907200	spare tire extension	1
37	1/2" flat washer	3
215	1/2"x20 stover lock nut	3
35	1/2" lock washer	3
237	1/2"x1.5" bolt	3

NOTE: This bracket is not recommended for tires larger than 33 inches. If larger tires are placed on the bracket, damage to the factory spare tire tailgate bracket, vehicle tailgate, and/or hinges will occur.

NOTE: Placing a larger tire on the rear of the vehicle may block the third brake light. It is the responsibility of the installer to ensure that the visibility of the third brake light remains unblocked.