

IRC515

Rear suspension package

Ref. = Reference

Part = Part #.

Qty. = Quantity

Ref	Part	Qty
1	F12104-153	4
2	K51402-003	2
3	A00200-65V00	2
4	F11103-150	4
5	F40052-020	8
6	F31005-150	4

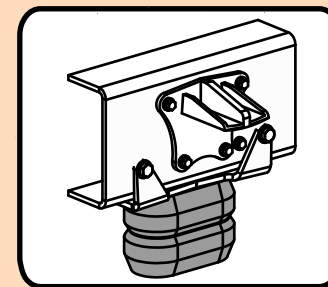
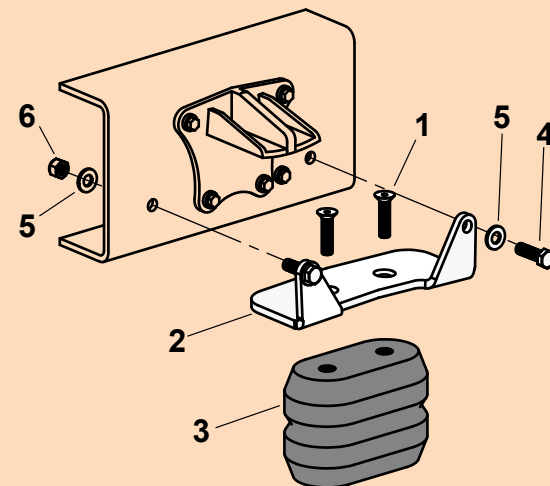
INSTALLATION INSTRUCTION

- Raise vehicle allowing the axle to hang freely.
- Assemble AEON rubber springs to Timbren supplied brackets.
- Using Timbren supplied bracket as template, drill two holes to be use to secure Timbren kit. Ensure AEON rubber spring is centered over axle.
- Secure Timbren kit using supplied fasteners.
- Lower vehicle.

NOTES:

Ensure that no wires or hoses will be damage during drilling of frame.

Do not exceed vehicle manufacturer's recommended axle weight rating. Check for AEON® interference with vehicle components - Under load AEON® will "expand" in diameter.



IRC515



IRCV515

PART NUMBER	DESCRIPTION	QTY	LOCATION
F31005-150	NYLOCK LOCKNUT 1/2 UNF GR 5 Z	4	G1D
F40052-020	WASHER FLAT USS 1/2 x 1-3/8 x 1/8 THK GR2 Z	8	G1D
F11103-150	HCS 1/2 - 20 x 1-3/4 UNF GR5 Z	4	G1D
F12104-153	FHSCS 1/2 - 20 x 2 UNF GR5 B	4	J2D
A00200-65V00	Hollow Rubber Spring	2	C17A
K51402-003	FORMED BRACKET	2	TBD
B90223	10-3/4 x 9-1/2 x 7 DW Carton	1	A1A
B10100	NEWSPRINT 18" ROLL	1	
B00029-010	BARCODE LABEL FOR KIT	1	

ASSEMBLY NOTES:

Issued: 7/2/2019

Clearance Instructions:

Rear SES Kits for Pick-Ups and Vans should have a 1/2" to 1-1/2" gap between the rubber spring and contact point when empty.

A partial load, or vehicle accessories will reduce or eliminate the gap.

Front SES kits are usually in full contact.

Medium and Heavy-Duty Trucks, Trailers and Motorhomes will be in constant contact, and have no gap.