

FFM2A

FREIGHTLINER

Front suspension package

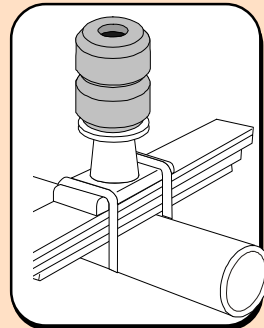
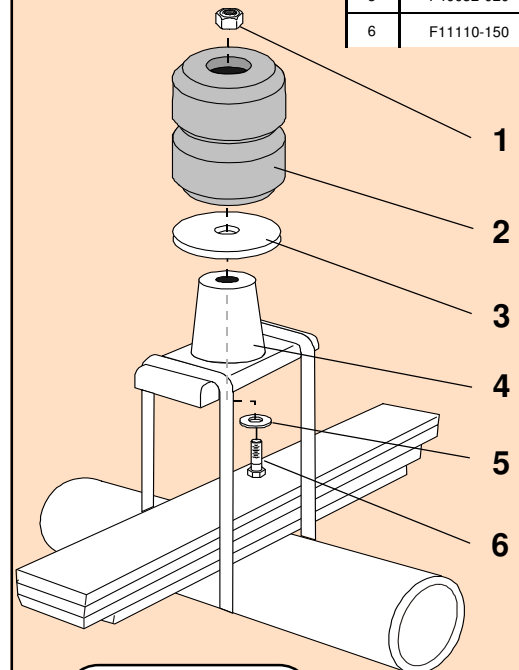
INSTALLATION INSTRUCTIONS

- a) Partially raise vehicle not allowing the axle to hang freely.
- b) Loosen axle U-bolts and remove existing bump stop.
- c) Assemble Aeon rubber spring and bracket as shown in the adjacent diagram.
- d) Mount Timbren assembly to axle & retighten U-bolts as per OEM specifications.
- e) Lower vehicle.

Do not exceed vehicle manufacturer's recommended axle weight rating. Check for AEON® interference with vehicle components - Under load AEON® will "expand" in diameter.

Ref. = Reference
Part = Part #.
Qty. = Quantity

| Ref | Part | Qty |
|-----|--------------|-----|
| 1 | F31005-150 | 2 |
| 2 | A00550-75F60 | 2 |
| 3 | A16120-003 | 2 |
| 4 | OEM | |
| 5 | F40052-020 | 2 |
| 6 | F11110-150 | 2 |



FFM2A

| PART NUMBER | DESCRIPTION | QTY | LOCATION |
|---------------------|---|----------|-------------|
| F31005-150 | NYLOCK LOCKNUT 1/2 UNF GR 5 Z | 2 | G1D |
| F40052-020 | WASHER FLAT USS 1/2 x 1-3/8 GR 2 Z | 2 | G1D |
| F11110-150 | HCS 1/2 x 3-1/2 UNF GR 5 Z | 2 | G2A |
| A00550-75F60 | Hollow Rubber Spring | 2 | C10A |
| A16120-003 | DISC 4 OD x 17/32 ID x 3/16 THK PAINTED | 2 | D20B |
| B90200-CF | SMALL FRONT BOX - 9.5 x 7 x 5.5 | 1 | A--E |
| B10000 | 8" x 12" BUBBLE FOR KITS | 1 | |
| B00029-010 | BARCODE LABEL FOR KIT | 1 | |

Clearance Instructions:

Rear SES Kits for Pick-Ups and Vans should have a 1/2" to 1-1/2" gap between the rubber spring and contact point when empty.

A partial load, or vehicle accessories will reduce or eliminate the gap.

Front SES kits are usually in full contact.

Medium and Heavy-Duty Trucks, Trailers and Motorhomes will be in constant contact, and have no gap.