

MSR001

Front suspension package

INSTALLATION INSTRUCTIONS

- a) Choose the best location:
 - 1) Center of U-bolt pad
 - 2) Immediate Rear of U-bolt pad
- b) Assemble frame bracket by welding items #1 & #2 together keeping in mind the following:
 - 1) Plate #2 should be positioned under bracket #1 to allow the Aeon spring to rest directly over the leaf spring
 - 2) Bracket #1 will be bolted to the frame using existing holes where possible to ensure that the distance from the bottom of plate #2 to the top of leaf spring is 4-3/4 inches. Adjust accordingly with the use of spacers. (Diagram A)
- c) With vehicle unloaded, mount bracket to frame using at least three 1/2" Gr.8 bolts.
- d) Raise vehicle to install remainder of Timbren assembly.
- e) If choosing to install at location diagram 1, weld disc/plate #6 to axle pad directly below Timbren assembly.
- f) Lower vehicle.

NOTES:

Countersunk bolt #3 will need to be tack welded into place prior to welding items #1 & #2.

If necessary, drill to enlarge holes in frame to 9/16" diameter.

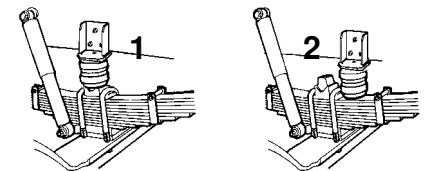
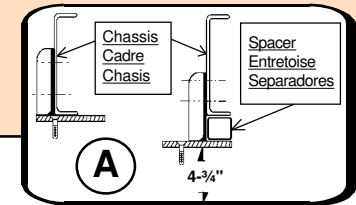
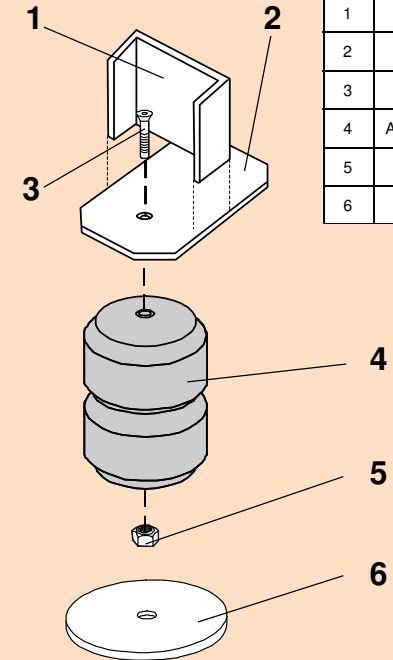
SAFETY CAUTIONS

Always refer to and follow the vehicle manufacturer's guidelines when welding or drilling during installation of this kit.

Do not exceed vehicle manufacturer's recommended axle weight rating. Check for AEON® interference with vehicle components - Under load AEON® will "expand" in diameter.

Ref. = Reference
Part = Part #.
Qty. = Quantity

Ref	Part	Qty
1	K51116-005	2
2	K52005-005	2
3	F12104-253	2
4	A00540-55E60	2
5	F31005-250	2
6	A1610B-005	2



MSR001



MSR001

PART NUMBER	DESCRIPTION	QTY	LOCATION
F31005-250	NYLOCK LOCKNUT 1/2 UNC GR 5 Z	2	G1B
F12104-253	FHSCS 1/2 x 2 UNC GR 5 B	2	J2C
A00540-55E60	Hollow Rubber Spring	2	C9A
K51116-005	FORMED PLATE 1/4 x 7 x 7-9/16	2	D4D
K52005-005	3/8 X 4-1/2 X 7	2	D4D
A1610B-003	WASHER 4-1/2 OD x 17/32 ID x 1/4 THK PTD.	2	D20A
B90211	#175 BOX - 10 x 8 x 5-1/2" c/w Timbren Logo	1	A6A
B10100	NEWSPRINT 18" ROLL	1	
B00029-010	BARCODE LABEL FOR KIT	1	

Issued: 10/25/2011

Clearance Instructions:

Rear SES Kits for Pick-Ups and Vans should have a 1/2" to 1-1/2" gap between the rubber spring and contact point when empty.

A partial load, or vehicle accessories will reduce or eliminate the gap.

Front SES kits are usually in full contact.

Medium and Heavy-Duty Trucks, Trailers and Motorhomes will be in constant contact, and have no gap.