

PTA200

PETERBILT

Rear suspension package

INSTALLATION INSTRUCTIONS

- a) Loosen axle U-bolts and remove existing U-bolt pad casting.
- b) Mount Timbren U-bolt pad casting #8 to axle & retighten U-bolts as per OEM instructions.
- c) Position bottom plate (item #6) over the U-bolts with bottom plate supports (item #7) fitting over U-bolt pad. Note offset.
- d) Level bottom plate & weld items #6 & #7 to U-bolt pad (see Diagram A).
- e) With vehicle unloaded & full air pressure, locate Timbren frame bracket above Timbren bottom plate at a measurement of 5" (see Diagram A).
- f) Drill holes for frame bracket providing for at least four ½" Gr.8 bolts through the bracket & frame. (Bolt frame bracket to frame using existing holes where possible).
- g) Assemble Aeon rubber spring and bracket as shown in the adjacent diagram.

NOTE OFFSET

Ensure adequate outboard offset and clearance.

SAFETY CAUTIONS

Apply proper welding procedures as per AWS A5.15-90 (R2006):1990. Use nickel-iron cored electrodes such as NickelRod 99 or Softweld 99 Ni.

Always refer to and follow the vehicle manufacturer's guidelines when welding or drilling during installation of this kit.

Ensure sufficient clearance between frame bracket & tire.

Re-torque U-bolts to OEM specifications.

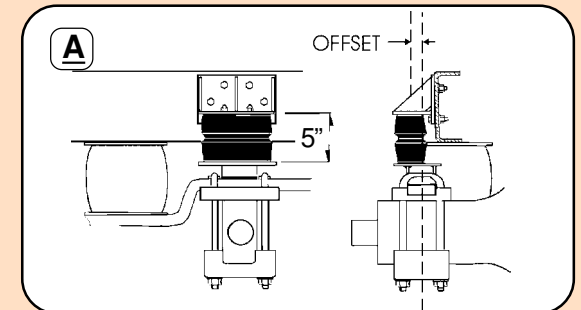
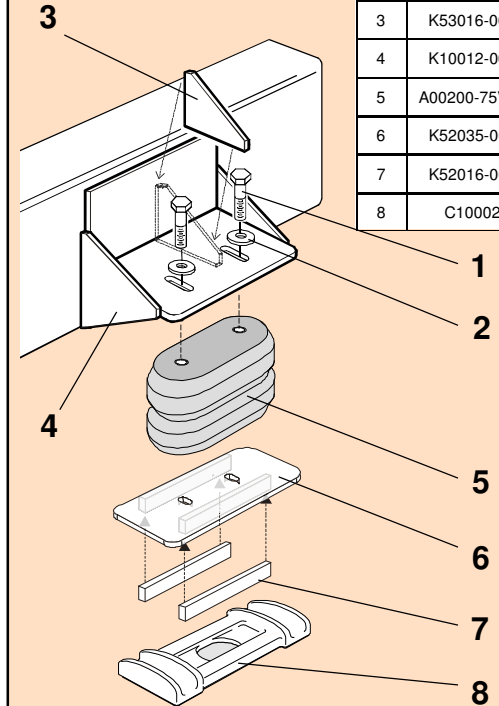
OVERLOAD PREVENTION:

A working height less than 2" results in overload condition of item 5. If this condition exists during operation of vehicle, customer supplied mechanical stop to limit suspension travel must be used.

Do not exceed vehicle manufacturer's recommended axle weight rating. Check for AEON® interference with vehicle components - Under load AEON® will "expand" in diameter.

Ref. = Reference
Part = Part #.
Qty. = Quantity

Ref	Part	Qty
1	F11102-150	4
2	F40052-020	4
3	K53016-005	2
4	K10012-005	2
5	A00200-75V00	2
6	K52035-005	2
7	K52016-005	4
8	C10002	2



PTA200



PTA200

PART NUMBER	DESCRIPTION	QTY	LOCATION
F40052-020	WASHER FLAT USS 1/2 x 1-3/8 GR 2 Z	4	G1D
F11102-150	HCS 1/2 x 1-1/2 UNF GR 5 Z	4	G1D
A00200-75V00	Hollow Rubber Spring	2	C16A
K10012-005	PTA200 WELDMENT - PAINTED	2	D6A
K52035-005	AEON PLATE 3/8 x 4-1/2 x 9 PAINTED	2	D4C
K53016-005	GUSSET 3/8 x 1-1/2 x 3 PAINTED	2	D6B
K52016-005	FLAT PLATE 3/8 x 2 x 5" PAINTED	4	D6B
C10002	PETERBILT TOP PLATE # E-4781	2	D6C
B90223	10-3/4 x 9-1/2 x 7 DW Carton	2	A1A
B10100	NEWSPRINT 18" ROLL	1	
B00029-010	BARCODE LABEL FOR KIT	2	
	1 of 2 & 2 of 2 LABELS	1 ea.	

ASSEMBLY NOTES:

ALL COMPONENTS ARE DIVIDED IN HALF AND PACKAGED INTO TWO IDENTICAL PACKAGES.

APPLY "1 of 2" and "2 of 2" LABELS TO CARTONS

Issued: 11/6/2014

Clearance Instructions:

Rear SES Kits for Pick-Ups and Vans should have a 1/2" to 1-1/2" gap between the rubber spring and contact point when empty.

A partial load, or vehicle accessories will reduce or eliminate the gap.

Front SES kits are usually in full contact.

Medium and Heavy-Duty Trucks, Trailers and Motorhomes will be in constant contact, and have no gap.