



TRUE FRAME MOUNTED CAMPER TIE DOWNS

IMPORTANT OWNER-OPERATOR INSTALLATION INSTRUCTIONS C2215/FMTPJ11CHRGLB

Minor movement (or settling) can occur in some incidental harsh driving conditions (On or off road). A rubber bed mat is not a requirement to maintain the lifetime warranty on a Torklift system, but a strong recommendation, simply as a safety precaution to protect the truck bed, the bottom of the camper and to give the camper additional support.

Warning!!

TORKLIFT DOES NOT RECOMMEND: Installing your truck camper in your truck on top of a drop in plastic bed liner!!! **THIS WILL VOID YOUR WARRANTY!**

The drop in plastic bed liners can slide on top of the truck bed surface, and the camper can slide on top of the slick surface of the bed liner. The liner can also act as a spring causing a trampoline effect increasing vertical truck camper movement, independent of the vehicle, possibly resulting in truck bed damage and/or camper damage!

C2215 PARTS INVENTORY

4- 1/2"-13 X 1-1/2" Hex Bolt	2- Snapper Pin
2- 1/2"-13 X 3-3/4" Hex Bolt	2- 1/2"-13 Hex Nut - Serrated Flange
2- 5/16" Hook Bracket	2- 1/2"-13 Hex Nut - Silver
2- 15-7/8" Flat Bar - Bent	2- 1/2"-13 Hex Nut - Gold
2- Support Plate	4- 1/2" Star Washer
2- Tie Down Frame Plate	4- 1/2" Lock Washer
2- Straight Tie Down Insert	2- 1/2" Flat Washer
2- 3/4" Flat Washer	2- 3/4" Lock Washer
2- 3/4"-10 Hex Nut	2- 3/4"-10 X 4-1/2" Hex Bolt
1- 3M Industrial Adhesive Tape*	

INSTALLATION INSTRUCTIONS:

LOCATE AND INVENTORY ALL PARTS TO BECOME FAMILIAR WITH ALL BRACKETS. READ AND UNDERSTAND ALL INSTRUCTIONS. MAKE SURE THE VEHICLE IS IN PARK, ON A LEVEL SURFACE AND WHEELS ARE CHOCKED BEFORE STARTING THE INSTALLATION. * NOTE: SOME VEHICLES ARE SLIGHTLY DIFFERENT LOOK FOR THE BED MOUNT PERCH FOR REFERENCE POINT.

Installing The Drivers Side First...

STEP 1

Locate the drivers side front bed mount perch and remove the bolt at the top that connects to the bed cross member. Take the Support Plate with the bend facing up and place one 1/2"-13 X 3-3/4" Hex Bolt and one 1/2" Star Washer through the hole on the left side. On the right side of the Support Plate place one 1/2"-13 X 1-1/2" Hex Bolt and one 1/2" Star Washer through the hole. **PHOTO 1.1, 1.2, 1.3)**

STEP 2

Take the Support Plate with the 1/2" bolts and place behind the bed mount perch (*on top of the frame*) with the bolts protruding out. Remember; the longer bolt will be on the rear most side of the bed mount perch and the shorter bolt will be to the front of the bed mount perch. Take one 5/16" Hook Bracket and place over the 1/2"-13 X 3-3/4" Hex Bolt along with one 1/2" Lock Washer and one 1/2"-13 Hex Nut - Gold; hand tighten. Locate the 15-7/8" Flat Bar - Bent, along with the factory bolt previously removed in step 1 and re-install with the 15-7/8" Flat Bar - Bent slightly facing the front of the vehicle. Hand tighten. **PHOTO 2.1, 2.2, 2.3)**

STEP 3

Locate the drivers side tie down frame plate and place the unit on the frame, lining it up with the 1/2"-13 X 1-1/2" Hex Bolt on the upper right hand side and the 3/4" hole in the frame, just to the right of the cab mount perch. Insert one 1/2" Flat Washer, one 1/2" Lock Washer, and one 1/2"-13 Hex Nut - Silver and hand tighten. Then insert the 3/4"-10 X 4-1/2" Hex Bolt through the 3/4" hole in the tie down frame plate. On the inside of the frame, place one 3/4" Flat Washer, one 3/4" Lock Washer, and one 3/4"-10 Hex Nut onto the previously installed 3/4" Bolt. Hand Tighten. **PHOTO 3.1, 3.2)**

STEP 4

Connect the 15-7/8" flat bar - bent to the tie down receiver with one 1/2"-13 X 1-1/2" Hex Bolt and one 1/2"-13 Hex Nut - Serrated Flange. Slide the driver's side insert. Hand tighten. **PHOTO 4.1, 4.2)**

STEP 6

For passenger side installation, repeat steps 1-7 on passenger side.

**NOTE: In some Instances, a NOX sensor may be in the way of installing the tie down on the passenger side. Use the supplied "3M Industrial Adhesive Tape" to relocate the sensor onto the tie down plate. See Photo below.*



STEP 7

Tighten all fasteners to 60 ft-lbs with a Torque Wrench.

PHOTO 1.1 NOTE: ALL PHOTOS ARE OF DRIVERS SIDE INSTALLATION



PHOTO 1.2

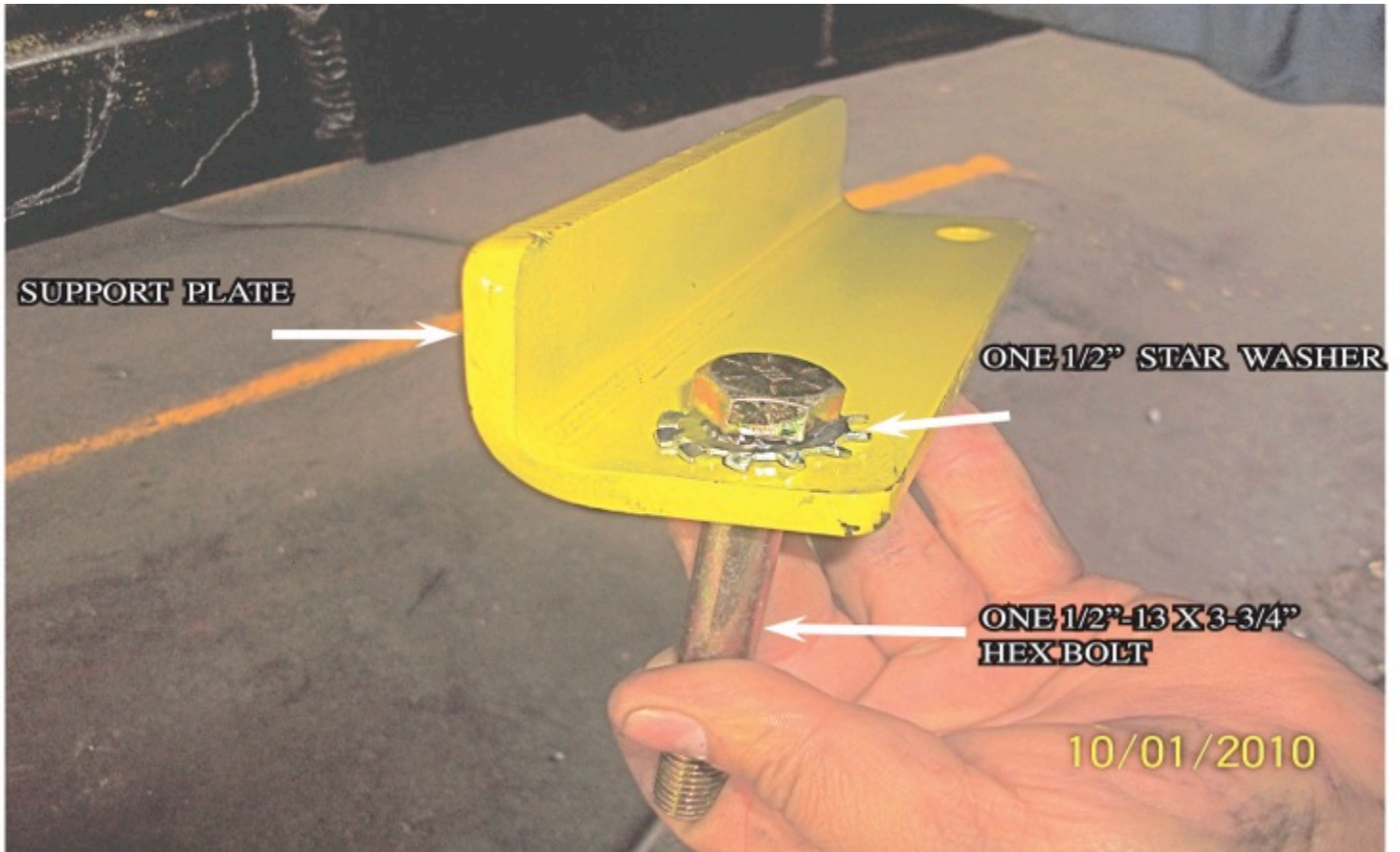


PHOTO 1.3

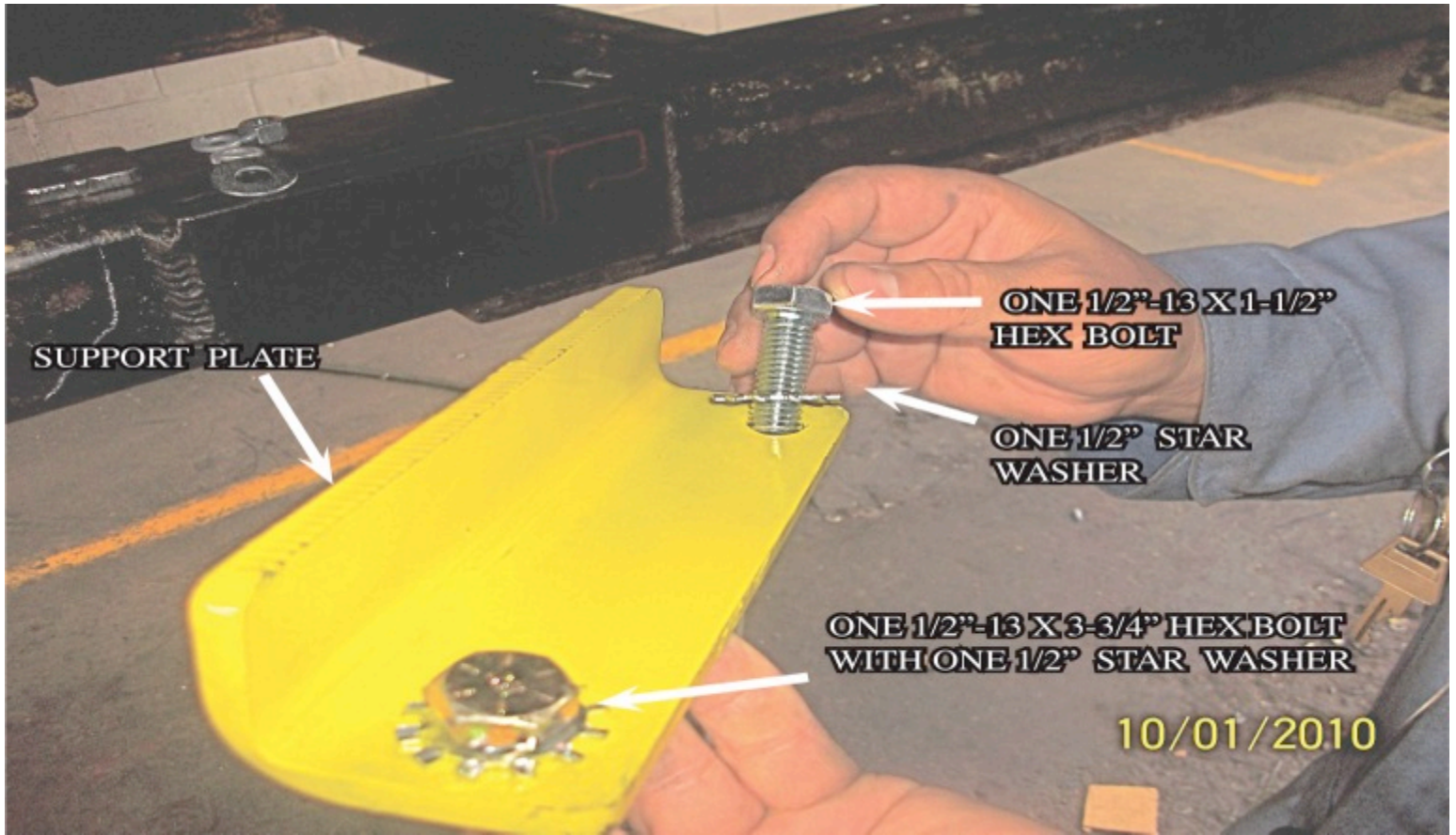


PHOTO 2.1

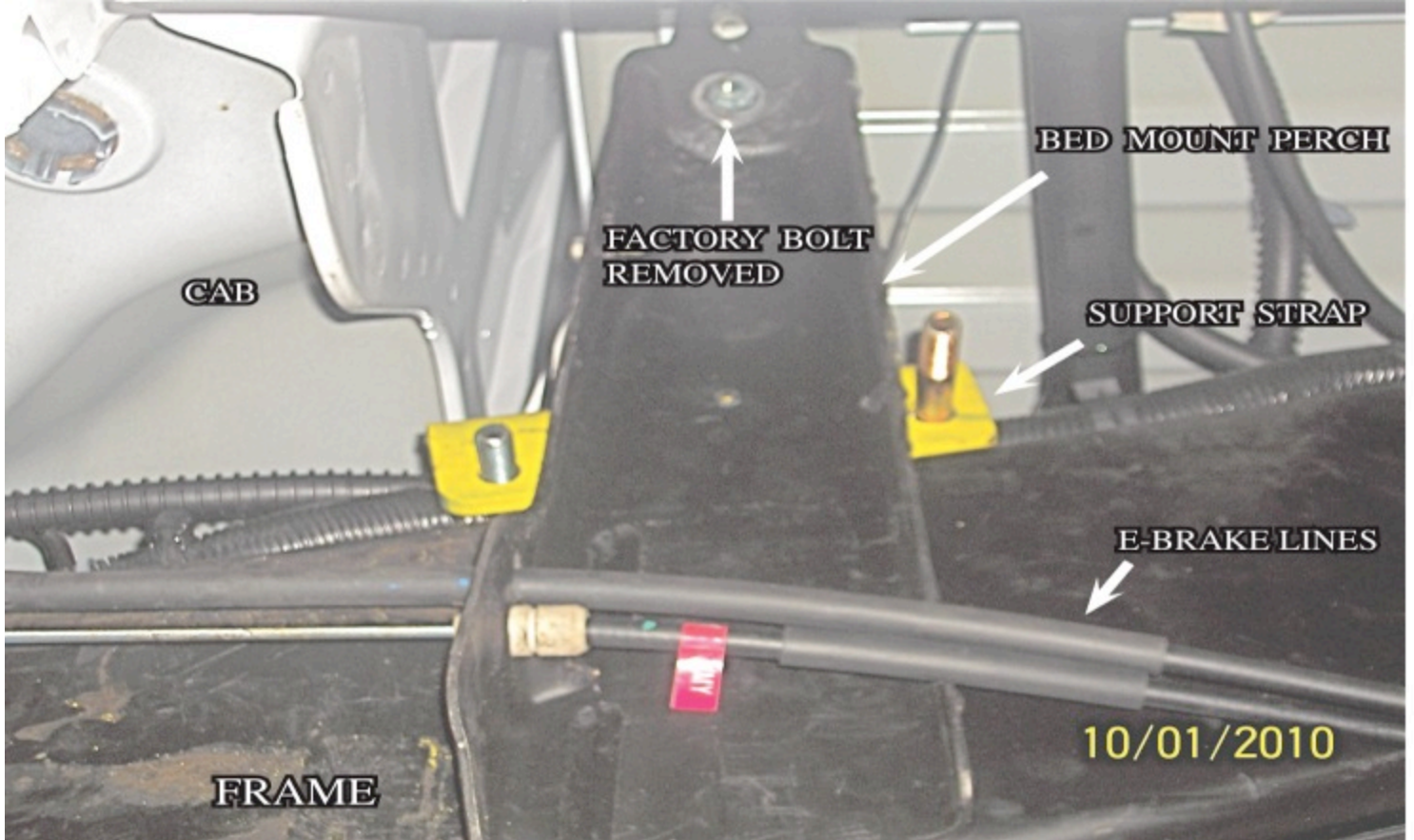


PHOTO 2.2



PHOTO 2.3

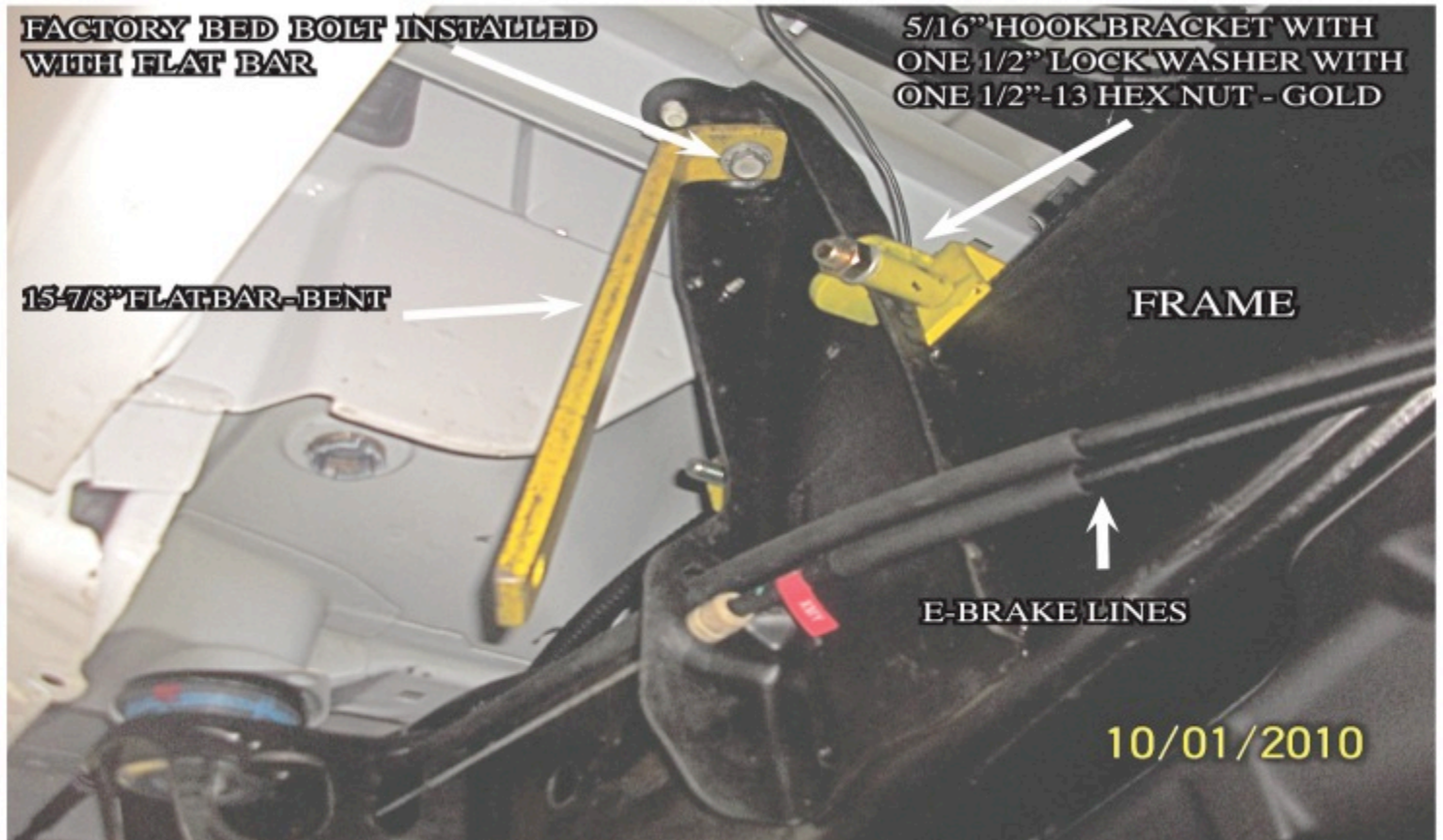


PHOTO 3.1

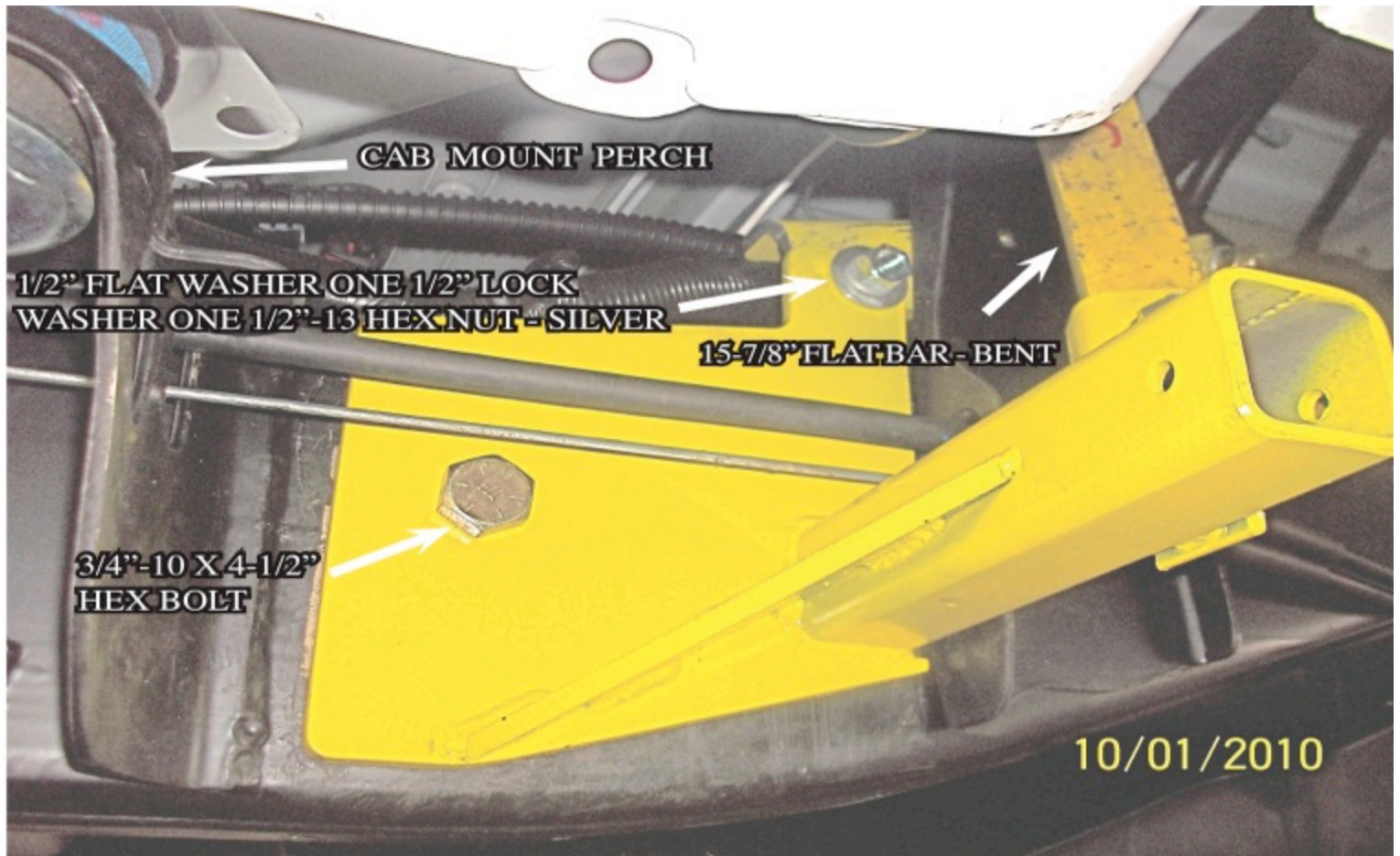


PHOTO 3.2

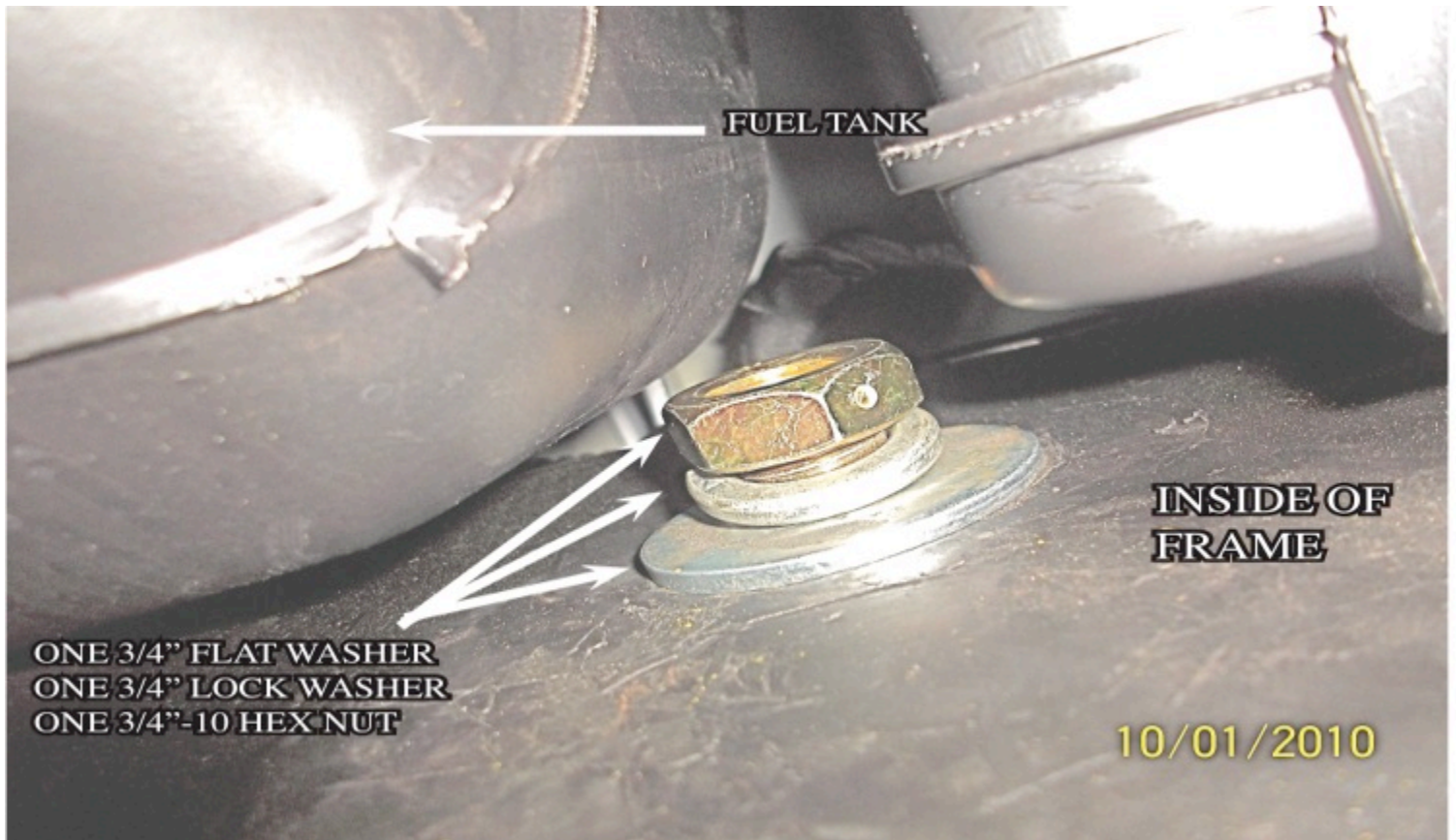


PHOTO 4.1

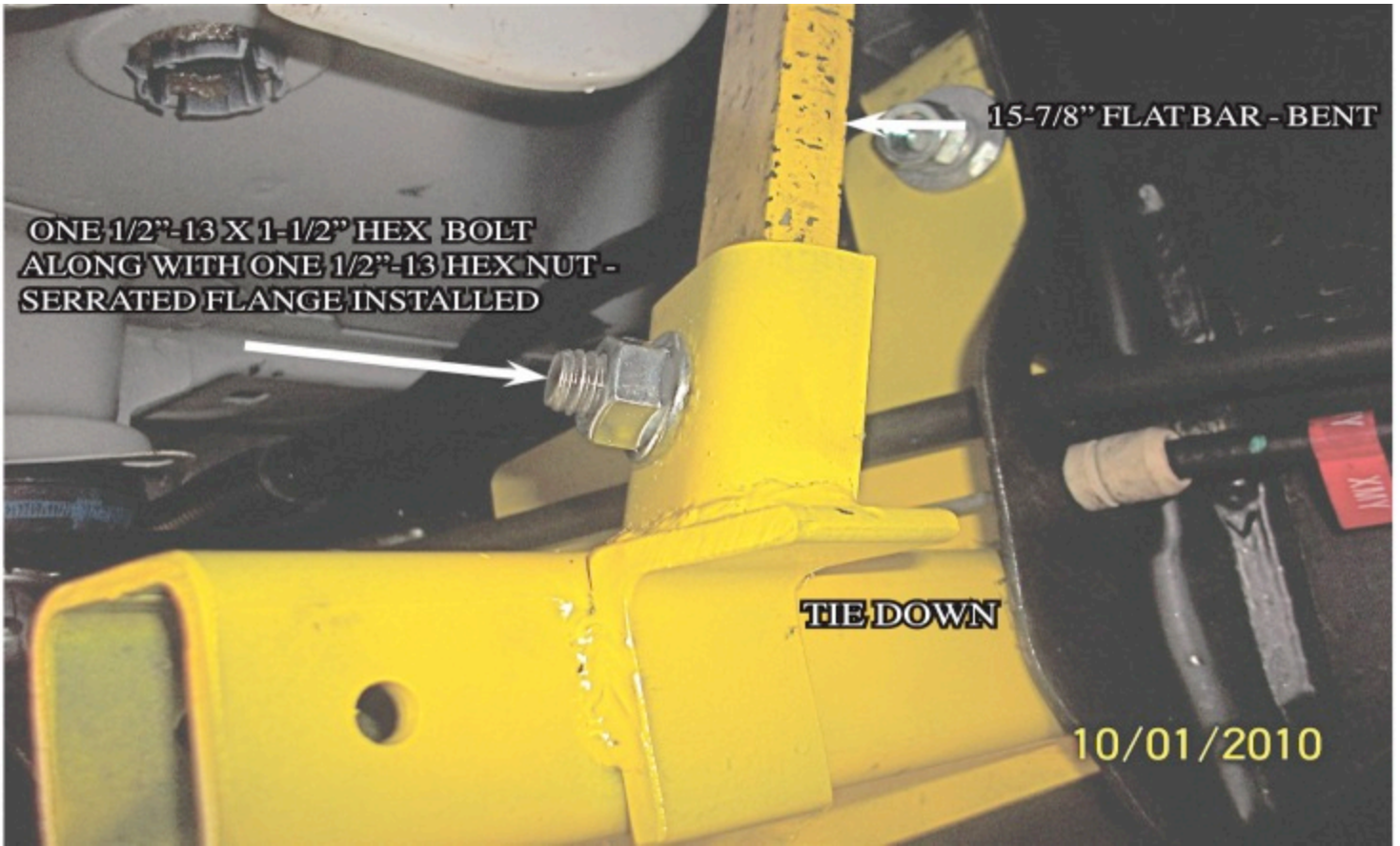


PHOTO 4.2



INSTRUCTIONS FOR MAINTENANCE OF POLISHED STAINLESS STEEL PRODUCTS



Torklift utilizes quality grade 304 stainless steel in this product.

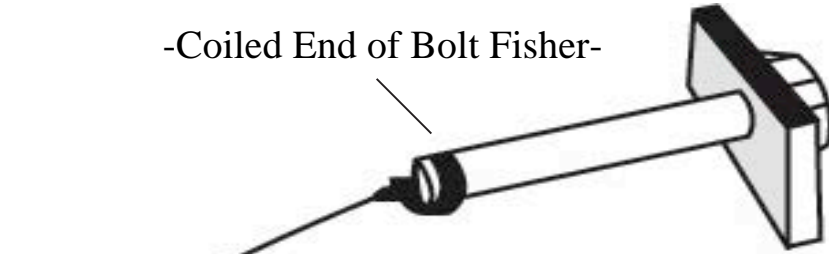
304 stainless steel is well known for its anti corrosive properties, however in some environments such as coastal regions or when in contact with some road chemicals, corrosion may occur.

We recommend occasional polishing of our product to maintain its attractive finish. Use an approved stainless steel cleaning/polishing product, which can be purchased from any automotive supplier.

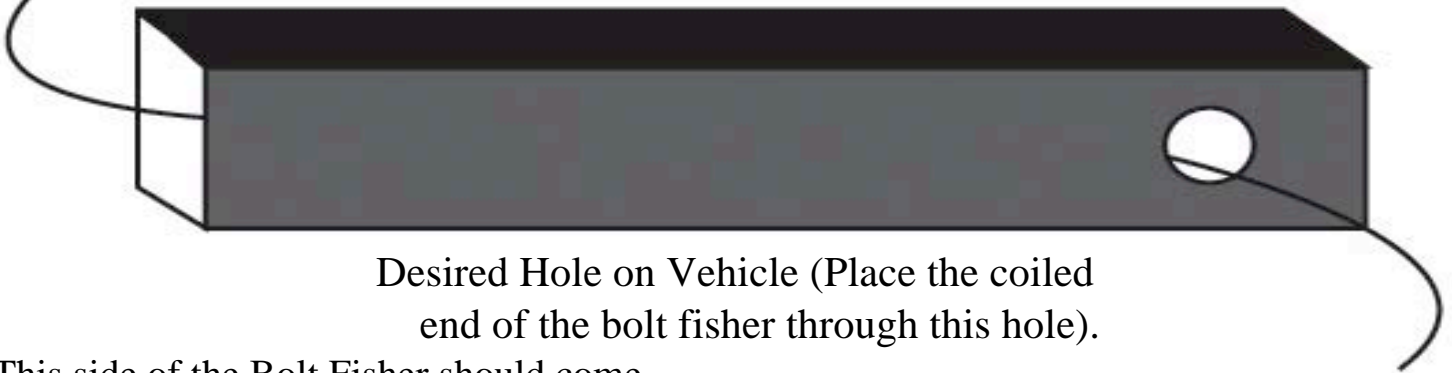
TORKLIFT'S BOLT FISHING GUIDE

Your guide to understanding the installation of our frame mounted tie downs.

-Coiled End of Bolt Fisher-

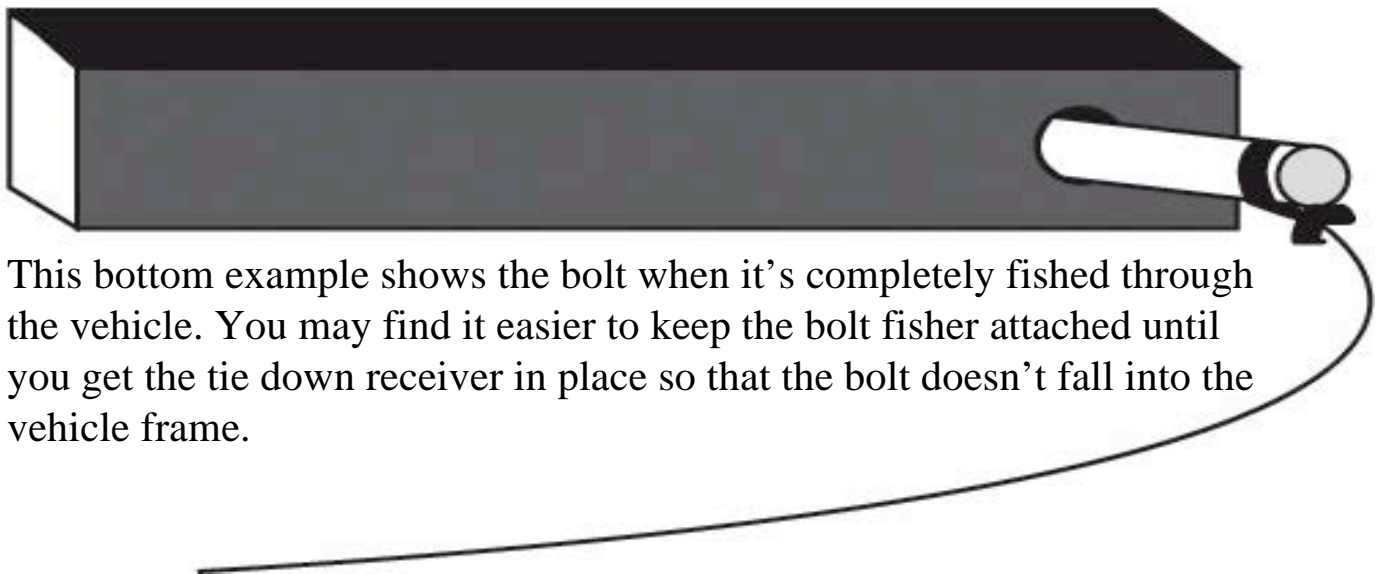


Note: The hardware may vary as to what is being fished along with the bolt. In this instance a 1" X 2" plate washer is being fished along with the hex bolt. Different applications may require fishing through various star washers and flat washers for example.



Desired Hole on Vehicle (Place the coiled end of the bolt fisher through this hole).

This side of the Bolt Fisher should come out of a hole where the required hardware (for example 1" X 2" plate washer) can pass through.



This bottom example shows the bolt when it's completely fished through the vehicle. You may find it easier to keep the bolt fisher attached until you get the tie down receiver in place so that the bolt doesn't fall into the vehicle frame.

WARNING: PULLING TOO HARD ON THE BOLT FISHER CAN RESULT IN LOST FASTENERS, OR BROKEN BOLT FISHER.

TIEDOWN INSERT INSTALLATION INSTRUCTIONS

On one end of each of your tie down inserts is a triangular plate referred to by Torklift as a bullet plate. Your tie down inserts should be installed with the shorter side of the bullet plate facing away from each other, i.e.. The shorter side of the front insert should point to the front of the truck and the shorter side of the rear insert should point towards the rear of the truck.

Once installed, attach the TorkLift directional stickers to the face of the bullet plate on the insert as a reminder.

DRIVERS SIDE FRONT



DRIVERS SIDE REAR



SHORTERSIDE
RECOMMENDED TRUCK CAMPER

INSTALLATION INSTRUCTIONS

When securing any heavy load (especially a camper) in your truck bed, your front tie down points should pull the load forward as much as possible. Some camper anchor points may differ with different manufacturers, as well as the camper jack mounting locations. Your Torklift tie down inserts has offset triangular brackets to increase the angle of pull. These are designed to be used in the front facing forward, and the rear facing rearward but can be used in either front or rear. These recommendations are to be considered and followed as a basic rule of thumb. Obviously there will be some applications where this may not be possible. At a minimum, if opposite pull of both front and rear tie downs cannot be achieved for whatever reason, you should have at least a forward pull at the front or rear location.

If your camper does not come with Rubber Bumpers on the front lower portion of the camper, installing Rubber Bumpers (Torklift has Rubber Bumpers available Part A7001) or using a block of wood such as a 2 x 4 in the bed, will prevent the camper from damaging the front bulk head of the truck bed.

Minor movement (or settling) can occur in some incidental harsh driving conditions (on or off road). A rubber bed mat is not a requirement to maintain the lifetime warranty on a Torklift system, but a strong recommendation simply as a safety precaution to protect the truck bed, the bottom of the camper and to give the camper additional support.

TORKLIFT DOES NOT RECOMMEND: Installing your truck camper in your truck on top of a drop in plastic bed liner!!! The drop in plastic bed liners can slide on top of the truck bed surface, and the camper can slide on top of the slick surface of the bed liner. The liner can also act as a spring causing a trampoline effect increasing vertical truck camper movement, independent of the vehicle, possibly resulting in truck bed, and camper damage!

INSTRUCTIONS FOR FINISH MAINTENANCE OF TORKLIFT PRODUCTS

POWDER COATED STEEL:

To keep your Torklift products looking good follow these guidelines. All steel powder coated Torklift products are sandblasted for maximum adhesion and use a high quality industrial urethane based powder coat. Due to the extreme, harsh, undercar environment that your Torklift products live in, (consistently sprayed with corrosive road chemicals such as salt, and road debris), Torklift does not warranty the power coated finish. To minimize corrosion from these factors on powder coated steel products, Torklift recommends regularly cleaning and inspecting the powder-coated surface and touching up any affected areas with enamel or urethane based aerosol paint product. If there are any areas of surface rust, there are also aerosol spray rust converters available on the market that can be used as a preparation to touch-up paint application. These finish maintenance products are available at any automotive parts supplier.

POLISHED STAINLESS STEEL:

Torklift utilizes quality grade 304 stainless steel in our stainless steel polished products. 304 stainless steel is well known for its anti-corrosive properties. However, in some environments such as coastal regions or when coming in contact with some road chemicals, corrosion may occur.

For a quick clean simply use WD40 and a cloth rag. We also recommend occasional polishing of our polished stainless products to maintain their attractive finish. Use an approved stainless steel chrome or aluminum mag wheel polish cleaning product, which can be purchased from any automotive parts supplier.

Frame Mounted Tie Downs

Leading the camper tie down industry in strength, quality, advanced design and installation. TorkLift TRUE frame mounted tie downs are far superior to all tie down systems available.

The TorkLift system is unique in its design and is patented. Four independent tie down points (with no belly or crossbar) working much like your receiver type trailer hitch as the inserts are removable allowing the system to be virtually undetectable when not in use.

They are designed for each make and model to fit tight to the frame so as not to compromise ground clearance. TorkLift tie downs are not universal 'one size fits all' therefore all the problems with correct fit for each particular application have been eliminated.

Original SuperHitch & SuperHitch Magnum

High strength extended hitch system engineered for safely towing all types of trailers behind your truck and camper. With a max towing capacity of 14,000 lbs. with an extension*, (17,000 lbs. to 20,000 lbs. without*) the Original SuperHitch and SuperHitch Magnum are rated the strongest in the industry.



TURNBUCKLE SPRINGLOAD OPTIONS

CONTACT YOUR LOCAL DEALER FOR MORE DETAILS

Torklift requires all 4 tie down points to be spring loaded in order to qualify for our manufacturers

Industry Exclusive “Camper Anchor” and “Truck Frame” Warranty

BASIC SPRINGLOAD KIT – S9000

Includes 2 External Springload Cylinder Units, 2 Heavy Duty Forged Turnbuckles and 24” of Chain. Also comes with the TorkLift Lifetime Guarantee.



FASTGUNS LEVER ACTION TURNBUCKLES FOR BED MOUNTED TIEDOWNS

S9520-GREY SS / S9521-WHITE SS / S9527-POLISHED SS

FOR FRAME MOUNTED TIE DOWNS

S9522-GREY SS/ S9523-WHITE SS/ S9526-POLISHED SS
S9529-BLACK SS

FRAME OR BUMPER MOUNTED TIEDOWNS

Includes 2 Stainless Steel Turnbuckles with an Internal “Set” Spring. Available in 2 Lengths and 4 Finishes (Grey, White, Polished Stainless Steel and Black) Lifetime Guarantee.



FASTGUN DERRINGERS S9528

Transforms Your Pre-Existing Conventional Turnbuckles into a Lever Action FastGun Style Turnbuckle.

Kit includes 4 Lever Action Derringers. Also comes with the TorkLift Lifetime Guarantee.



SPRINGLOAD XL KIT - S9050A

This set includes 2 Long Square Bodied Turnbuckles with an Internal “Set” spring. The Springload XL Kit comes with a High Impact Powder coated Finish and is compatible with the FastGun Derringer handles. Lifetime Guarantee.

