



TORKLIFT

I N T E R N A T I O N A L

OVER 35 YEARS OF INNOVATION, QUALITY, SAFETY.



TRUE FRAME MOUNTED CAMPER TIE DOWNS

IMPORTANT OWNER-OPERATOR INSTALLATION INSTRUCTIONS

F2014A

Warnings

Truck Bed and Camper Protection

Torklift **does not** recommend installing your camper on top of a plastic bed liner (or other compressible material such as foam). These materials can act as a spring, causing increased vertical truck camper movement independent of the vehicle. Plastic bed liners can slide on the truck bed surface, and the truck camper can slide on top of the bed liner. Using a plastic bed liner or similar compressible material will void your warranty and may additionally cause truck bed and/or camper damage.


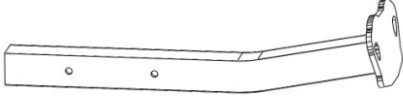













Minor movement or settling can occur in some incidental harsh driving conditions (on or off-road). A rubber bed mat is recommended to protect the truck bed and camper, but is not a requirement to maintain the Torklift legendary lifetime warranty.

Suspension

To significantly reduce body roll, sag and sway Torklift strongly recommends the StableLoad. Torklift International StableLoads improve safety, handling, and to help level your truck.

If your truck is additionally equipped with suspension air bags Torklift cautions against over pressurization as this may lead to unsafe vehicle handling characteristics. We have found that airbags used in conjunction with StableLoads have allowed operators to lower air bag pressure by 50% or more. Only pressurize suspension air bags enough to level the truck.

F2014 PARTS INVENTORY

	<u>Tie Down Receiver</u>	2
	Bent Tie-Down Insert	2
	Driver Side Upper Gusset Reinforcement	1
	1"(2.54cm) x 2"(5cm) Plate Washer	4
	1/2" USS Flat Washer	4
	1/2" Bolt Fisher	1
	1/2" x 1-3/4" Grade 5 Bolt	4
	1/2"-13 Grade 5 Nut	4
	1/2" Star Washer	4
	1/2" Lock Washer	4
	7/16" x 1-1/4" Grade 5 Bolt	3
	7/16"-13 Grade 5 Nut	3
	7/16" Lock Washer	3
	TD Finishing Kit	1
	Nylon Zip Tie	1

INSTALLATION INSTRUCTIONS:

1. Locate and inventory all parts to become familiar with all brackets. Familiarize yourself with the

bolt fishing procedure outlined on page 9, as well as the hardware layout below. (Photo 1.1)

Inside
Frame



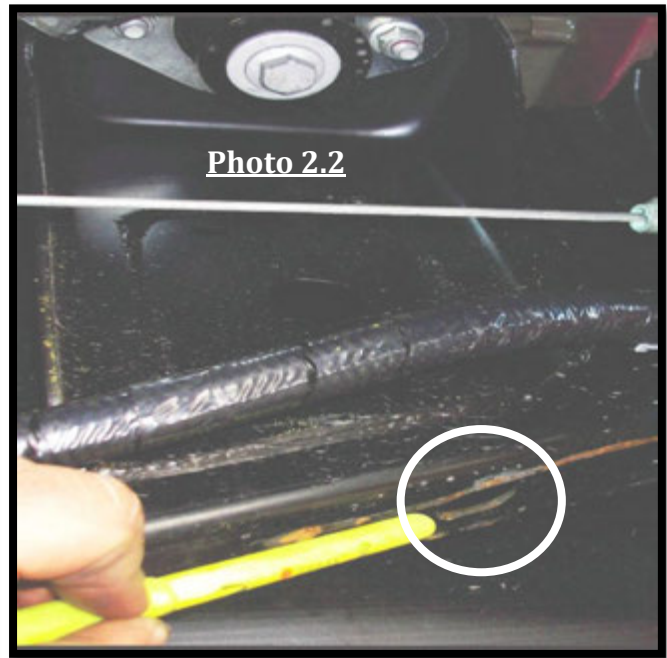
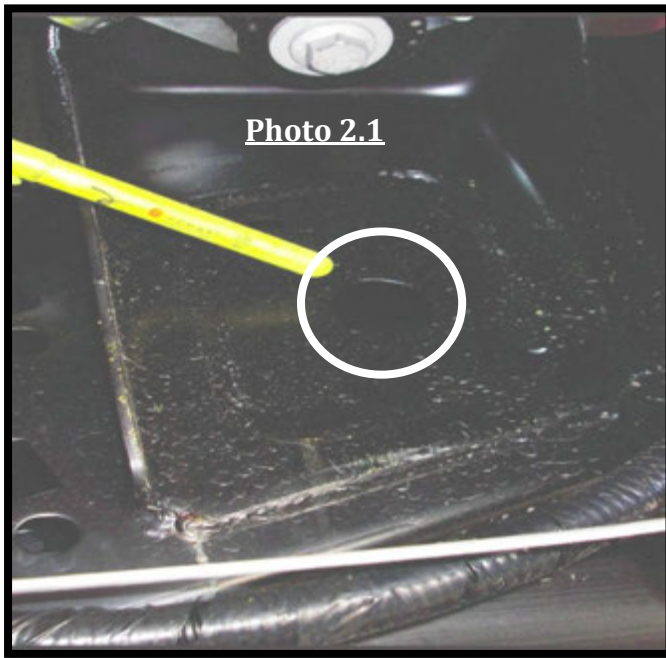
Outside
Frame



Photo 1.1

2. Begin installation with the driver's side of the vehicle. Locate the hole on the side of the frame, directly below the rear most cab mount. Note that there is a cab mount bushing that may hang down significantly depending on your model year. Next, locate the oval hole on the bottom of the frame directly below the 1st hole.

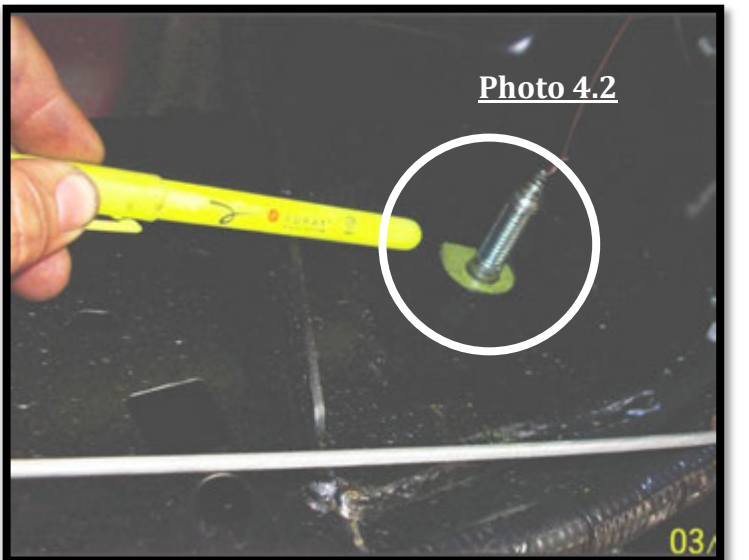
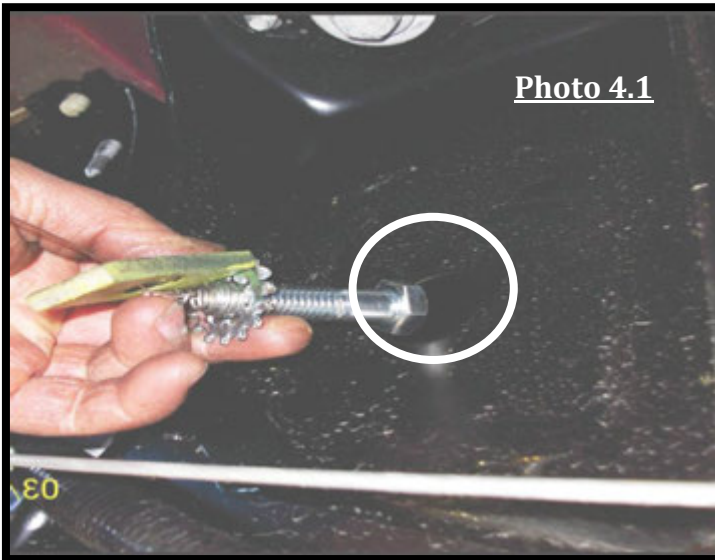
(Photos 2.1 & 2.2 Below)



3. Using the supplied 1/2" bolt fisher, attach one 1/2" x 1-3/4" Grade 5 bolt along with one 1/2" star washer, and one 1" (2.54cm) x 2" (5cm) plate washer, then fish it through the upper hole and out through the lower hole. (Photos 3.1 & 3.2)



4. Next, using the same 1/2" bolt fisher, attach another 1/2" x 1-3/4" Grade 5, with one 1/2" star washer, and one 1" (2.54cm) x 2" (5cm) plate washer. You will then push the bolt through the 1st hole and pull it back out the same hole. Be sure to leave the 1/2" bolt fisher attached, so the bolt cannot fall into the frame. (Photos 4.1 & 4.2)



5. Move the **tie down receiver** into position by running the **1/2" bolt fisher** wire through the center hole in the **tie down receiver** to help with alignment. It will be necessary to move the factory wiring harness out of the way and route the parking brake cable into the hole as shown. The wiring harness will be re-secured to the **tie down receiver** later in the installation. (Photo 5.1 & Figure 5.1)

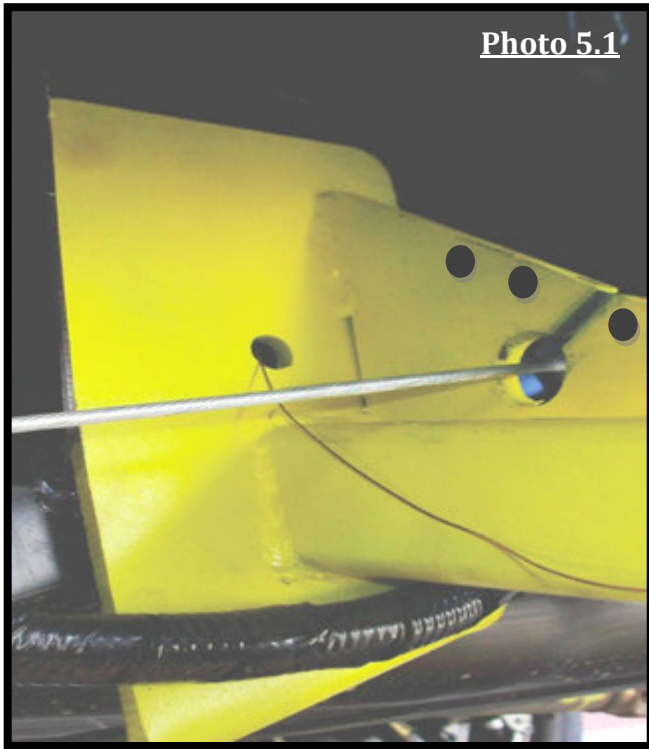


Photo 5.1

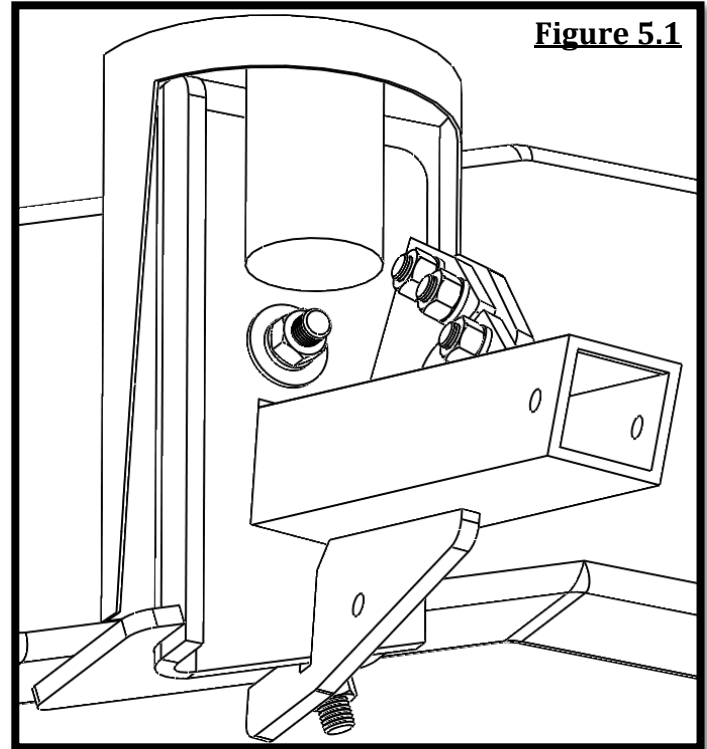
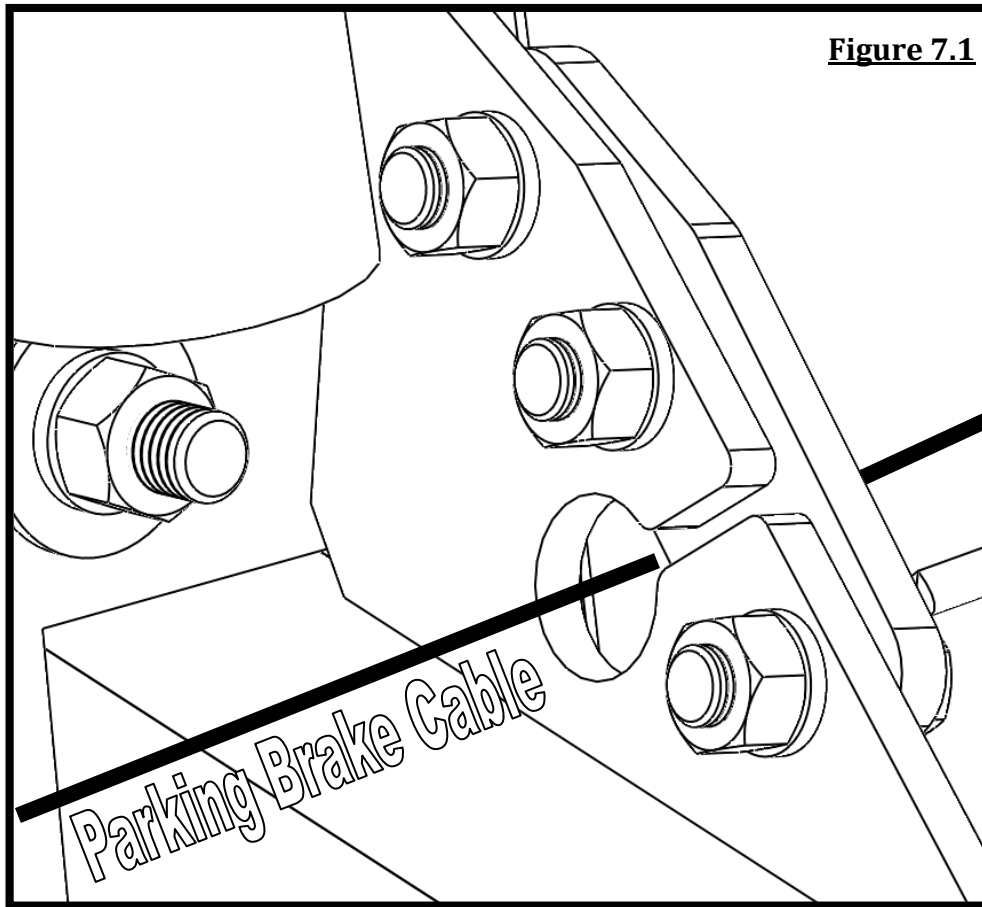


Figure 5.1

6. With the two **1/2" x 1-3/4" Grade 5 bolts** protruding through the tie down mounting holes, the **tie down receiver** can be secured to the frame. Install a **1/2" flat washer**, **1/2" lock washer**, & **1/2" hex nut** onto each protruding bolt and hand tighten. Please reference the example photos below. (Photos 6.1 & 6.2)

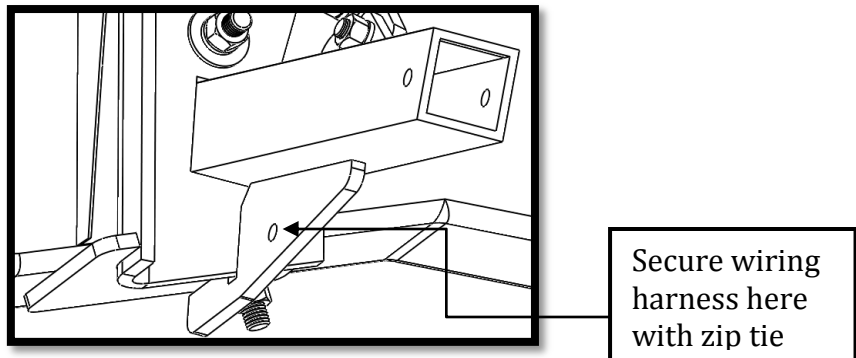


7. Attach the **driver side gusset reinforcement** with three **7/16" x 1-1/4" Grade 5 Hex Bolts**. Make sure the parking brake cable is routed through the large center hole on the **tie down receiver**. (Figure 7.1)



8. Tighten the lower **1/2" x 1-3/4" Grade 5 Bolt** that is on the bottom of the **tie down receiver**, followed by the upper **1/2" x 1-3/4" Grade 5 Bolt**, to 95 ft-lbs.(128nm) Tighten the three **7/16"x1-1/4"** bolts on the driver side gusset to 45 ft-lbs.(61nm)

9. Re-secure the factory wiring harness to the driver side tie down receiver using the included **nylon zip tie** and hole provided. (Figure 9.1)



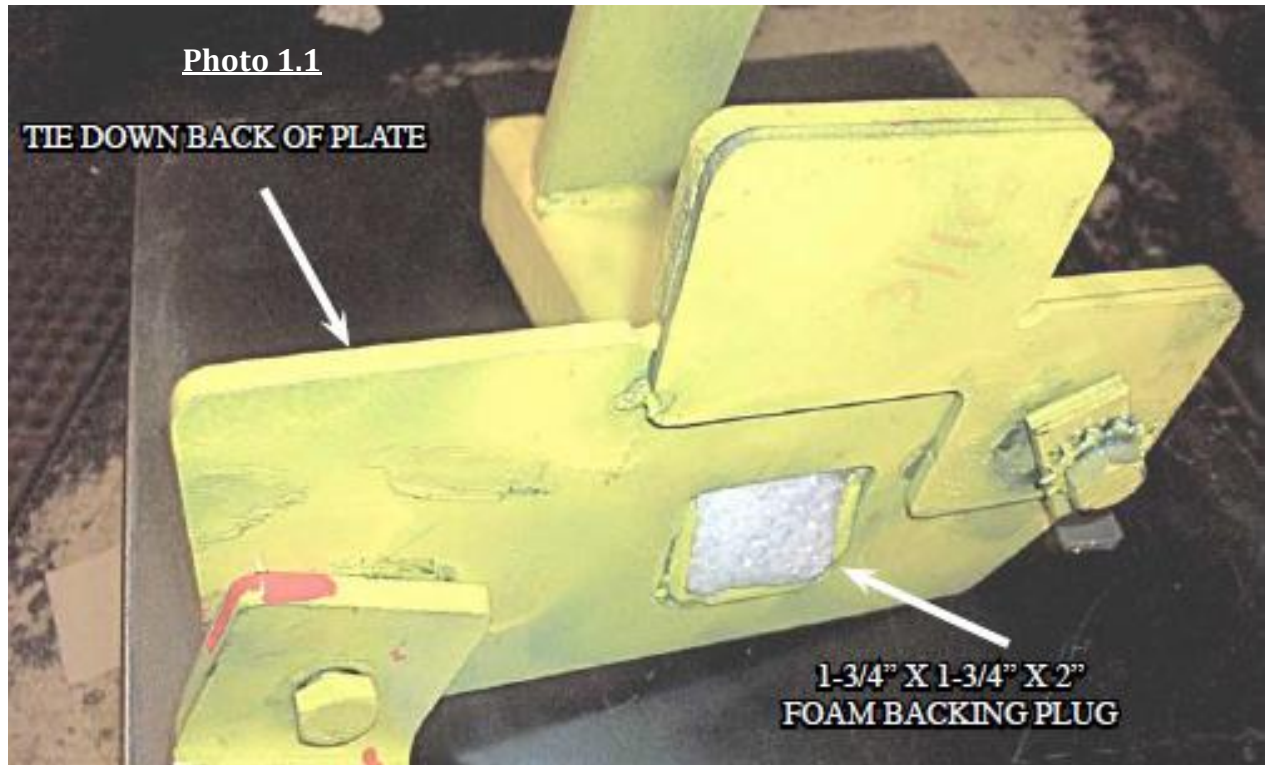
10. Repeat steps 1-8 for the passenger side tie down, with the exception of step 7 as the passenger side gusset is a single piece.

TD Finishing Kit Installation

	1-3/4" x 1-3/4" X 2" Foam Backing Plug	2
	2" x 2" x 1-1/2" Receiver Cap	2

Step 1

Insert one **Foam Backing Plug** into the back of the **Aluminum Tie Down Receiver** opening. If the back of the receiver is inaccessible, insert the **Foam Backing Plug** in the front of the **Aluminum Tie Down Receiver** and press it back with the **Tie Down Insert**. (See Photo 1.1)



Step 2

Insert one **2" x 2" x 1-1/2" Receiver Cap** over the end of the **Aluminum Tie Down Receiver**. (See Photo 2.1) If the **2" x 2" x 1-1/2" Receiver Cap** does not fit over the receiver, you will need to notch it out using a box knife or similar. (See Photo 2.2.)

PHOTO 2.2

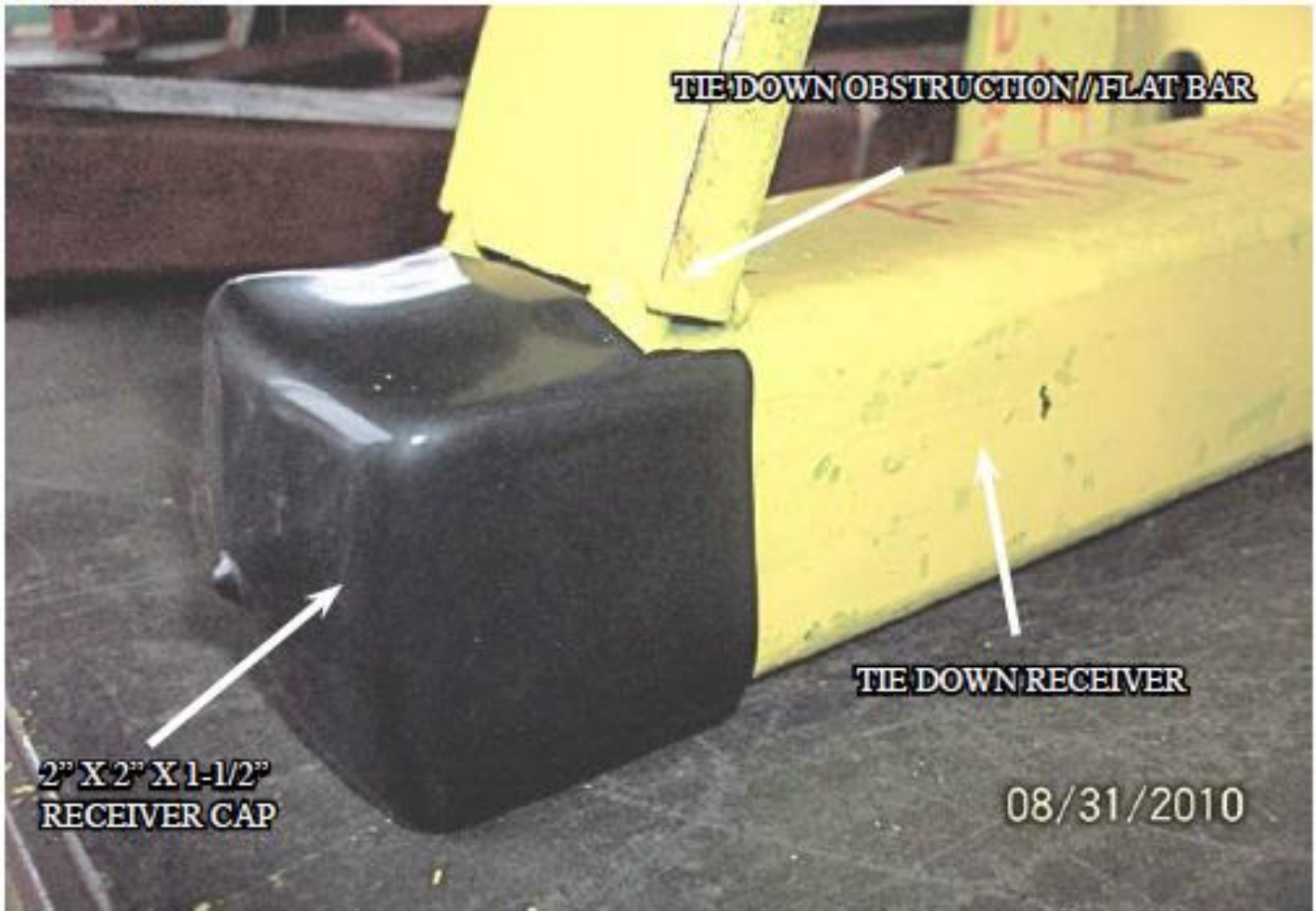


PHOTO 2.1

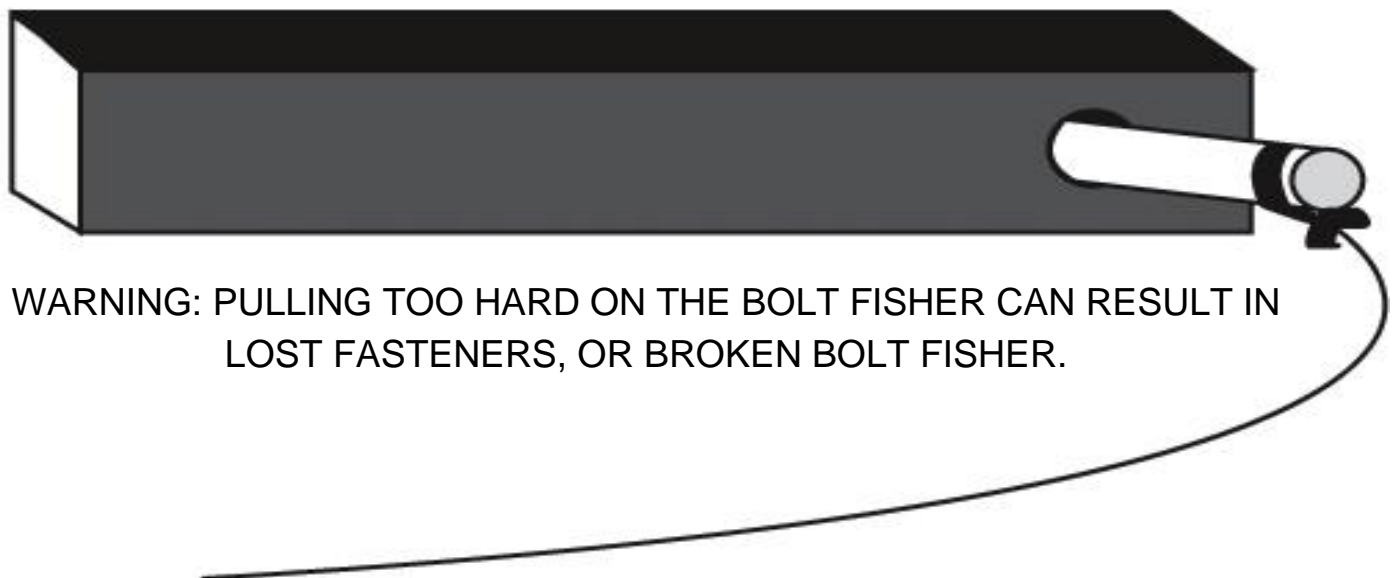
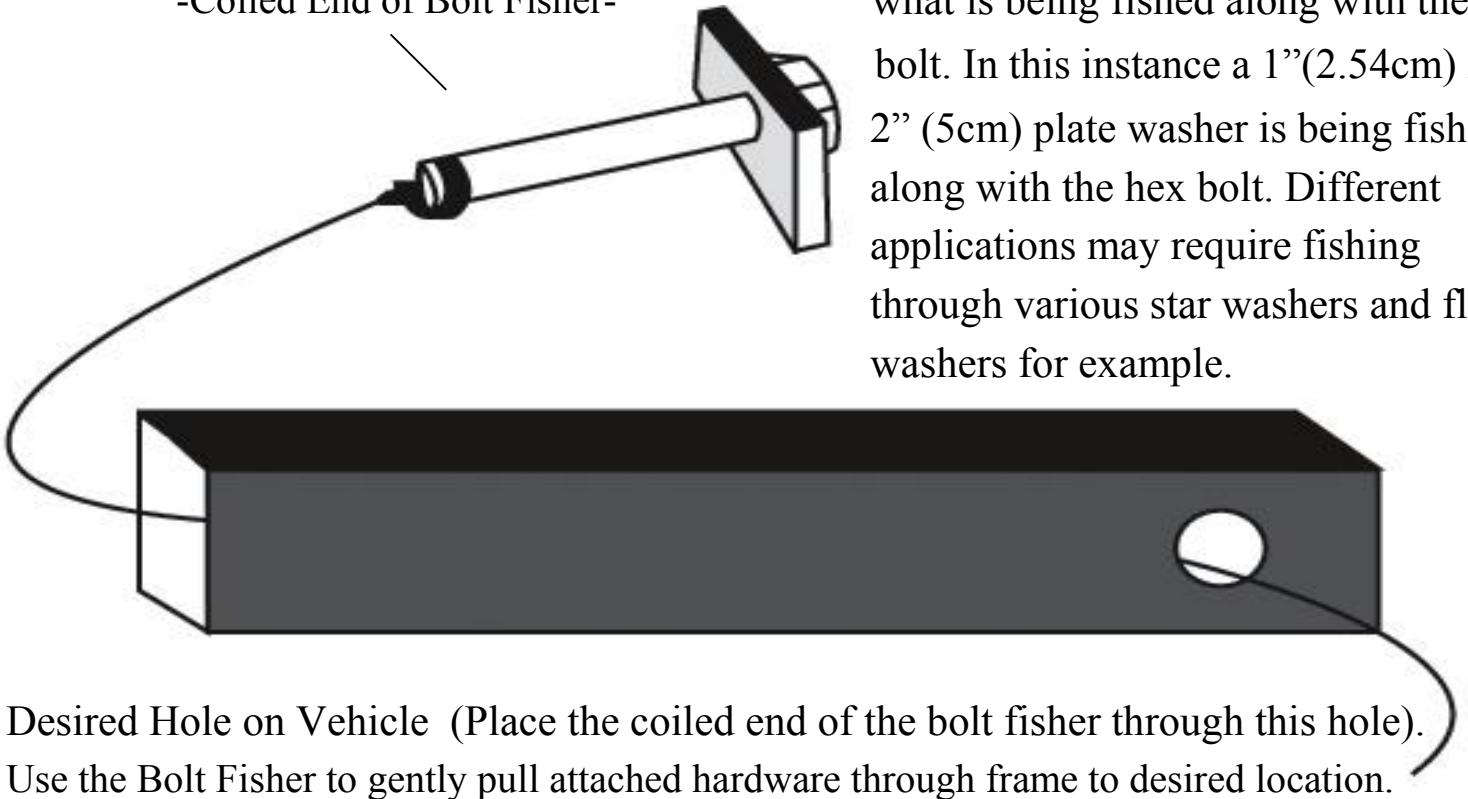


TORKLIFT'S BOLT FISHING GUIDE

Your guide to understanding the installation of our frame mounted tie downs.

Note: The hardware may vary as to what is being fished along with the bolt. In this instance a 1”(2.54cm) X 2” (5cm) plate washer is being fished along with the hex bolt. Different applications may require fishing through various star washers and flat washers for example.

-Coiled End of Bolt Fisher-



TIEDOWN INSERT INSTALLATION INSTRUCTIONS

On one end of each of your tie down inserts is a triangular plate referred to by Torklift as a bullet plate. Your tie down inserts should be installed with the shorter side of the bullet plate facing away from each other, i.e.. The shorter side of the front insert should point to the front of the truck and the shorter side of the rear insert should point towards the rear of the truck.

Once installed, attach the TorkLift directional stickers to the face of the bullet plate on the insert as a reminder.

DRIVERS SIDE FRONT



DRIVERS SIDE REAR



IMPORTANT NOTE: *Your tie down inserts are designed to have clearance inside of the receiver. This is to account for road debris, as well as aid in installation and removal. Some rattle may be expected if the inserts are left installed while not under load from the camper.*

RECOMMENDED TRUCK CAMPER

INSTALLATION INSTRUCTIONS

When securing any heavy load (especially a camper) in your truck bed, your front tie down points should pull the load forward as much as possible. Some camper anchor points may differ with different manufacturers, as well as the camper jack mounting locations. Your Torklift tie down inserts has offset triangular brackets to increase the angle of pull. These are designed to be used in the front facing forward, and the rear facing rearward but can be used in either front or rear. These recommendations are to be considered and followed as a basic rule of thumb. Obviously there will be some applications where this may not be possible. At a minimum, if opposite pull of both front and rear tie downs cannot be achieved for whatever reason, you should have at least a forward pull at the front or rear location.

If your camper does not come with Rubber Bumpers on the front lower portion of the camper, installing Rubber Bumpers (Torklift has Rubber Bumpers available Part A7001) or using a block of wood such as a 2 x 4 in the bed, will prevent the camper from damaging the front bulk head of the truck bed.

Minor movement (or settling) can occur in some incidental harsh driving conditions (on or off road). A rubber bed mat is not a requirement to maintain the lifetime warranty on a Torklift system, but a strong recommendation simply as a safety precaution to protect the truck bed, the bottom of the camper and to give the camper additional support.

TORKLIFT DOES NOT RECOMMEND: Installing your truck camper in your truck on top of a drop in plastic bed liner!!! The drop in plastic bed liners can slide on top of the truck bed surface, and the camper can slide on top of the slick surface of the bed liner. The liner can also act as a spring causing a trampoline effect increasing vertical truck camper movement, independent of the vehicle, possibly resulting in truck bed, and camper damage!

INSTRUCTIONS FOR FINISH MAINTENANCE

OF TORKLIFT PRODUCTS

POWDER COATED STEEL:

To keep your Torklift products looking good follow these guidelines. All steel powder coated Torklift products are sandblasted for maximum adhesion and use a high quality industrial urethane based powder coat. Due to the extreme, harsh, undercar environment that your Torklift products live in, (consistently sprayed with corrosive road chemicals such as salt, and road debris), Torklift does not warranty the power coated finish.

To minimize corrosion from these factors on powder coated steel products, Torklift recommends regularly cleaning and inspecting the powder-coated surface and touching up any affected areas with enamel or urethane based aerosol paint product. If there are any areas of surface rust, there are also aerosol spray rust converters available on the market that can be used as a preparation to touch-up paint application. These finish maintenance products are available at any automotive parts supplier.

POLISHED STAINLESS STEEL:

Torklift utilizes quality grade 304 stainless steel in our stainless steel polished products. 304 stainless steel is well known for its anti-corrosive properties. However, in some environments such as coastal regions or when coming in contact with some road chemicals, corrosion may occur.

For a quick clean simply use WD40 and a cloth rag. We also recommend occasional polishing of our polished stainless products to maintain their attractive finish. Use an approved stainless steel chrome or aluminum mag wheel polish cleaning product, which can be purchased from any automotive parts supplier.