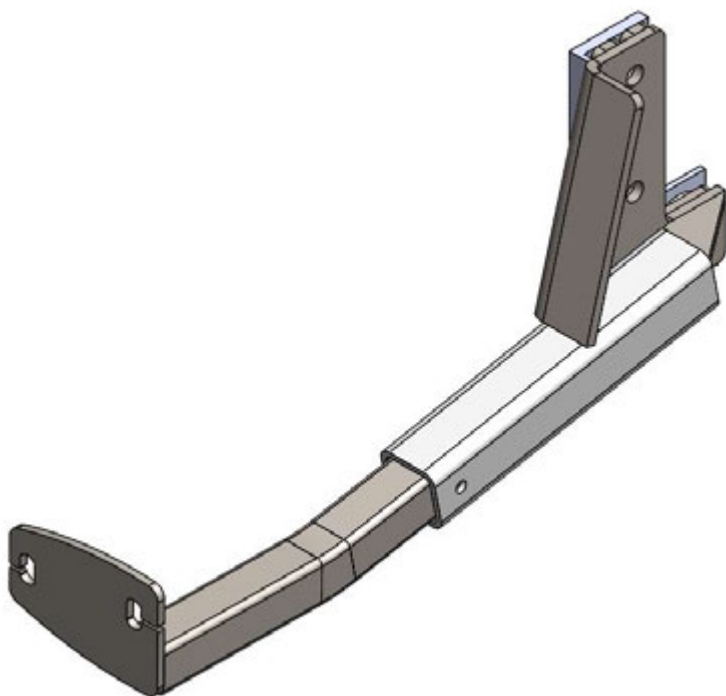




OVER 35 YEARS OF INNOVATION, QUALITY, SAFETY.
IMPORTANT OWNER-OPERATOR INSTALLATION INSTRUCTIONS

Part F3007



Warnings

Truck Bed and Camper Protection

Torklift **does not** recommend installing your camper on top of a plastic bed liner (or other compressible material such as foam). These materials can act as a spring, causing increased vertical truck camper movement independent of the vehicle. Plastic bed liners can slide on the truck bed surface, and the truck camper can slide on top of the bed liner. Using a plastic bed liner or similar compressible material will void your warranty and may additionally cause truck bed and/or camper damage.








Minor movement or settling can occur in some incidental harsh driving conditions (on or off-road). A rubber bed mat is recommended to protect the truck bed and camper, but is not a requirement to maintain the Torklift legendary lifetime warranty.

Suspension

To significantly reduce body roll, sag and sway Torklift strongly recommends the StableLoad. Torklift International StableLoads improve safety, handling, and to help level your truck.

If your truck is additionally equipped with suspension air bags Torklift cautions against over pressurization as this may lead to unsafe vehicle handling characteristics. We have found that airbags used in conjunction with StableLoads have allowed operators to lower air bag pressure by 50% or more. Only pressurize suspension air bags enough to level the truck.

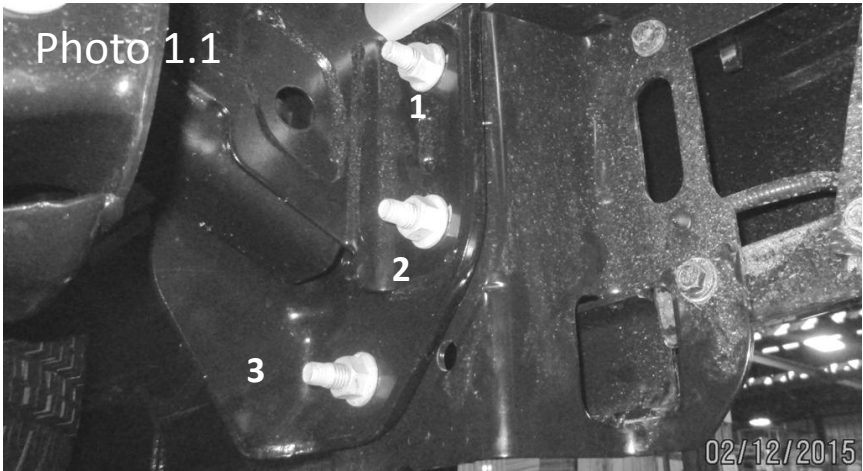
Parts Inventory

Item Image	Item Description	Quantity
	<u>Tie Down Receiver</u>	2
	Spacer Plate	2
	Bent Tie Down Insert	2
	1/2" x 2.25"OD Fender Washer	2
	M14-2.0 x 60mm Grade 10.9 Hex Bolt	6
	1/2" USS Flat Washer	12
	9/16 Lock Washer	6
	M14-2.0 Grade 10.9 Hex Nut	6
	1/4" Bail Pin	2

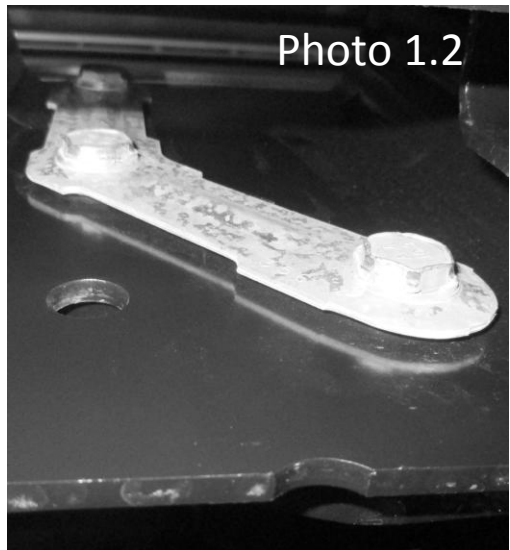
Installation Notes: It will be necessary to remove the two bolt plates holding the factory hitch and bumper to the vehicle frame. It is important to only install one tie down receiver at a time, leaving the factory bolt plate tight on the other side of the vehicle. This will hold the bumper and hitch in place.

Step 1:

Begin on the passenger side of the vehicle by removing the three factory 22mm Hex Nuts as shown. (Photo 1.1)



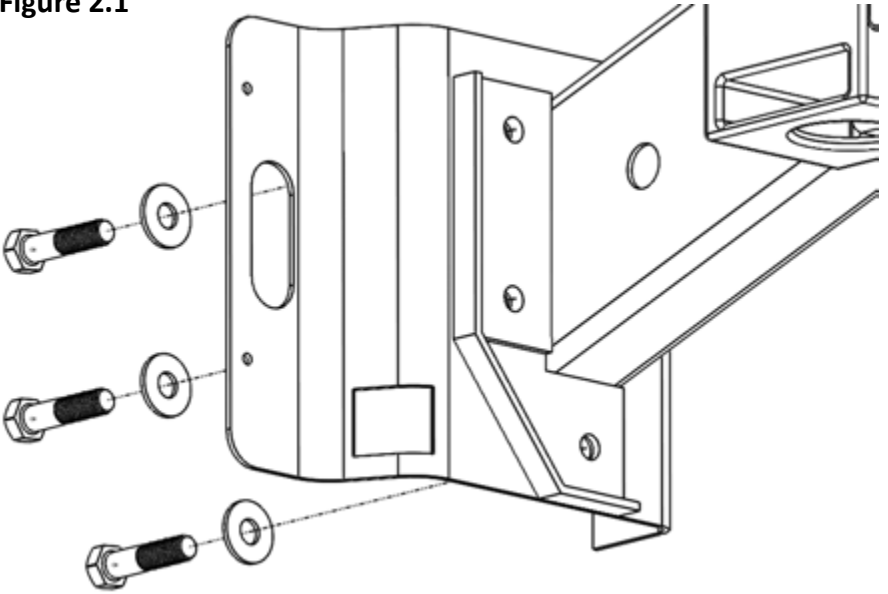
Once the nuts are removed, it is necessary to either pry or lightly and evenly hammer out the factory bolt plate. The bolt plate may be pried using a screw driver on the bolt head side, or lightly tapped through from the threaded side with a hammer. (Photo 1.2)



Step 2:

Install one **M14 x 60mm Hex Bolt** with one **1/2" Flat Washer** through each of the three holes in the hitch and frame. The threads should face the front of the truck exactly like the factory bolt plate removed in step one. (Figure 2.1)

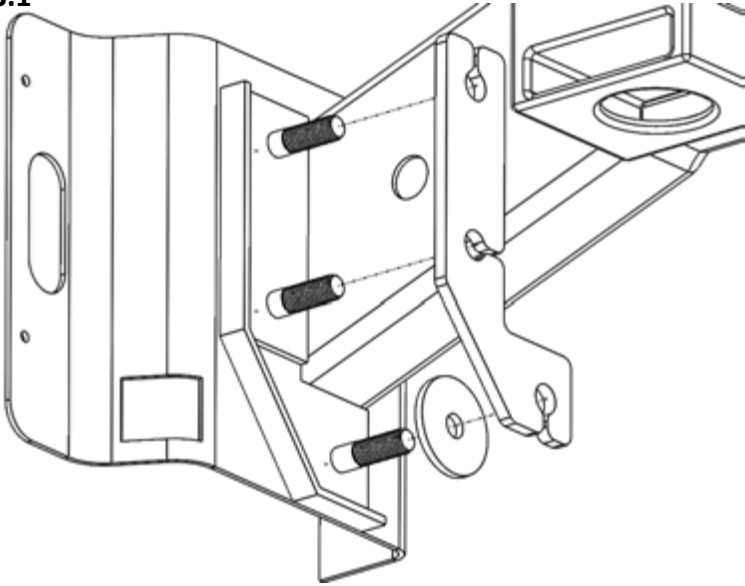
Figure 2.1



Step 3:

Install one **1/2" Fender Washer** onto the protruding threads of the lower most bolt. Next, install one of the supplied **Spacer Plates** over the top of the fender washer and onto the protruding threads of all three **M14 Hex Bolts**. (Figure 3.1)

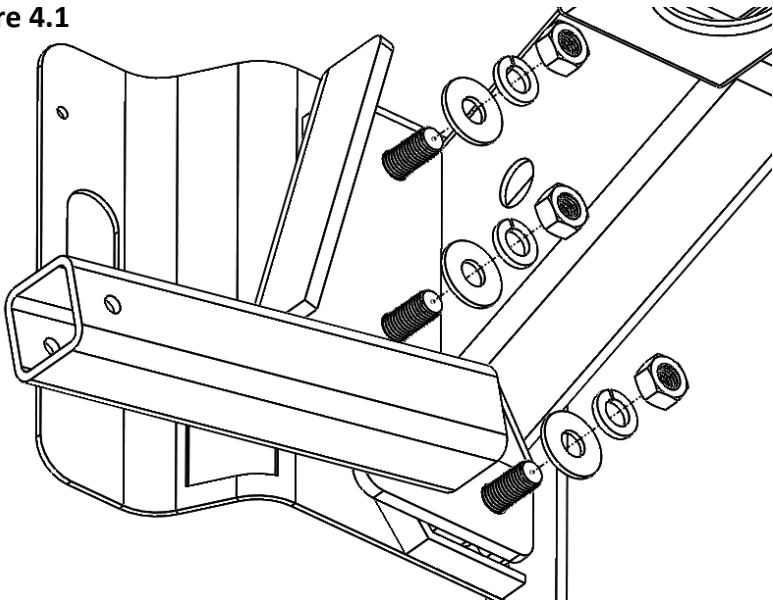
Figure 3.1



Step 4:

Install the passenger side **Tie Down Receiver** over the **Spacer Plate** and onto the protruding threads of the three **M14 Hex Bolts**. Secure the receiver with one **1/2 Flat Washer**, one **9/16" Lock Washer**, and one **M14 Hex Nut** for each of the three bolts. Leave hand tight at this time. (Figure 4.1)

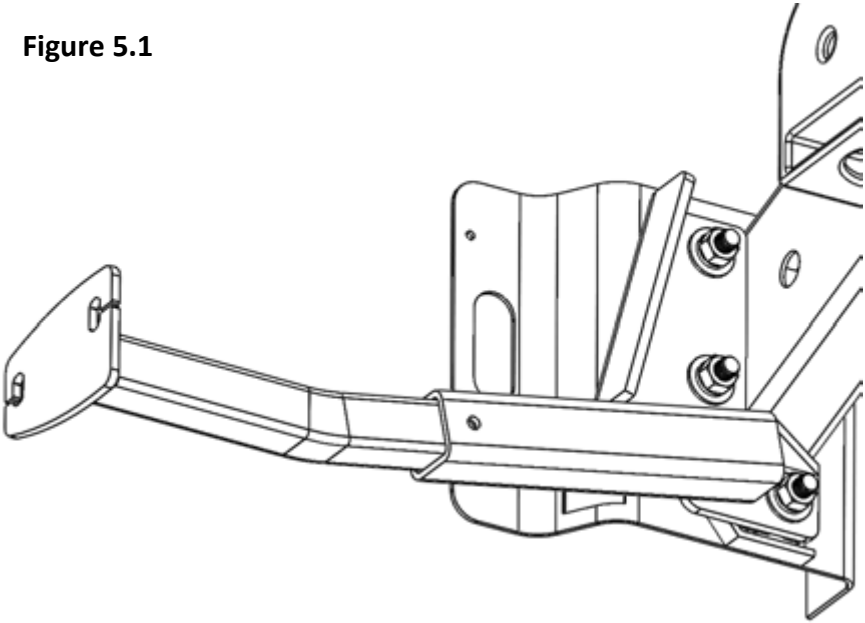
Figure 4.1



Step 5:

Evenly tighten the three **M14 Hex Nuts** and torque each to 120 ft-lbs (162Nm). Install the **bent tie down insert** and secure with a **1/4" Bail Pin**. (Figure 5.1)

Figure 5.1



Step 6:

Repeat Steps 1-5 for the driver side tie down installation.

TIEDOWN INSERT INSTALLATION INSTRUCTIONS

On one end of each of your tie down inserts is a triangular plate referred to by Torklift as a bullet plate. In most cases, the tie down inserts should be installed with the shorter side of the bullet plate facing away from each other, i.e.. The shorter side of the front insert should point to the front of the truck and the shorter side of the rear insert should point towards the rear of the truck.

DRIVERS SIDE FRONT



DRIVERS SIDE REAR



Once installed, attach the TorkLift directional stickers to the face of the bullet plate on the insert as a reminder.

IMPORTANT NOTE: *Your tie down inserts are designed to have clearance inside of the receiver. This is to account for road debris, as well as aid in installation and removal. Some rattle may be expected if the inserts are left installed while not under load from the camper.*