



**OVER 35 YEARS OF INNOVATION, QUALITY, SAFETY.**



**TRUE FRAME MOUNTED  
CAMPER TIE DOWNS**

**IMPORTANT OWNER-OPERATOR INSTALLATION INSTRUCTIONS**

**T2309**

# Warnings

## Truck Bed and Camper Protection

Torklift **does not** recommend installing your camper on top of a plastic bed liner (or other compressible material such as foam). These materials can act as a spring, causing increased vertical truck camper movement independent of the vehicle. Plastic bed liners can slide on the truck bed surface, and the truck camper can slide on top of the bed liner. Using a plastic bed liner or similar compressible material will void your warranty and may additionally cause truck bed and/or camper damage.

Minor movement or settling can occur in some incidental harsh driving conditions (on or off-road). A rubber bed mat is recommended to protect the truck bed and camper, but is not a requirement to maintain the Torklift legendary lifetime warranty.

## Suspension

To significantly reduce body roll, sag and sway Torklift strongly recommends the StableLoad. Torklift International StableLoads improve safety, handling, and to help level your truck.

If your truck is additionally equipped with suspension air bags Torklift cautions against over pressurization as this may lead to unsafe vehicle handling characteristics. We have found that airbags used in conjunction with StableLoads have allowed operators to lower air bag pressure by 50% or more. Only pressurize suspension air bags enough to level the truck.

# **T2309 PARTS INVENTORY**

- |  |                              |
|--|------------------------------|
| 4 - <a href="#">STAR WASHER</a> 1/2"     | 4- HEX BOLT 1/2"-13 X 1-1/4" |
| 2- HEX BOLT 1/2"-13 X 5-1/2"             | 1- 1/2" BOLT FISHER          |
| 6- HEX NUT WITH SERRATED FLANGE 1/2"-13  | 2- SNAPPER PIN 1/4" X 2 1/4" |
| 2- RECEIVER                              | 2- HOOK BRACKET              |
| 2- INSERT 16-1/2"(42cm) SPECIAL STRAIGHT | 2- DRIVER/PASSENGER STICKER  |

## **INSTALLATION INSTRUCTIONS:**

### **READ AND UNDERSTAND ALL INSTRUCTIONS BEFORE STARTING:**

#### **STEP 1)**

Starting out on the Drivers side of the frame locate the front Spring Perch under the bed. Locate the Spring Bolt inserted through the Spring Perch and rear leaf suspension. Using the 1/2" BOLT FISHER, insert the coiled end through the first hole just above the Spring Bolt, going through the frame and out the bottom of the frame. On the coiled end of the bolt fisher, place a HEX BOLT 1/2"-13 X 1-1/4" and a STAR WASHER 1/2" on the end and fish it back through the frame and out the original hole. Slide the 1/2" BOLT FISHER open end through the hole next to the support gusset and string through until the bolt is through the hole in the RECEIVER. Remove the 1/2" BOLT FISHER and place a HEX NUT WITH SERRATED FLANGE 1/2"-13 onto the end of the bolt. Hand Tighten (SEE PHOTO A, B, C, D, E)

**\*\*Repeat Step 1 for the next hole above the support gusset\*\***

#### **STEP 2)**

Locate one HOOK BRACKET and place a HEX BOLT 1/2"-13 X 5-1/2" through the pipe. (SEE PHOTO F) Next, Place the Hook bracket and bolt on the inside of the frame and move it over until it is directly over the last remaining hole in the RECEIVER. (SEE PHOTO G, H) Place a HEX NUT WITH SERRATED FLANGE 1/2"-13 and tighten to 35 FT. LBS.

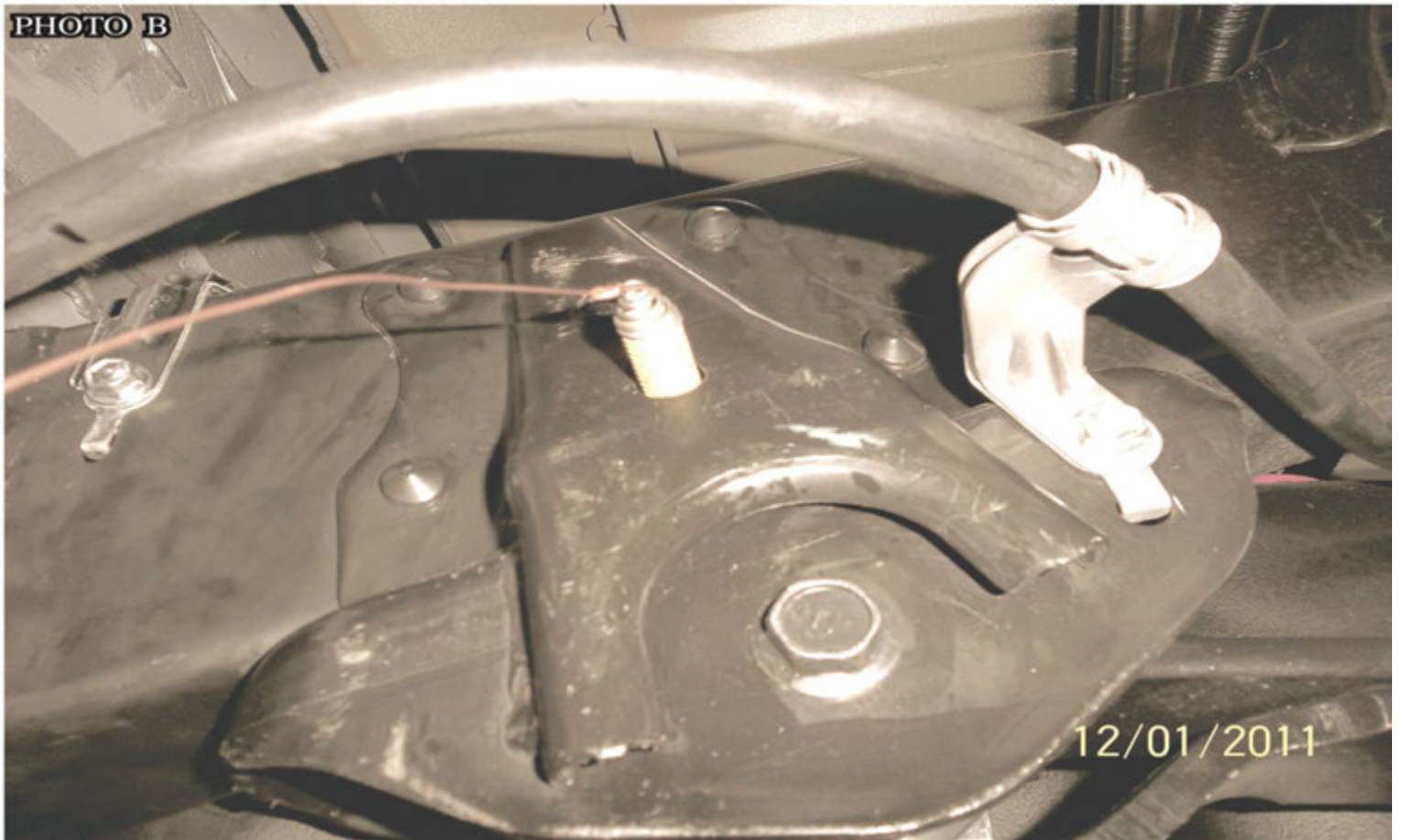
**Tighten all fasteners to 55 FT.LBS(74nm) unless otherwise noted.**

**Repeat Steps 1-2 for install on opposite side.  
(Completed Installation PHOTO I)**

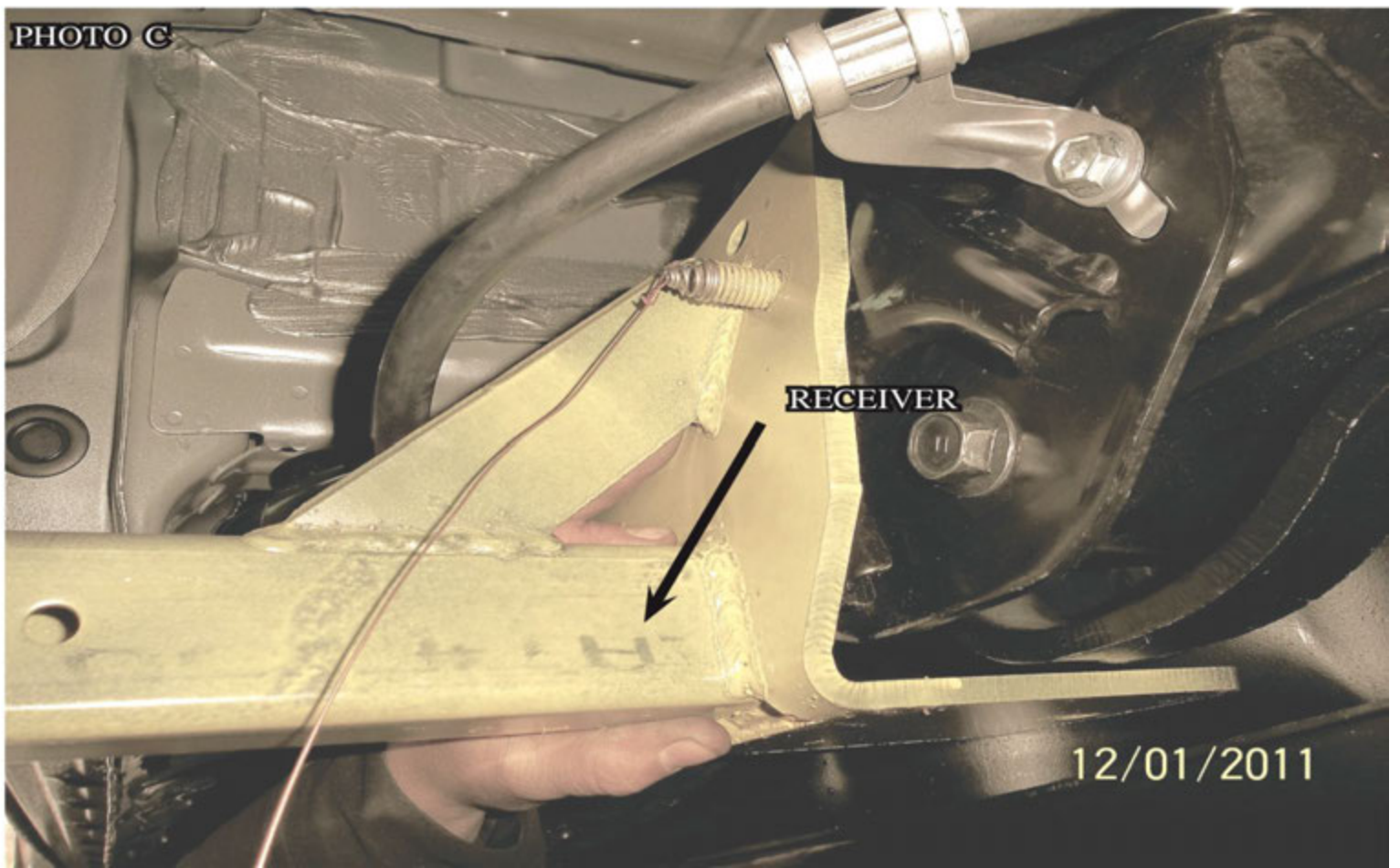
**PHOTO A**



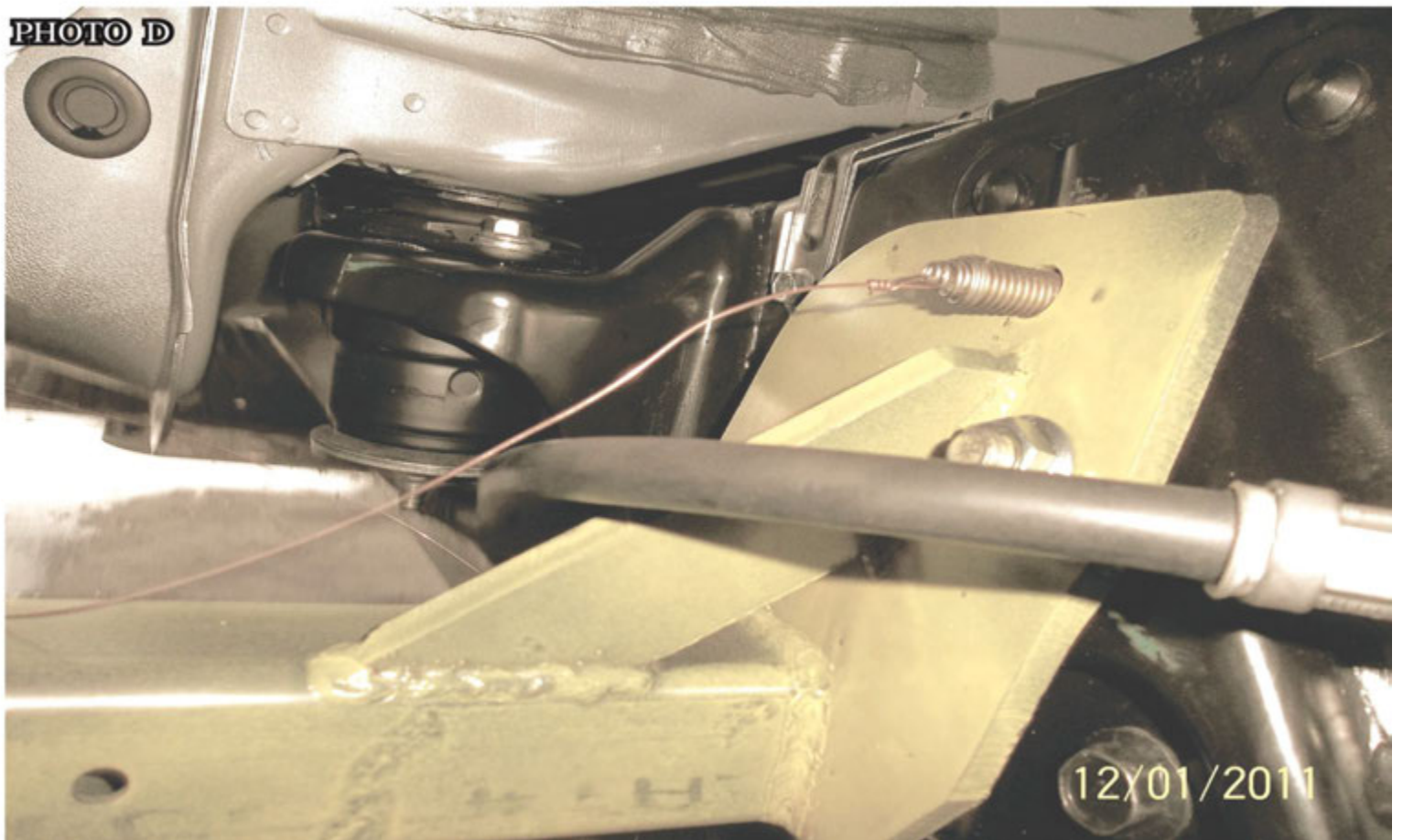
**PHOTO B**



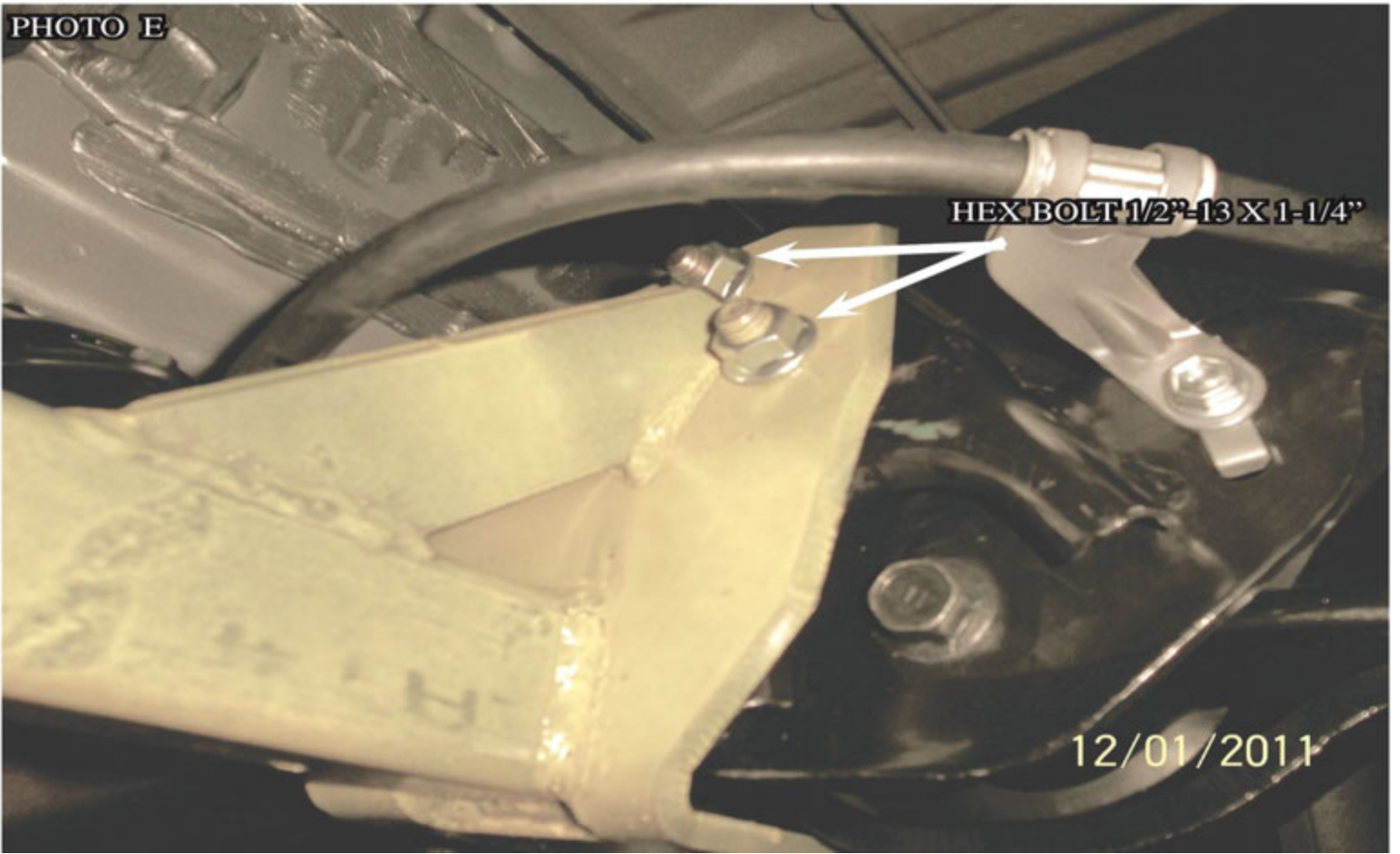
**PHOTO C**



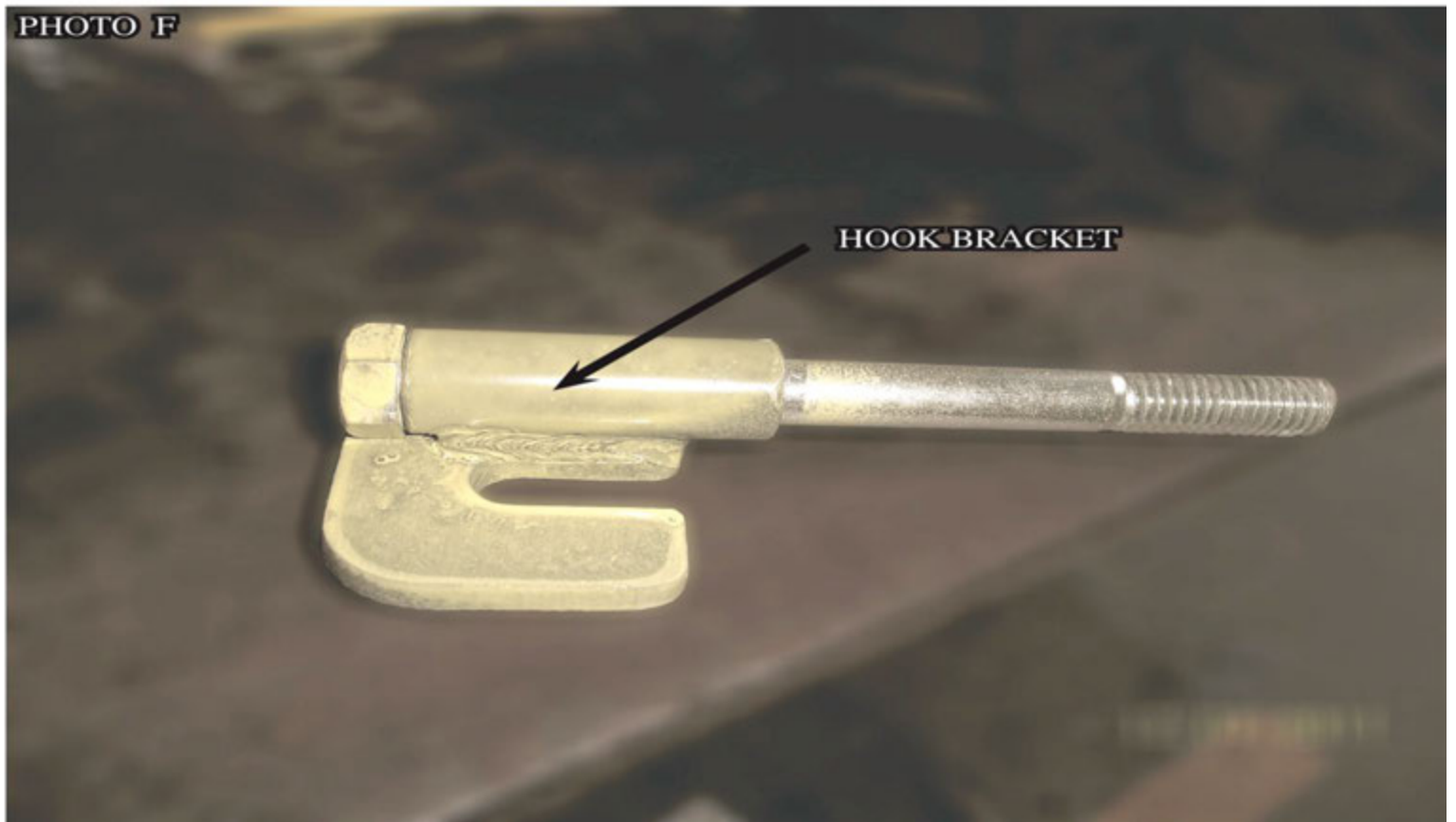
**PHOTO D**



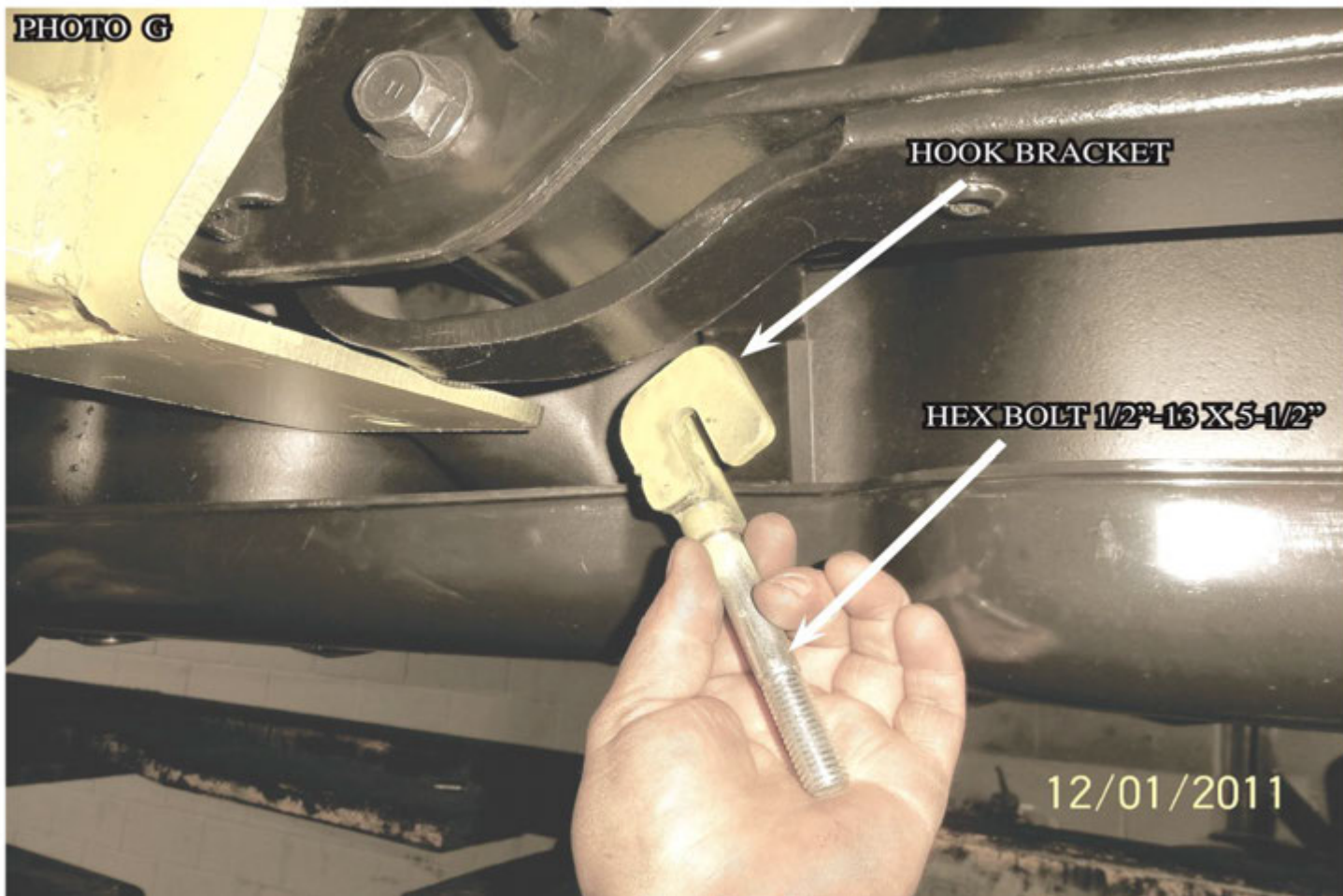
**PHOTO E**



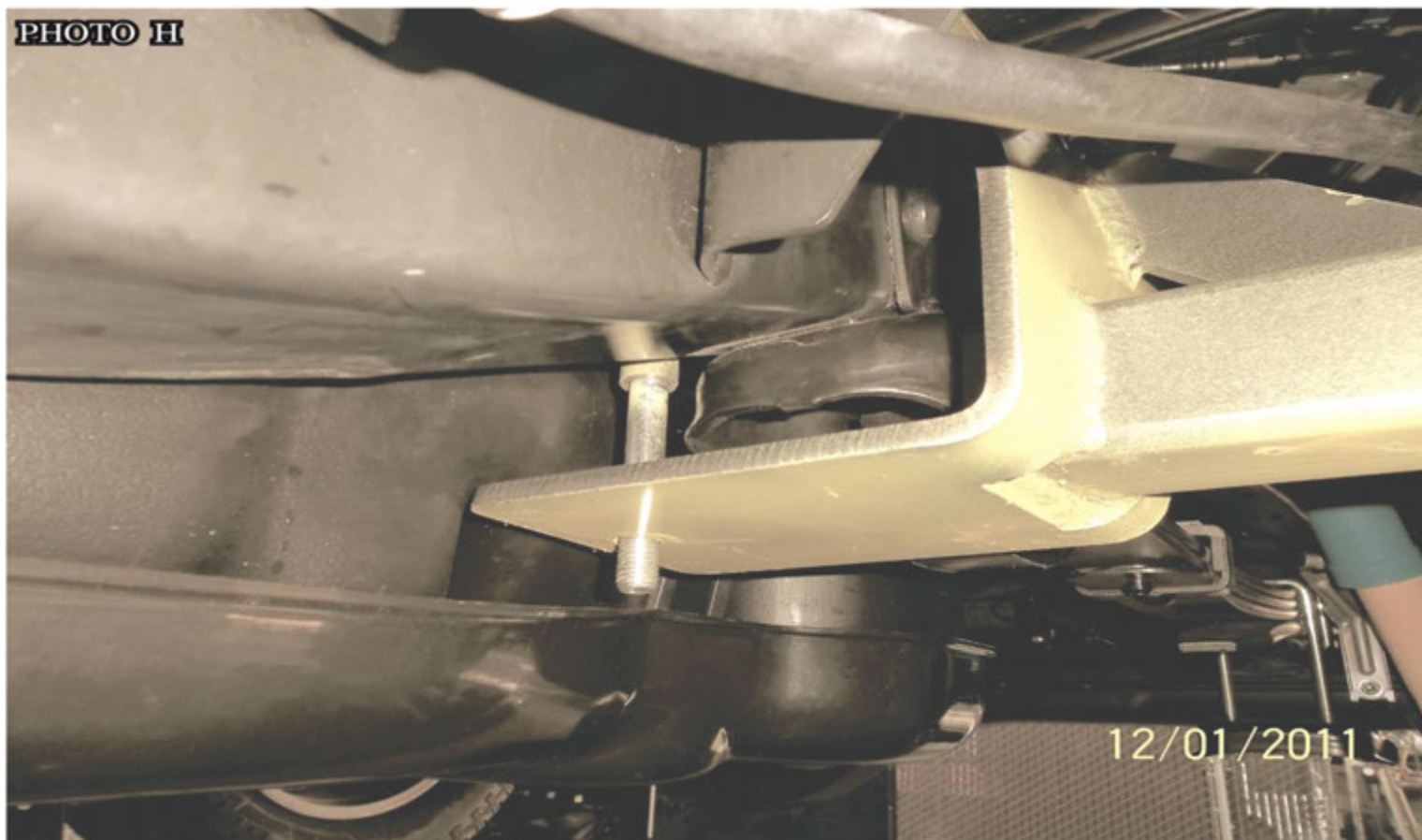
**PHOTO F**



**PHOTO G**



**PHOTO H**



**PHOTO I**



# **INSTRUCTIONS FOR MAINTENANCE OF POLISHED STAINLESS STEEL PRODUCTS**



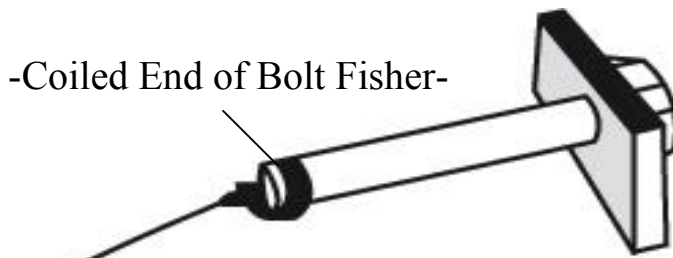
**Torklift utilizes quality grade 304 stainless steel in this product.**

**304 stainless steel is well known for its anti corrosive properties, however in some environments such as coastal regions or when in contact with some road chemicals, corrosion may occur.**

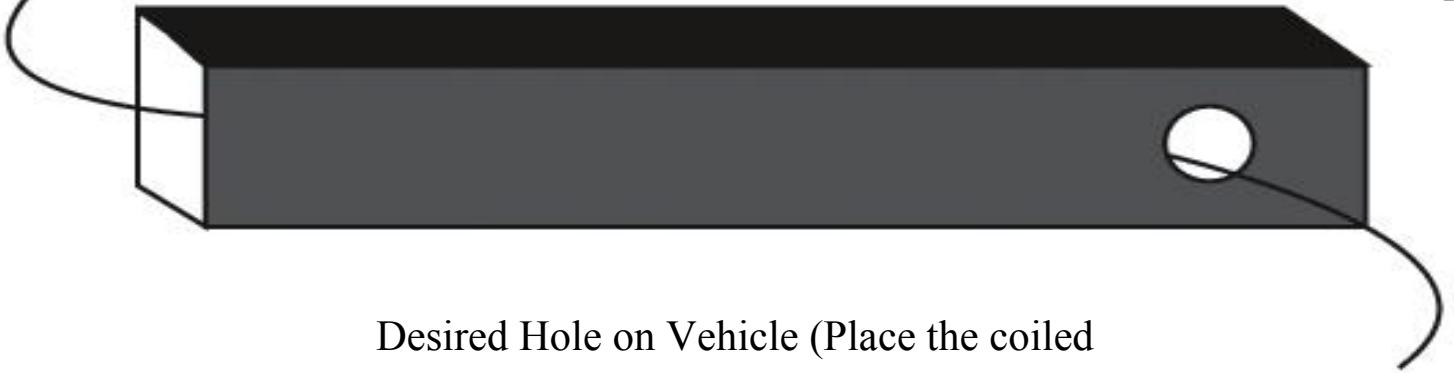
**We recommend occasional polishing of our product to maintain its attractive finish. Use an approved stainless steel cleaning/polishing product, which can be purchased from any automotive supplier.**

# TORKLIFT'S BOLT FISHING GUIDE

Your guide to understanding the installation of our frame mounted tie downs.



Note: The hardware may vary as to what is being fished along with the bolt. In this instance a 1" X 2" plate washer is being fished along with the hex bolt. Different applications may require fishing through various star washers and flat washers for example.



Desired Hole on Vehicle (Place the coiled end of the bolt fisher through this hole).

This side of the Bolt Fisher should come out of a hole where the required hardware (for example 1" X 2" plate washer) can pass through.



This bottom example shows the bolt when it's completely fished through the vehicle. You may find it easier to keep the bolt fisher attached until you get the tie down receiver in place so that the bolt doesn't fall into the vehicle frame.

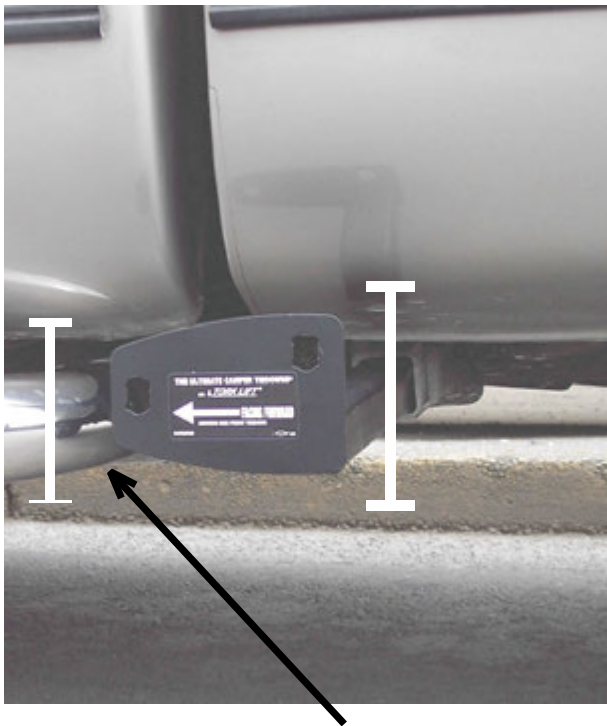
**WARNING: PULLING TOO HARD ON THE BOLT FISHER CAN RESULT IN LOST FASTENERS, OR BROKEN BOLT FISHER.**

# ***TIEDOWN INSERT INSTALLATION INSTRUCTIONS***

***On one end of each of your tie down inserts is a triangular plate referred to by Torklift as a bullet plate. Your tie down inserts should be installed with the shorter side of the bullet plate facing away from each other, i.e.. The shorter side of the front insert should point to the front of the truck and the shorter side of the rear insert should point towards the rear of the truck.***

***Once installed, attach the TorkLift directional stickers to the face of the bullet plate on the insert as a reminder.***

## ***DRIVERS SIDE FRONT***



## ***DRIVERS SIDE REAR***



## ***SHORTER SIDE***

***IMPORTANT NOTE: Your tie down inserts are designed to have clearance inside of the receiver. This is to account for road debris, as well as aid in installation and removal. Some rattle may be expected if the inserts are left installed while not under load from the camper.***

# **RECOMMENDED TRUCK CAMPER INSTALLATION INSTRUCTIONS**

When securing any heavy load (especially a camper) in your truck bed, your front tie down points should pull the load forward as much as possible. Some camper anchor points may differ with different manufacturers, as well as the camper jack mounting locations. Your Torklift tie down inserts has offset triangular brackets to increase the angle of pull. These are designed to be used in the front facing forward, and the rear facing rearward but can be used in either front or rear. These recommendations are to be considered and followed as a basic rule of thumb. Obviously there will be some applications where this may not be possible. At a minimum, if opposite pull of both front and rear tie downs cannot be achieved for whatever reason, you should have at least a forward pull at the front or rear location.

If your camper does not come with Rubber Bumpers on the front lower portion of the camper, installing Rubber Bumpers (Torklift has Rubber Bumpers available Part A7001) or using a block of wood such as a 2 x 4 in the bed, will prevent the camper from damaging the front bulk head of the truck bed.

Minor movement (or settling) can occur in some incidental harsh driving conditions (on or off road). A rubber bed mat is not a requirement to maintain the lifetime warranty on a Torklift system, but a strong recommendation simply as a safety precaution to protect the truck bed, the bottom of the camper and to give the camper additional support.

**TORKLIFT DOES NOT RECOMMEND:** Installing your truck camper in your truck on top of a drop in plastic bed liner!!! The drop in plastic bed liners can slide on top of the truck bed surface, and the camper can slide on top of the slick surface of the bed liner. The liner can also act as a spring causing a trampoline effect increasing vertical truck camper movement, independent of the vehicle, possibly resulting in truck bed, and camper damage!

## **INSTRUCTIONS FOR FINISH MAINTENANCE OF TORKLIFT PRODUCTS**

### **POWDER COATED STEEL:**

To keep your Torklift products looking good follow these guidelines. All steel powder coated Torklift products are sandblasted for maximum adhesion and use a high quality industrial urethane based powder coat. Due to the extreme, harsh, undercar environment that your Torklift products live in, (consistently sprayed with corrosive road chemicals such as salt, and road debris), Torklift does not warranty the power coated finish.

To minimize corrosion from these factors on powder coated steel products, Torklift recommends regularly cleaning and inspecting the powder-coated surface and touching up any affected areas with enamel or urethane based aerosol paint product. If there are any areas of surface rust, there are also aerosol spray rust converters available on the market that can be used as a preparation to touch-up paint application. These finish maintenance products are available at any automotive parts supplier.

### **POLISHED STAINLESS STEEL:**

Torklift utilizes quality grade 304 stainless steel in our stainless steel polished products. 304 stainless steel is well known for its anti-corrosive properties. However, in some environments such as coastal regions or when coming in contact with some road chemicals, corrosion may occur.

For a quick clean simply use WD40 and a cloth rag. We also recommend occasional polishing of our polished stainless products to maintain their attractive finish. Use an approved stainless steel chrome or aluminum mag wheel polish cleaning product, which can be purchased from any automotive parts supplier.