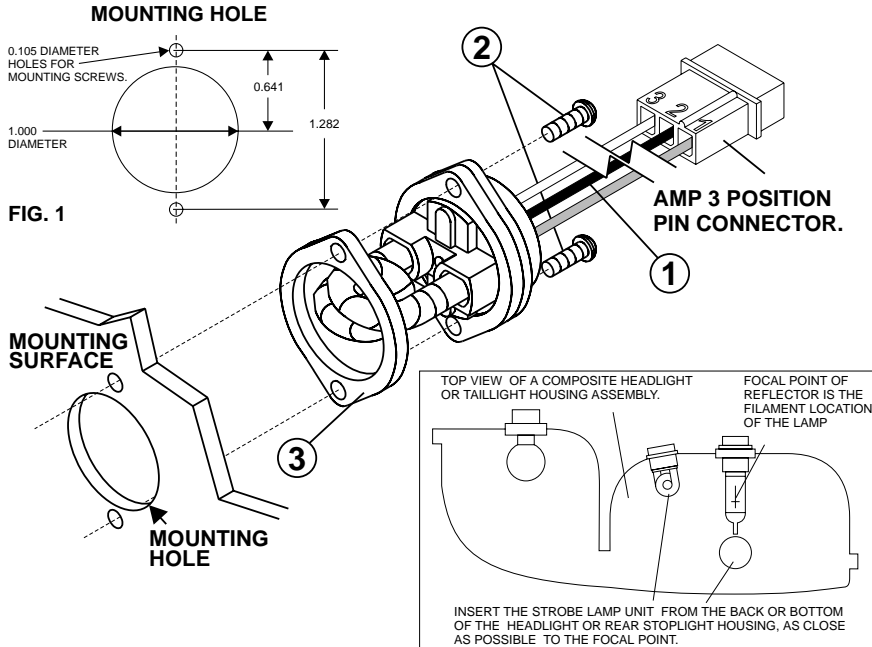




## Installation of Model 8370 [Strobe Light](#) into a composite automotive headlight/taillight assembly

**WARNING: High Voltage on glass tube. This strobe lamp unit is an open flash tube with no protective lens. Proper installation is required. Do not touch the strobe tube assembly while in operation.**



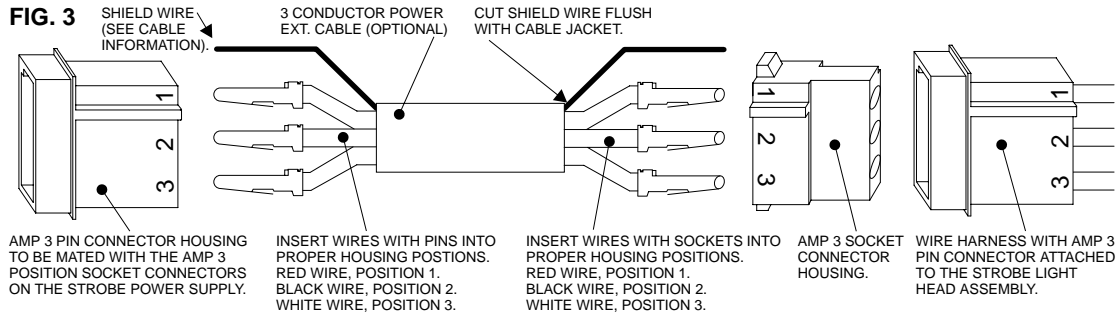
### INSTALLATION OF A STROBE LIGHT INTO A COMPOSITE AUTOMOTIVE HEADLIGHT OR TAILLIGHT ASSEMBLY:

1. Select the mounting location for the strobe light head, keeping in mind the following:
  - The strobe light will share the same reflector as the headlight, brake light, or signal light. Make sure that the strobe light does not interfere with the proper operation of these lights (Fig. 2).
  - There must be a minimum of 1 (one) inch of space between the strobe light and the lens.
  - The strobe light must not be installed above the horizontal centerline of the reflector.
  - The strobe light must not be installed above any OEM-supplied light.
2. Remove the "Composite" reflector assembly from the vehicle. Choose a surface in the rear or bottom of the housing which is as flat as possible. Using a 1 in. hole saw, cut a clearance hole for the strobe light in the housing as shown in figure 1. Using the strobe light head assembly as a template, mark the location of the two holes for the two mounting screws.

**CABLE INFORMATION** On each end of the optional 3 conductor power cable is a shield wire. Cut this wire on the end connected to the strobe light head assembly so that it is flush with the cable jacket. The shield wire on the cable-end to be connected to the strobe power supply is to be grounded to the vehicle chassis when radio or other communication system interference is a problem. If this shield wire is not grounded, cut it flush with cable jacket. KEEP THIS WIRE AS SHORT AS POSSIBLE WHEN GROUNDING.

**NOTE:** For radio frequency interference protection, it is advisable to ground the shield wire on the power supply end. **NOTE:** Whelen strobe light systems are designed to interface with the Whelen UPS strobe light power supply. Detailed wiring, switching and installation instructions are enclosed with the UPS unit.

**WARNING:** When connecting the AMP connector housing to the AMP pins and sockets located on the 3 conductor cable, OBSERVE THE COLOR OF THE WIRES TO BE CONNECTED TO PIN NUMBER POSITIONS as indicated in figure 3.



**WARNING:** All customer supplied wires, that connect to the positive (+) terminal of the battery, must be sized to supply at least 125% of the maximum operating current, and fused "at the battery" to carry the load!

**WARNING:** The Strobe Light Power Supply is a high voltage device. Do not remove strobe tubes or dismantle strobe light head assembly while in operation. WAIT 10 MINUTES after turning off power before starting work or any trouble shooting.

**IMPORTANT!** The 8370 is NOT recommended for use with 90 Watt power supplies.

**IMPORTANT!** Modification of your vehicle's reflector housings may void your vehicle warranty. Check with dealer/supplier before installation.

**Signal-Stat**<sup>®</sup>  
Lighting and Safety Products