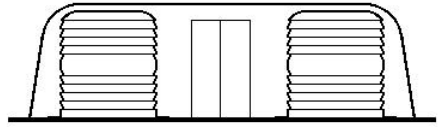
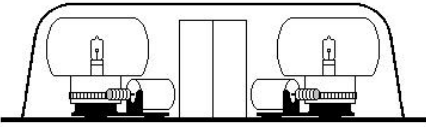




INSTALLATION INSTRUCTIONS FOR MINIBARS 92520, 92522, and 92524 Series



92524 Series

92520 and 92522 Series

<u>Model</u>	<u>Voltage</u>	<u>Current Draw</u>	<u>Light Source</u>	<u>Total Candlepower</u>	<u>Flash Rate</u> <u>Light Source/Minibar</u>
92524	12 VDC	8 Amps	50 Watt Halogen Bulb	140,000 cp	95FPM/380FPM
92520	12-24 VDC	2 Amps	9.3-Joule Strobe Head	930,000 cp	65DFPM (130FPM)/520FPM
92522	12-24 VDC	2 Amps	17.7-Joule Strobe Head	1,770,000 cp	85QFPM (340FPM)/1360FPM

1. **IMPORTANT:** Please read all of the following instructions before installing your new warning light. This instruction sheet applies only to the models listed at the top.
2. **CAUTION:** All of our DC powered warning lights are polarity sensitive. These lights are polarity protected *only if the appropriate fuse* is used. All wires connected to the positive terminal of the battery should be fused at the battery for their rated load. **Testing the light before this fuse is properly installed will void the warranty.**
3. Remove the dome from your mini-bar. Take care not to damage the gasket. Place the light in the exact position it is to be mounted.
4. Using the base as a template, mark four holes on the mounting surface. Take care to ensure that the base does not move while you are marking each of the four holes.
5. Remove the base and drill a 3/8" hole in the four marked spots.
CAUTION: Take care not to drill through the headliner below.
6. Push the enclosed rubber well nuts through the holes until the bottom side of the wider lip rests on the surface of the vehicle.
7. *For external wiring of your new mini-bar skip to Step 8. For internal wiring, proceed as follows:* Remove the headliner from the inside of the vehicle. Draw two diagonal lines between the well nuts in the opposite corners. Mark the location at which they cross. Drill a 3/8" hole in the center marked location. Place the light on the surface of the vehicle, routing the wires through the hole. Align the four other holes with the well nuts, install the screws, and tighten until snug. Skip to Step 9.
8. *For external wiring,* place the light on the mounting surface and align the holes with the well nuts. Install the screws and tighten until snug.
9. Replace the dome on your mini-bar.
10. The black wire is the ground lead and should be connected to a good chassis ground.
11. Connect the red wire to the positive side of the power supply through your switch. *Be sure to use the appropriate fuse based upon the current draw shown on the chart above and to check the label on the warning light and switch for proper voltage.*
12. **Photocell feature for the 92520 AND 92522 only:** The strobe version of our minibar contains a photocell that will automatically switch the minibar to low power at night.