

READ ALL INSTRUCTIONS BEFORE BEGINNING INSTALLATION

INSTALLATION INSTRUCTIONS

- 1- REMOVE THE EXISTING SUN VISOR.
- 2- FASTEN TOGETHER BOTH SUN VISOR PANELS, ENSURING THAT THE PASSENGER SIDE IS ON TOP OF THE DRIVER SIDE.
- 3- INSTALL THE BRACKET ON SUN VISOR AS ILLUSTRATED.
- 4- PLACE SUN VISOR WITH BRACKETS ONTO THE CAB, HOLD IN PLACE WITH DUCT TAPE. BRACKETS SHOULD SIT FLUSH ON CAB.
- 5- MARK BRACKET HOLES ON CAB.

CAUTION

REMOVE SUN VISOR TO PREVENT DAMAGE.

- 6- DRILL BRACKET HOLES AT $\phi \frac{1}{2}$ " ($\phi .5$ ") AND INSERT WELLNUTS.
- 7- TEMPORARILY INSTALL THE SUN VISOR ONTO THE CAB.
- 8- AT BOTH ENDS REMOVE DOOR GASCKETS AND PUSH THE SIN VISOR IN PLACE AND MARK HOLES IN DOOR FRAME.

CAUTION

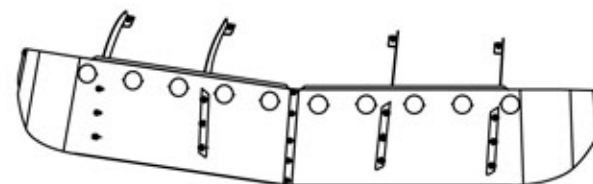
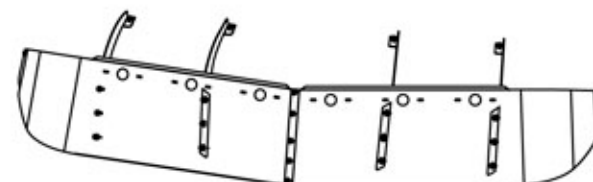
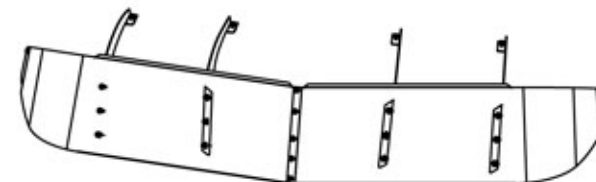
REMOVE SUN VISOR TO PREVENT DAMAGE.

- 9- DRILL DOOR FRAME HOLES AT $\phi \frac{1}{2}$ " ($\phi .5$ ") AND INSERT WELLNUTS.
- 10- IF THERE IS NO LIGHT SKIP TO STEP #14
- 11- INSTALL THE LIGHTS ON SUN VISOR.
- 12- CONNECT THE LIGHTS AND DIRECT WIRE TOWARDS CENTER.
- 13- FASTEN THE SUN VISOR AS ILLUSTRATED.

CAUTION

IT IS THE RESPONSABILITY OF THE INSTALLER TO PLAN AHEAD THE ADEQUATE ELECTRICAL CONNECTION ACCORDING TO THE STANDARDS OF THE TRUCK MANUFACTURER AND DOT REGISTRATION.

- 14- REINSTALL THE SUN VISOR ON THE CAB.
- 15- CONNECT LIGHTS HARNESS TO THE TRUCK.
- 16- TIGHTEN ALL BOLTS AND SCREWS FIRMLY.

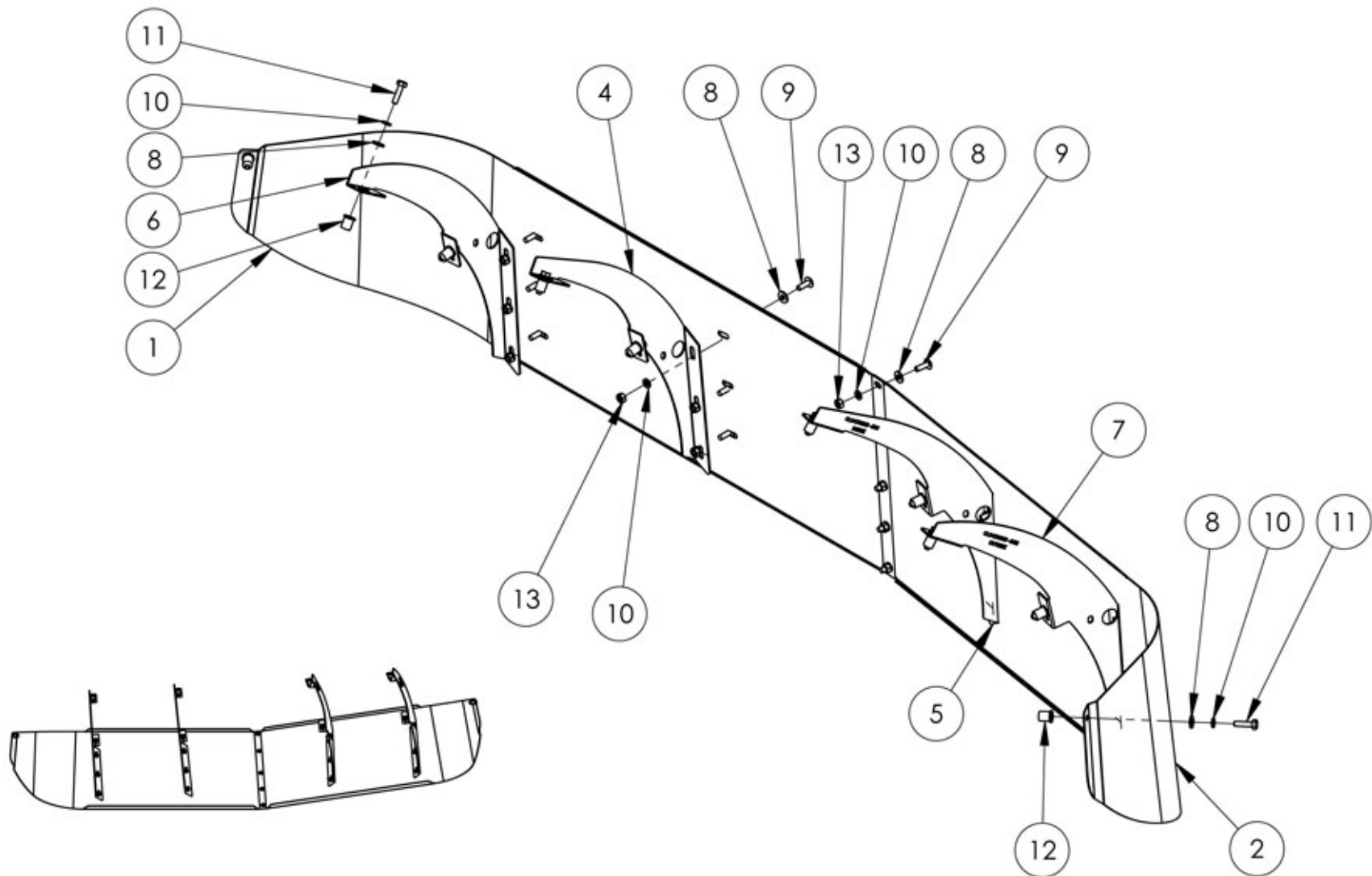


TRUX ACCESSORIES

TITLE:
SUN VISOR (12" DROP)
INTERNATIONAL 4000 SERIES 2002 & UP

SIZE DWG. NO.
A **TSUN-I10, I11 & I12**

NAME	DATE	REV	DATE
	-	PH1	-
SCALE: 1:8	WEIGHT: LBS	SHEET: 1 OF 1	



ITEM NO.	PART NO.	PART NO.	PART NO.	DESCRIPTION	QTY
1	M7431009SG	M7431026SG	M7431027SG	PANNEAU DU PARE-SOLEIL	1
2	M7431009SD	M7431026SD	M7431027SD	PANNEAU DU PARE-SOLEIL	1
3	K7431009BH	-	-	HARDWARE KIT INCLUDES:	1
4	-	-	-	PR9431003-G01	1
5	-	-	-	PR9431003-D01	1
6	-	-	-	PR9431003-G02	1
7	-	-	-	PR9431003-D02	1
8	-	-	-	FLAT WASHER 1/4"	27
9	-	-	-	TRUSS PHILIPS 1/4"-20NCX3/4"SS	17
10	-	-	-	LOCK WASHER 1/4" SS	27
11	-	-	-	HEX. BOLT 1/4NC X 1	10
12	-	-	-	WELL NUT 1/4"-20NC	10
13	-	-	-	HEX NUT 1/4-20NC	17

TRUX ACCESSORIES			
TITLE: SUN VISOR (12" DROP)			
INTERNATIONAL 4000 SERIES 2002 & UP			
SIZE	DWG. NO.		
A	TSUN-I10, I11 & I12		
NAME	DATE	REV	DATE
		PH1	
SCALE: 1:8		WEIGHT: LBS	SHEET: 1 OF 1

TRUX provides the best in sunroof visors and deflectors equipment.