



**Installation Manual
2019 Ram 1500 4wd
2" front leveling kit
Part # 32105**

SS09062018

Part # 32105
2019 Ram 1500 4wd (will not fit Air ride models)
2" front leveling kit

<i>Part #</i>	<i>Description</i>	<i>Qty.</i>
32105-01	Aluminum Strut spacer	2
32105INST	Instruction Manual	1

Congratulations on your selection to purchase a Tuff Country EZ-Ride Suspension System. We at Tuff Country EZ-Ride Suspension are proud to offer a high quality product at the industries most competitive pricing. Thank you for your confidence in us and our product.

The Tuff Country EZ-Ride Suspension product safety label that is included in your kit box must be installed inside the cab in plain view of all occupants.

Make sure to use thread locker or loctite on all new and stock hardware associated with the installation of this suspension system.

After the completion of the installation, a front end alignment is required.

Important customer information:

Tuff Country EZ-Ride Suspension highly recommends that a qualified or a certified mechanic performs this installation.

It is the responsibility of the customer/installer to wear safety glasses at all times when performing this installation.

It is the customers/installers responsibility to read and understand all steps before installation begins. Also, the OEM manual should be used as a reference guide.

This vehicles reaction and handling characteristics may differ from standard cars and/or trucks. Modifications to improve and/or enhance off road performance may raise the intended center of gravity. Extreme caution must be utilized when encountering driving conditions which may cause vehicle imbalance or loss of control. **DRIVE SAFELY!** Avoid abrupt maneuvers: such as sudden sharp turns which could cause a roll over, resulting in serious injury or death.

It is the customers responsibility to make sure that a re-torque is performed on all hardware associated with this suspension system after the first 100 miles of installation. It is also the customers responsibility to do a complete re-torque after every 3000 miles or after every off road use.

After the original installation, Tuff Country EZ-Ride Suspension also recommends having the alignment checked every 6 months to ensure proper tracking, proper wear on tires and front end components. Tuff Country EZ-Ride Suspension takes no responsibility for abuse, improper installation or improper suspension maintenance.

IMPORTANT!

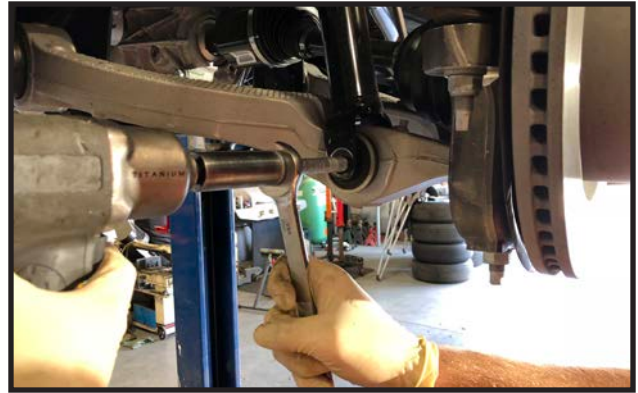
This kit will NOT work on vehicles equipped with Air Suspension. If your vehicle is equipped with this type of suspension, please contact the company you purchased the lift kit from and arrange for returning the parts.

1. To begin installation, block the rear tires of the vehicle so that the vehicle is stable and can't roll backwards. Safely lift the front of the vehicle and support both the driver and passenger side frame rail with jack stands. Remove the tires and wheels from both sides.

2. Remove the lower swaybar endlink mounting hardware at the lower control arm and save the hardware.



3. Remove the lower strut mounting hardware at the lower control arm and save the hardware.



4. Carefully remove the lower control arm mounting/adjusting bolts so that the lower control arm can be dropped out of its frame pockets. **Special Note: once these bolts are removed, the lower control arm and front suspension will be able to drop out quite a bit, be careful not to over extend any front brakelines or ABS wires.**



6. Move to the upper strut mounting hardware and remove the 3 nuts. Carefully lower the strut assembly out of the vehicle.



7. Place the strut assembly into a wall mounted strut compressor, and make a reference mark on the top hat so that it can be re-installed in the same direction. **Special Note: If you do not have a wall mounted strut compressor, you will need to take the struts and new strut spacers to a certified technician to perform these steps.**

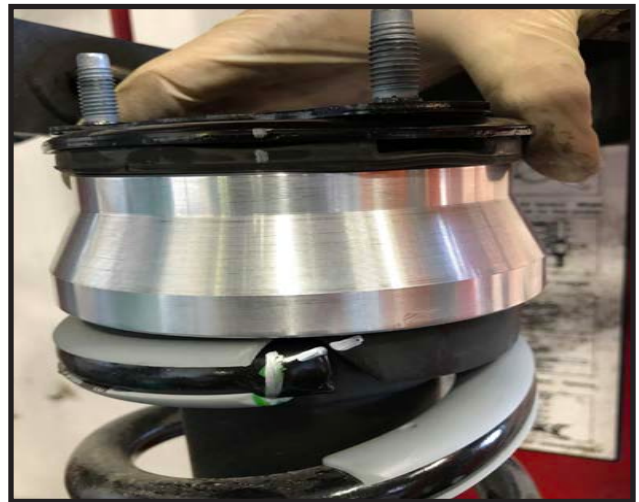


8. Carefully apply some pressure to the strut using the strut compressor, and remove the upper shock nut.

9. Lift the top hat off of the strut and set aside.



10. Install the new aluminum strut spacer on top of the coil spring. The order of pieces once installed are as follows: from the top down: OE top hat, OE rubber isolator, New factory strut spacer, OE dust shield, OE plastic spring lock.



11. Making sure to line up your reference marks from step #7, Carefully compress the strut assembly back together and re-install the OE nut. Torque to **30 ft lbs.**



12. Re-install the strut assembly into the vehicle and hold in place using the 3 OE nuts. **Do not tighten at this point.**



13. Raise the lower control arm up so that the lower strut mounting bolt can be re-installed but not tightened yet.

14. Re-install the lower control arm mounting/adjusting bolts and do not tighten yet.

15. Re-install the sway bar endlink lower mount and secure

using the OE hardware. Torque to **40 ft lbs.**

16. Move back to the 3 upper strut mounting hardware and torque to **30 ft lbs.**



17. Re-install the tires and wheels and carefully lower the vehicle back down to the ground.

18. Jounce the vehicle to get the suspension to settle at its new ride height.

19. Move back to the lower control arm mounting hardware and torque to **125 ft lbs. Set them in the center and they will be adjusted properly at the alignment shop.**

20. Move back to the lower strut mounting hardware and torque to **150 ft lbs.**

Congratulations, installation complete!

After the completion of this installation, Tuff Country EZ-Ride Suspension recommends taking the vehicle to an alignment shop and having the proper front end alignment performed.

Tuff Country Ez-Ride Suspension recommends that a complete re-torque is done on all the bolts associated with this suspension system. It is the customers responsibility to make sure that a re-torque is performed on all hardware associated with this suspension system after the first 100 miles of the installation. It is also the customers responsibility to do a complete re-torque after every 3000 miles or after every offroad use.