



VG-RR-2137BK

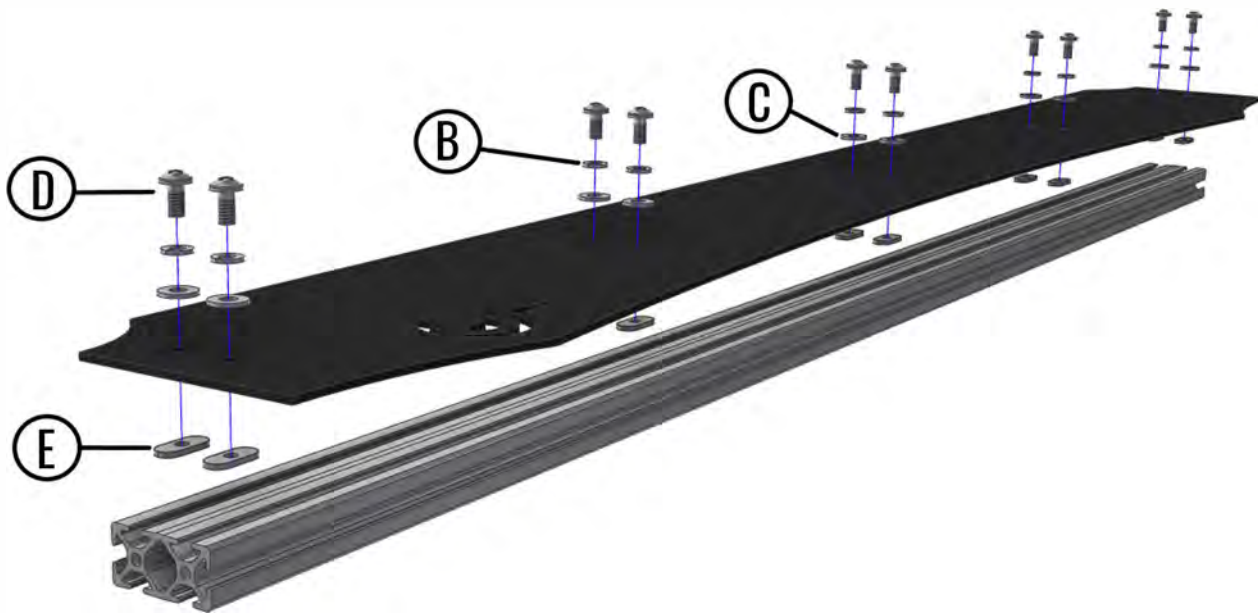




CROSSBAR HARDWARE DIAGRAM

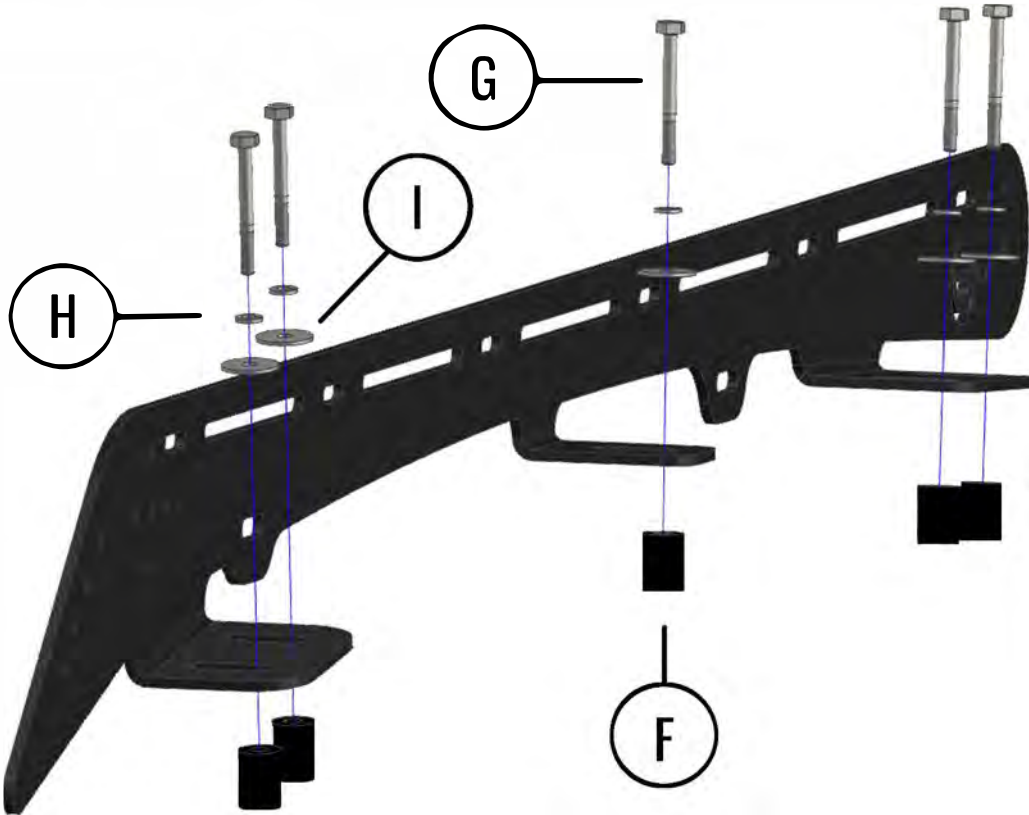


PART	DESCRIPTION	QUANTITY
A	1/4" - 20 x 1" MACHINE SCREW	28
B	1/4" LOCK WASHER	28
C	1/4" FLAT WASHER	28



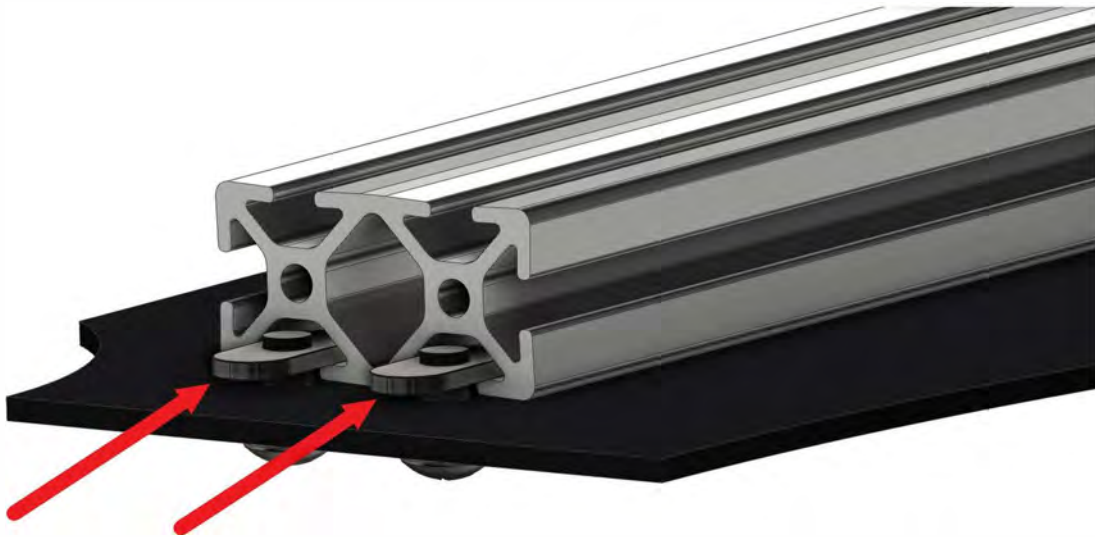
PART	DESCRIPTION	QUANTITY
B	1/4" LOCK WASHER	10
C	1/4" FLAT WASHER	10
D	1/4" - 20 x 1/2" PAN HEAD SCREW	10
E	1/4" - 20, 10 SERIES T-NUT	10

MOUNTING HARDWARE DIAGRAM



PART	DESCRIPTION	QUANTITY
F	3/4" x .319" x 1" SPACER (OD X ID X LENGTH)	10
G	M6-1.0 x 55MM HEX CAP SCREW	10
H	1/4" LOCK WASHER	10
I	1/4" X 1" FENDER WASHER	10

WIND DEFLECTOR ATTACHMENT



STEPS

1. INSTALL THE WIND DEFLECTOR HARDWARE AS SHOWN IN THE DIAGRAM ON PAGE 3. THREAD THE SCREWS JUST BARELY INTO THE T-NUTS TO BEGIN WITH.
2. LAY THE WIND DEFLECTOR ON A FLAT SURFACE IN THE ORIENTATION SHOWN ABOVE.
3. FROM ONE END START SLIDING THE EXTRUSION BAR SO THAT THE T-NUTS FEED INTO THE CHANNEL.
4. ONCE EVERYTHING IS LINED UP PROPERLY THEY WILL SLIDE RIGHT TOGETHER.
5. NOW WITH ALL THE T-NUTS FED INTO THE CHANNEL AND THE EXTRUSION BAR AND WIND DEFLECTOR LINED UP FLUSH AT BOTH ENDS, TURN THE ASSEMBLY OVER AND TIGHTEN THE SCREWS UNTIL THE LOCK WASHERS ARE FULLY COMPRESSED.
- 6 . THE WIND DEFLECTOR ASSEMBLY CAN NOW BE BOLTED TO THE ROOF RACK.

ROOF RACK INSTALLATION INSTRUCTIONS

***If you do not feel comfortable with the process outlined in this manual please seek professional installation assistance**

***Please read all instruction prior to beginning installation. Various steps may relate directly to previous or future parts of the installation process. Prinsu Design Studio is not liable for damages caused to your vehicle during the installation process**



locate the rubber weather trim on the roof



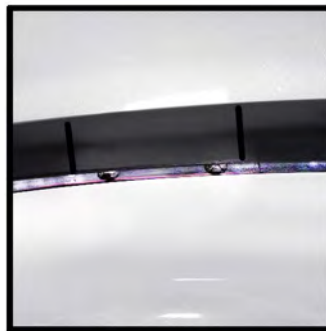
To remove start in the front and lift firmly working your way from front to back



The mounting holes are covered by adhesive stickers in the front middle and rear of the vehicle



You can either trim around the holes or remove the whole sticker



Next lay the trim parallel to where it was removed from and mark the area around the mounting holes to be removed



Alternately you can mark at the center of the holes if you wish to make exact holes for the spacers. This technique will be covered second



Continuing with the first technique remove the previously marked areas



Next add the trim back to the roof around the mounting holes



Middle mounting hole



Next apply silicone over the holes



Then place the spacers over the holes and silicone and press down making sure a good amount extends around the edge



You can now place the roof rack on your vehicle and fully tighten down



For the alternate trimming technique use an angle grinder or rotary tool to cut through



... center steel rib of the strip. You will make two vertical cuts approximately 1/2" from



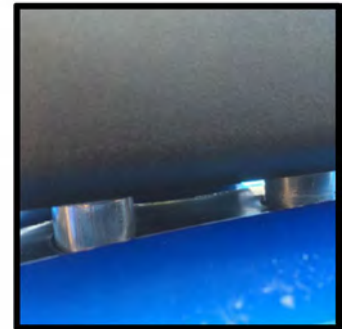
Remove the portion previously cut by making a horizontal cut between the two vertical cuts



Use a 3/4" hole saw or 3/4" drill bit to cut the holes for the aluminum spacers



Check the fitment on spacers



After installing the spacers with silicone as shown in the steps on the previous page re-install the weatherstripping



You can now place the roof rack on your vehicle and fully tighten down



Double check all fasteners to ensure tightness before your first drive



It is recommended to periodically check all fasteners for tightness...



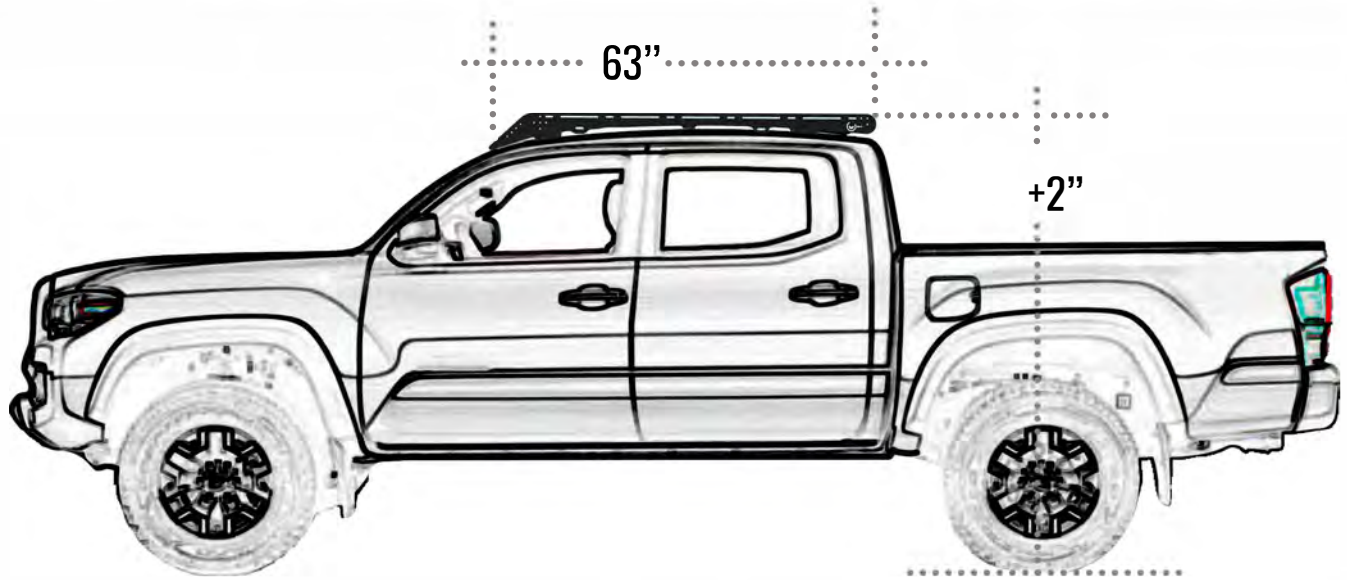
... This ensures the safety and full functionality of your roof rack



Installation is now complete



Enjoy your PRINSU roof rack!



FEATURE	MEASUREMENT/QUANTITY
OVERALL LENGTH	64"
SIDE RAIL HEIGHT*	2 1/8"
HEIGHT ADDED **	2"
CLEARANCE BETWEEN ROOF AND RACK	3/4"
WEIGHT	~ 38.5 LBS
47" CROSS BARS - BLACK - (1X2)	6
47" CROSS BAR - CLEAR - (1X2)	1

*AS MEASURED AT THE CENTER OF THE SIDE RAIL
**AS MEASURE FROM THE CENTER POINT OF THE ROOF