

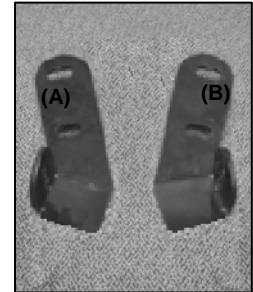
# INSTALLATION INSTRUCTIONS

PART#0454/1050/1175/0666

BULL BAR FOR RDX/CRV

## PARTS LIST:

1	Sport Bar	4	12-1.75mm x 35mm Hex Head Bolt
1	Driver Mounting Bracket (A)	4	12mm Nylock Nuts
1	Passenger Mounting Bracket (B)	8	12mm Flat Washer



## PROCEDURE:

- 1. REMOVE CONTENTS FROM BOX. VERIFY ALL PARTS ARE PRESENT. READ INSTRUCTIONS CAREFULLY.**
- Remove plastic shroud and place it on a working area. Using a hack saw; carefully cut the driver side marked area shown in Figure 5.
- Reposition factory plastic shroud with fasteners removed in step 2.
- Position Passenger Side Mounting Bracket as shown in Figure 2 and secure it with factory bolt removed in step 5. Do not tighten at this time.
- Repeat step 4 for driver side.
- Mount Sport Bar on the inner side of Mounting Brackets (Figure 4). Use the included (4) 12-1.75mm x 35mm Hex Head Bolts, (4) 12mm Nylock Nuts, and (8) 12mm Flat Washers to attach Sport Bar to both mounting brackets.
- Once the Sport Bar is fully mounted on vehicle, level and adjust Sport Bar; then tighten all hardware at this time.
- Do periodic inspections to the installation to make sure that all hardware is secure and tight.

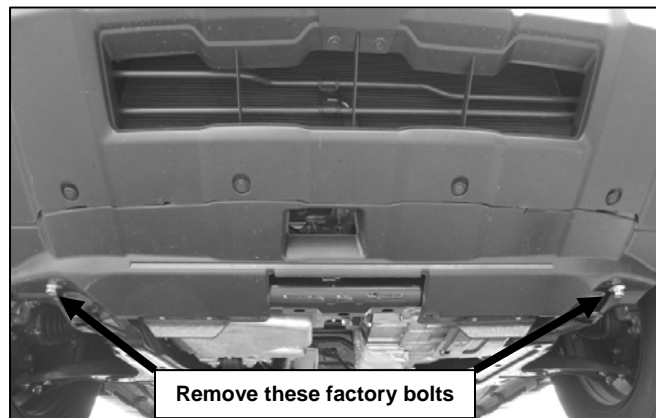
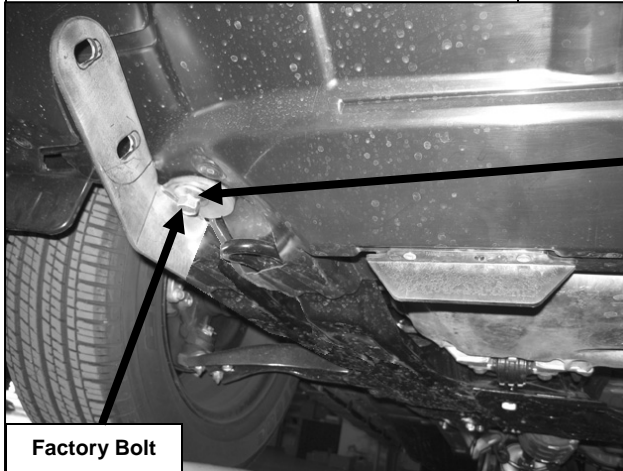


Figure 1

Passenger side with Mounting Bracket Shown



Factory Bolt

Figure 2

Driver side without Mounting Bracket Shown

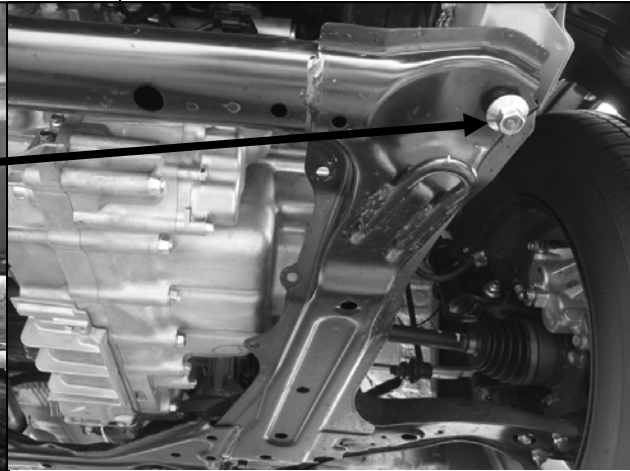
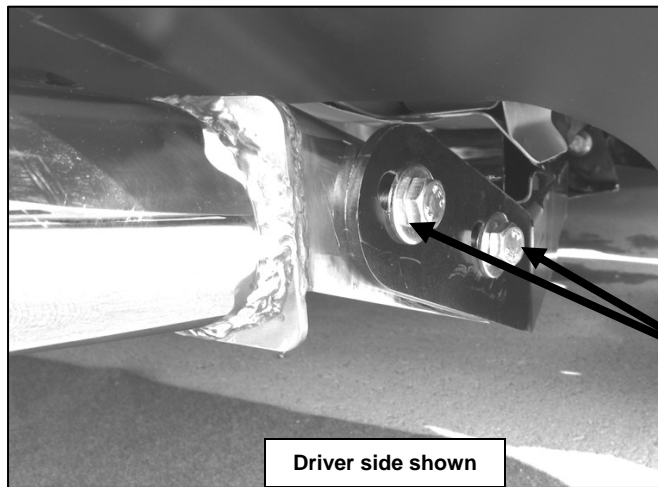


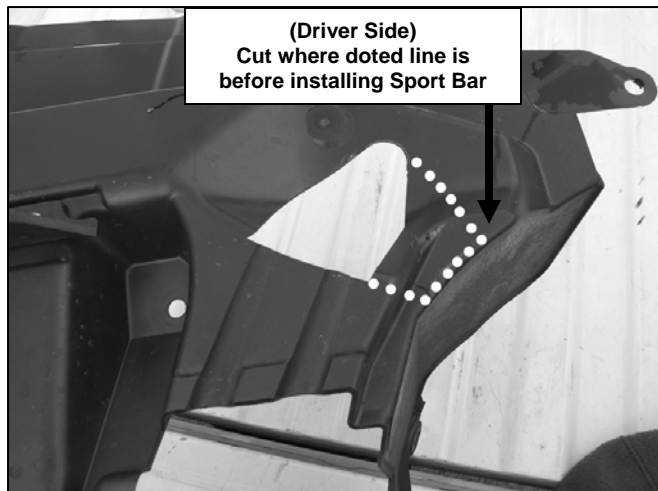
Figure 3



Driver side shown

Sport Bar Mounting Location  
(2) 12mm x 35mm Bolt, (4) Flat Washers, & (2) Nylock Nut

Figure 4



(Driver Side)  
Cut where dotted line is  
before installing Sport Bar

Figure 5