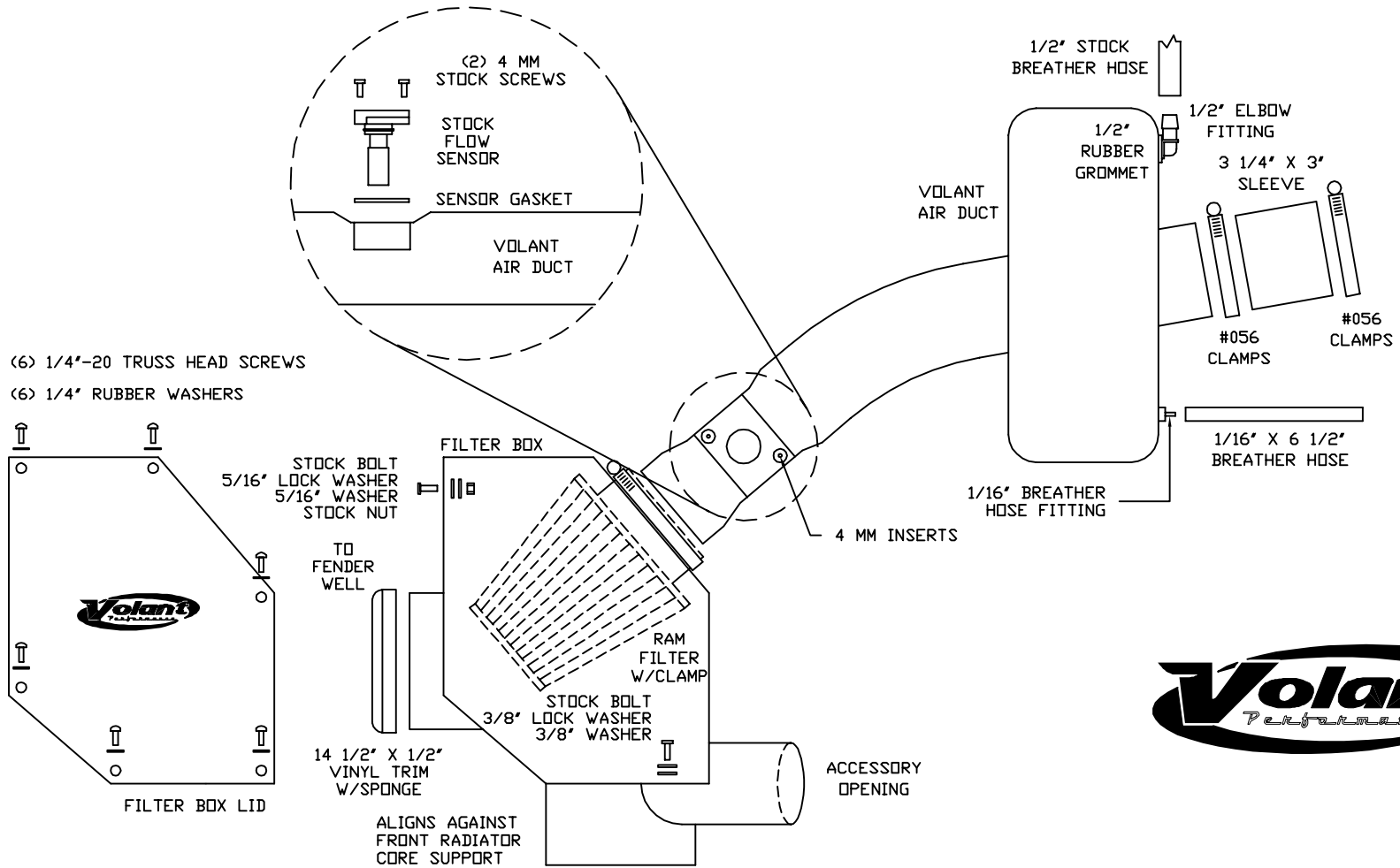


VOLANT COOL AIR INTAKES
 PART NO.: 15535
 INSTALLATION INSTRUCTIONS

T

15535 PARTS LIST

1	VOLANT FILTER BOX	1	3 1/4" X 3" SLEEVE	1	1/16" X 6 1/2" BREATHER HOSE
1	VOLANT FILTER BOX LID	1	5/16" LOCK WASHER	1	1/2" RUBBER GROMMET
1	VOLANT AIR FLOW DUCT	1	5/16" WASHER	1	SENSOR GASKET
1	RAM FILTER W/CLAMP	1	3/8" LOCK WASHER	1	14 1/2" X 1/2" VINYL TRIM
6	1/4"-20 TRUSS HEAD SCREWS	1	3/8" WASHER		
6	1/4" RUBBER WASHERS	1	1/2" ELBOW FITTING		
2	#056 CLAMPS	1	1/16" STRAIGHT FITTING		





READ INSTRUCTIONS THOROUGHLY BEFORE DISASSEMBLING. DO NOT SKIP ANY STEPS.

INSTALLATION INSTRUCTIONS PART NO. 15535

Installation Instructions:

1. Disconnect the negative battery cable.
2. Remove the MAF sensor from the factory air duct
3. Remove the air duct between the factory air box and resonator box.
4. Remove the air box mounting bolts and remove the air box.
5. Remove the bolts holding the resonator box on and loosen the clamp holding the box to the throttle body.
6. If you have a fuel pressure regulator remove the hose from the resonator box.
7. Remove the resonator box by pulling straight up.
8. Place the 14.5 trim on the volant box where it meets the fender.
9. Place the volant box into factory position and tighten down with the hardware provided.
10. Place the 3.25 sleeve onto the throttle body and tighten with a #48 clamp.
11. Press the volant duct into the sleeve and slide the filter through the air box and onto the duct and tighten the remaining clamps.
12. Replace the factory O-ring with the supplied one and tighten the sensor down with the hardware provided.
13. Attach the factory 1/2 breather hose to the volant elbow fitting.
14. Replace the factory 1/8 breather hose with the volant hose and press onto the regulator and the volant duct.
15. Reattach the negative battery cable.

WARNING: OVER TIGHTENING HARDWARE MAY ALTAR THE INTEGRITY OF THE VOLANT AIR INTAKE SYSTEM.

BEFORE ROAD TESTING

1. Start engine, leaving the transmission in park and securing the parking brake.
2. Make sure to look and listen for any unusual noises or air leaks. Repair problems if needed.
3. Once completed it will be necessary to check periodically for realignment and tightening of all connections.
4. Once all tests are completed, enjoy the performance of your new Volant Air Intake System.

CARE AND CLEANING

Check the cotton reusable filter periodically and remove any excessive dirt build-up by tapping the filter on the ground and brushing off the loosened dirt. Clean the filter by using Volant's Filter Recharger Kit. Volant's Filter Recharger Kit is designed to restore original air flow. Re-oil every 10,000 miles without cleaning to improve filtering in sand and dirt. Clean only when dirt is very excessive or 50,000 miles.

RECOMMENDED SERVICE PARTS

RECOMMENDED SERVICE PARTS	PART NO.
REPLACEMENT FILTER	5113
PREFILTER	51901
CLEANING KIT	5100

APPLICATION GUIDE

MY	MAKE	MODEL	ENG.
04-06	CHEVROLET	COLORADO	3.5L
04-06	GMC	CANYON	3.5L

INSTALL



Learn more about performance air intake systems we have.