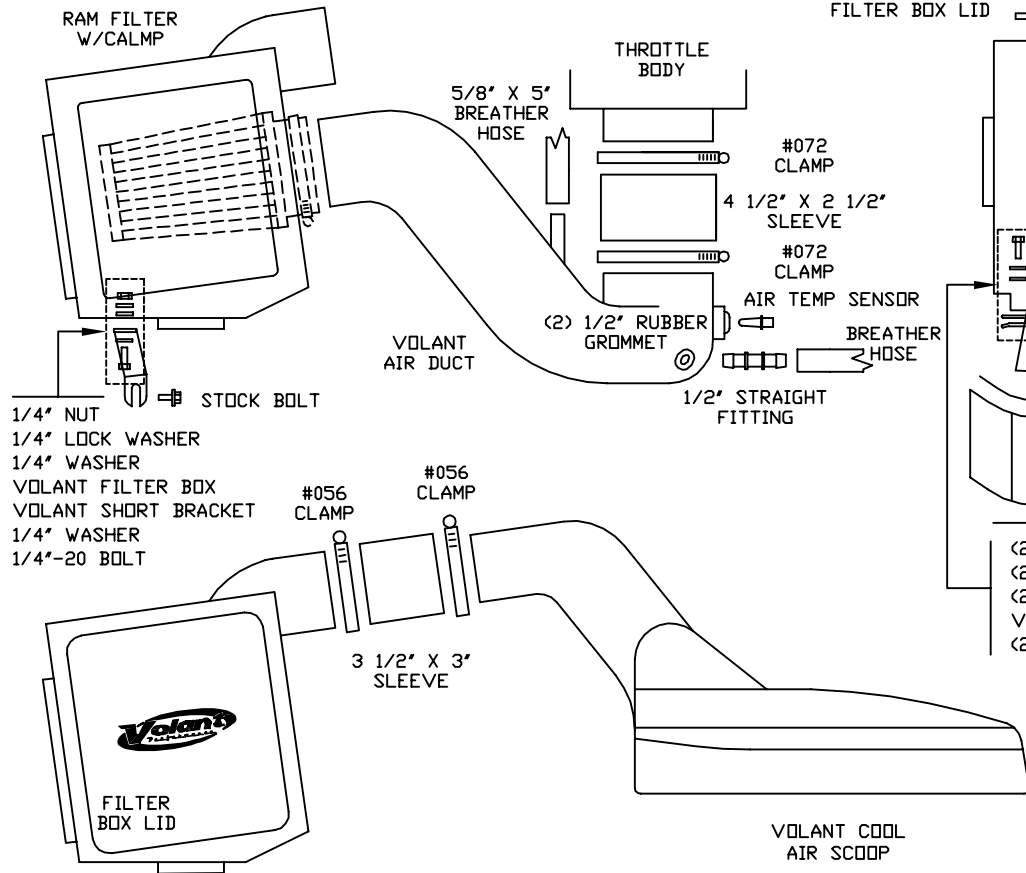


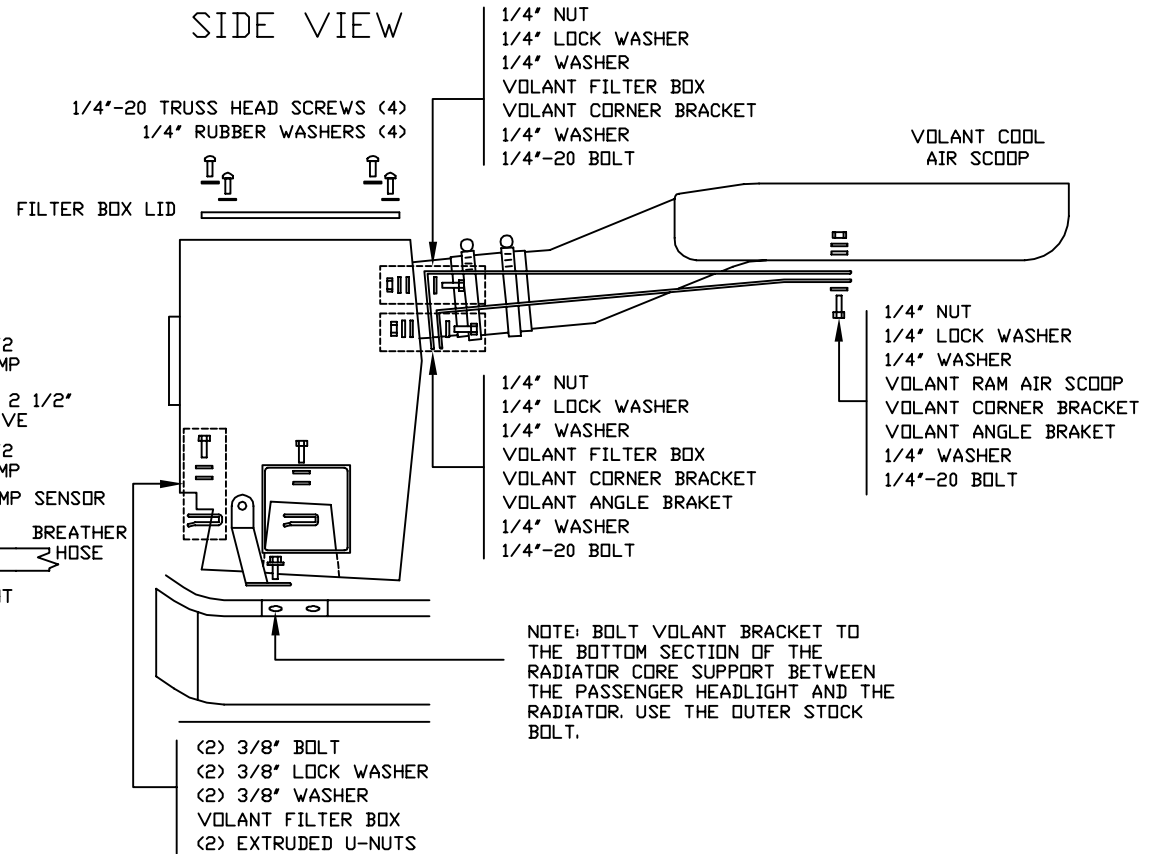
VOLANT COOL AIR INTAKES
 PART NO.: 16083
 INSTALLATION INSTRUCTIONS

16083 PARTS LIST		2	#072 CLAMPS	2	3/8" LOCK WASHERS
1	VOLANT FILTER BOX	4	1/4"-20 BOLTS	2	1/2" RUBBER GROMMETS
1	VOLANT FILTER BOX LID	2	3/8" BOLTS	2	EXTRUDED U-NUTS
1	VOLANT AIR DUCT	4	1/4"-20 TRUSS HEAD SCREWS	1	VOLANT BRACKET
1	VOLANT COOL AIR SCOOP	4	1/4" NUTS	1	VOLANT BRACKET
1	RAM FILTER W/CLAMP	8	1/4" WASHERS	1	VOLANT BRACKET
1	4 1/2" X 2 1/2" SLEEVE	2	3/8" WASHERS	1	1/2" STRAIGHT FITTING
1	3 1/2" X 3" SLEEVE	4	1/4" RUBBER WASHERS	1	5/8" X 5 BREATHER HOSE
2	#056 CLAMPS	4	1/4" LOCK WASHERS		

TOP VIEW



SIDE VIEW



NOTE: BOLT VOLANT BRACKET TO THE BOTTOM SECTION OF THE RADIATOR CORE SUPPORT BETWEEN THE PASSENGER HEADLIGHT AND THE RADIATOR. USE THE OUTER STOCK BOLT.

NOTE: REMOVE THE EXISTING GROMMETS WHERE THE STOCK AIR BOX IS ANCHORED. REPLACE THE GROMMETS WITH THE EXTRUDED U-NUTS. CLIP THE EXTRUDED U-NUTS OVER THE PREEXISTING HOLES OF THE ANCHOR POINTS. ONCE MOUNT IS SET, ATTACH THE VOLANT FILTER BOX WITH THE HARDWARE PROVIDED.





READ INSTRUCTIONS THOROUGHLY BEFORE DISASSEMBLING. DO NOT SKIP ANY STEPS.

INSTALLATION INSTRUCTIONS PART NO. 16083

Installation Instructions:

1. Remove the negative battery cable
2. Remove the Air temperature sensor by pulling straight out
3. Remove the factory 5/8 breather hose from the motor by pulling straight out
4. Remove the factory 1/2 breather line from the air box
5. Loosen the clamps holding the factory air duct in and remove the air duct
6. Remove the nut holding the factory air box to the core support
7. Pull up and out to remove the factory air box
8. Remove the rubber mounts that held the air box in place
9. Press on the 3/8 U-nuts on the factory mounting tray
10. Place the Volant air box in the factory position
11. Tighten down the Volant box with two 3/8 bolts, lock washers and washers
12. Attach the small Volant bracket to the front of the air box using a 1/4 bolt washer lock washer and a 1/4 nut, tighten the open end of the bracket to the core support using the factory bolt
13. Place the Volant filter through the opening on the Box and slide the air duct into it
14. Attach the duct to the throttle body using the 4 1/2 x 2 1/2 sleeve and 2#72 clamps
15. Slide the Volant ram filter through the air box opening and tighten clamp
16. Attach the 5/8 x 5 breather hose to the volant duct and onto the crank case vent
17. Press the ATS sensor into the 1/2 rubber grommet closest to the throttle body
18. Attach the 1/2 straight fitting into the rubber grommet and attach factory breather hose, plug open hole
19. Attach the Volant ram scoop to the volant box using the 3 1.2 x 3 sleeve and two #56 clamps
20. Attach the two long volant brackets to the scoop and air box using the hardware provided attach volant filter box lid, reinstall battery cable

WARNING: OVER TIGHTENING HARDWARE MAY ALTAR THE INTEGRITY OF THE VOLANT AIR INTAKE SYSTEM.

BEFORE ROAD TESTING

1. Start engine, leaving the transmission in park and securing the parking brake.
2. Make sure to look and listen for any unusual noises or air leaks. Repair problems if needed.
3. Once completed it will be necessary to check periodically for realignment and tightening of all connections.
4. Once all tests are completed, enjoy the performance of your new Air Intake System.

CARE AND CLEANING

Check the cotton reusable filter periodically and remove any excessive dirt build-up by tapping the filter on the ground and brushing off the loosened dirt. Clean the filter by using Volant's Filter Recharger Kit. Volant's Filter Recharger Kit is designed to restore original air flow. Re-oil every 10,000 miles without cleaning to improve filtering in sand and dirt. Clean only when dirt is very excessive or 50,000 miles.

RECOMMENDED SERVICE PARTS

RECOMMENDED SERVICE PARTS	PART NO.
REPLACEMENT FILTER	5125
CLEANING KIT	5100
PREFILTER	51908

APPLICATION GUIDE

MY	MAKE	MODEL	ENG.
02-06	Dodge	SRT10	8.3L

IMAGE

