



Protecting Your Adventure Lifestyle

Factory Fog Light Bucket assembly and Installation

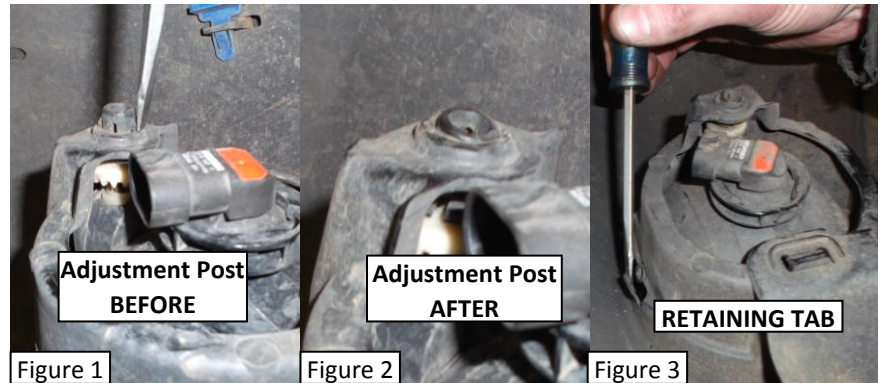
P/N 4500-2

Kit Contents:

<u>Item</u>	<u>Qty</u>	<u>Item</u>	<u>Qty</u>
Factory Fog Light Bucket	2	#10-32 KEPS Nut	16
Light Mount Bracket	4	Rubber Edge Trim	30"

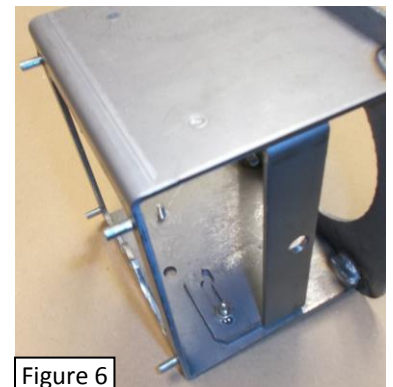
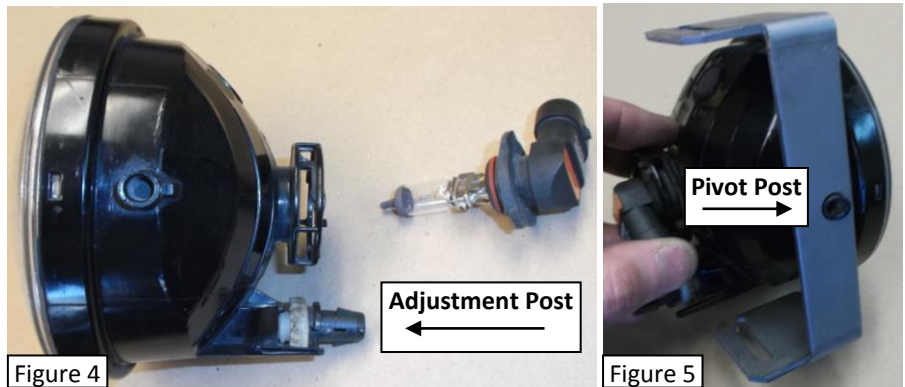
Fog Light Removal Instructions:

1. First, remove the fog lights from your factory bumper skin.
2. Release the Adjustment Post by gently compressing two tabs and push the post through the hole. See **Figures 1 & 2**.
3. Next, using a flathead screwdriver, gently pry out on the retaining tab on the outside of the light housing to release the light. The fog light will come out through the front of the bumper skin. See **Figure 3**.
4. Repeat the procedure to remove the second light.



Light Bucket Assembly Instructions:

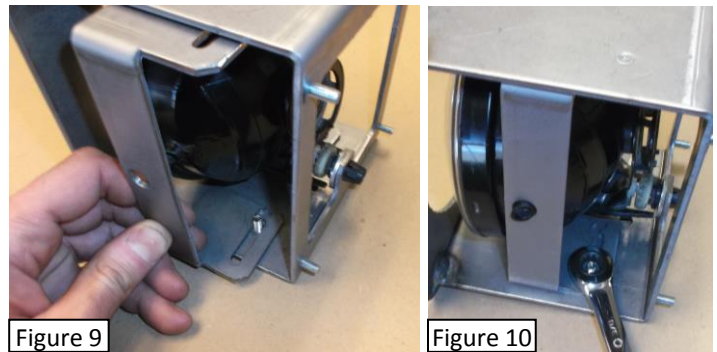
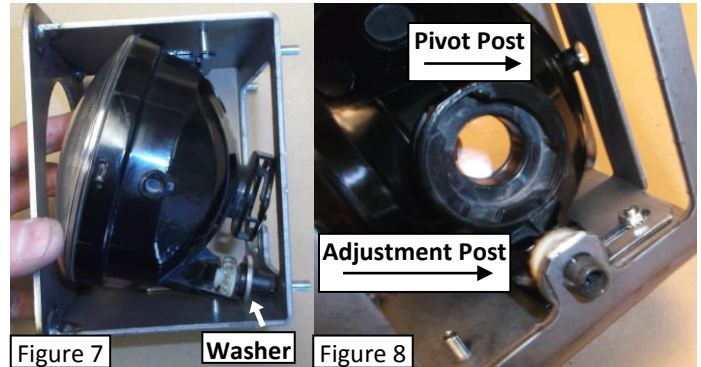
5. Remove the bulb from the fog light and screw the adjustment post all the way in to provide enough clearance for the light to slide into the side of the Light Bucket. See **Figure 4**.
6. Verify that all four Light Mount Brackets will fit over the side Pivot Post of your fog lights. See **Figure 5**. The hole may be tight due to variations in powder coat thickness. Enlarge the hole slightly using a round file, or drill bit if needed.
7. Place one of the Light Mount Brackets into the Light Bucket as shown in **Figure 6** and loosely hand-tighten with two #10-32 Nuts. (The slots in the flanges will slide over the threaded studs in the Light Bucket).
8. Place a washer onto the adjustment post of the fog light, then slide the fog light into the Light Bucket through the side at a slight angle as shown in **Figure 7** on the next page.





Protecting Your Adventure Lifestyle

-
9. Insert the Adjustment Post of the fog light through the hole in the back of the Light Bucket until it “snaps” into place (**Figure 8**). Back the adjustment post out 5-6 turns with a Phillips head screwdriver.
 10. Insert the fog light Pivot Post into the hole in the middle of the existing Light Mount Bracket. See **Figure 8**.
 11. Slide the second Light Mount Bracket into the Light Bucket and locate the same middle hole of the bracket over the second Pivot Post on the fog light (**Figure 9**). Loosely hand-tighten two #10-32 Nuts.
 12. Visually align the fog light so that it is positioned in the center of the hole in the face of the Light Bucket. Make sure to keep the Light Mount Brackets parallel to one another and firmly placed over both pivot posts of the fog light.
 13. Tighten all four #10-32 Light Mount Bracket nuts. See **Figure 10**.
 14. If you choose to install edge trim around the opening in the face of the Light Bucket, do so at this time. The trim is longer than you need...start placing the trim over the edge around the opening, and cut with scissors or box knife approximately $\frac{1}{2}$ " longer than needed. Compress the trim so that the two ends butt together. Cut additional trim off if necessary to find the right fit.



Light Bucket Installation Instructions:

15. Place the Light Buckets into your Warrior Products front bumper making sure to slide the four threaded posts on the back of the Light Bucket through the four corresponding holes in the bumper socket. For proper aiming, the adjustment post should be located on the bottom of the bucket
16. Thread four #10-32 Nuts onto the four studs on the back of the Light Bucket.
17. Visually align the Light Bucket in the bumper, then tighten the four #10-32 Nuts.
18. Repeat steps 5 through 17 to assemble and install the second Light Bucket.
19. Extend your fog light power plugs by splicing in approximately 1.5ft of wire per side (you may adjust this length depending on your specific need).
20. Insert a bulb into each socket and re-install the socket with bulb into its respective fog light housing.
21. Turn on lights to verify connections and fine tune the vertical aim of each light by using a Phillips screwdriver on the Adjustment Post from the back side of the bumper to raise or lower the beam.
22. Installation is complete.