



AUTOMOTIVE PRODUCTS, INC.

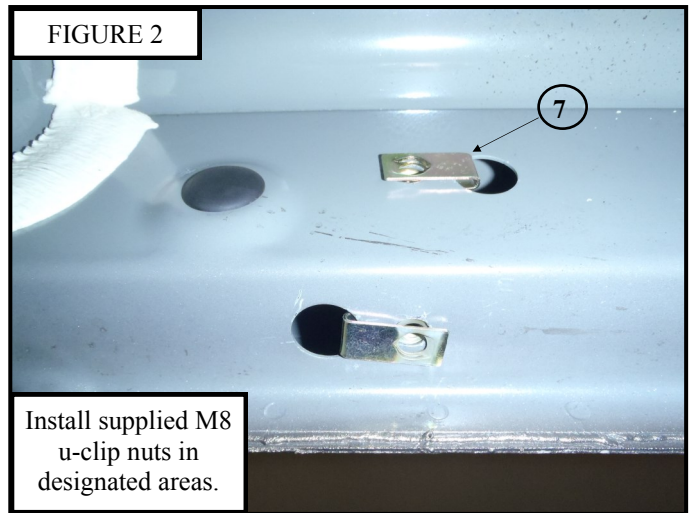
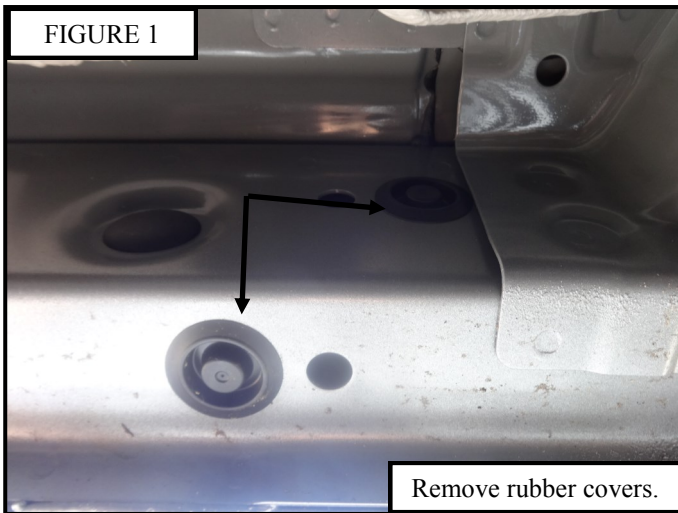
# INSTALLATION INSTRUCTIONS

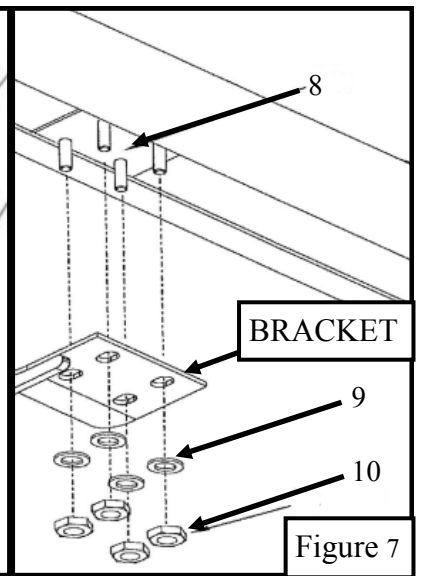
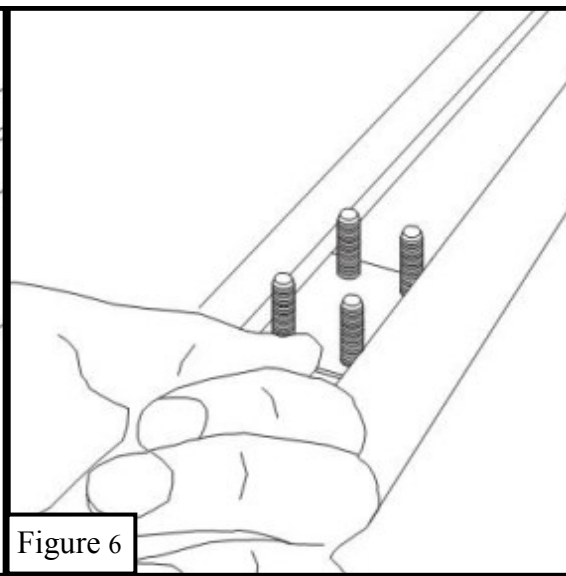
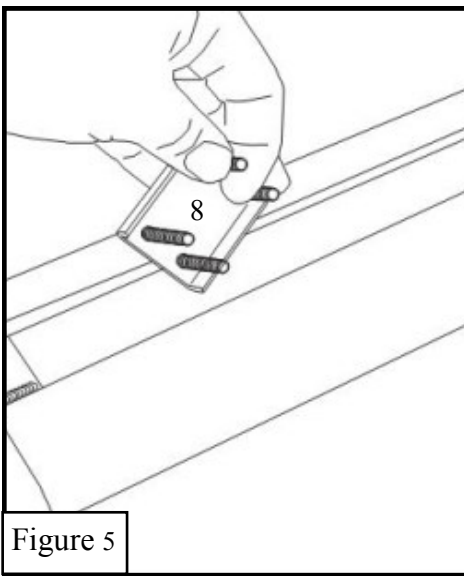
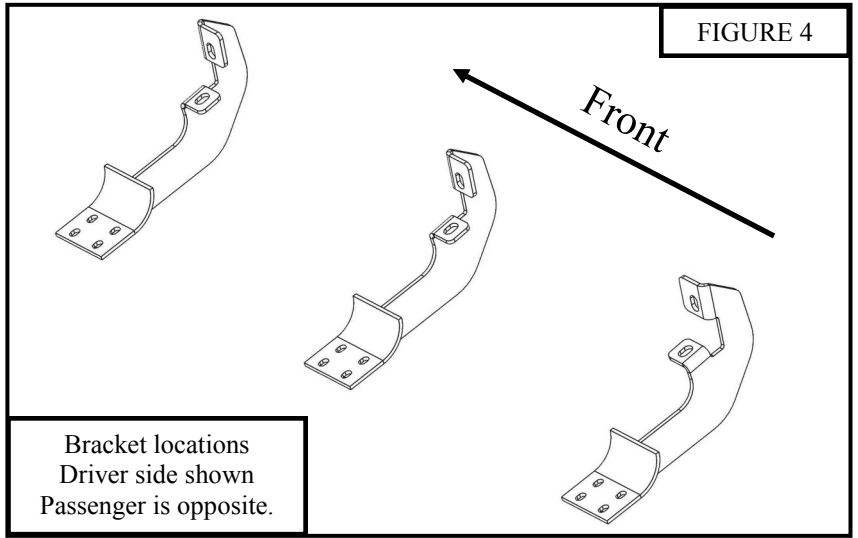
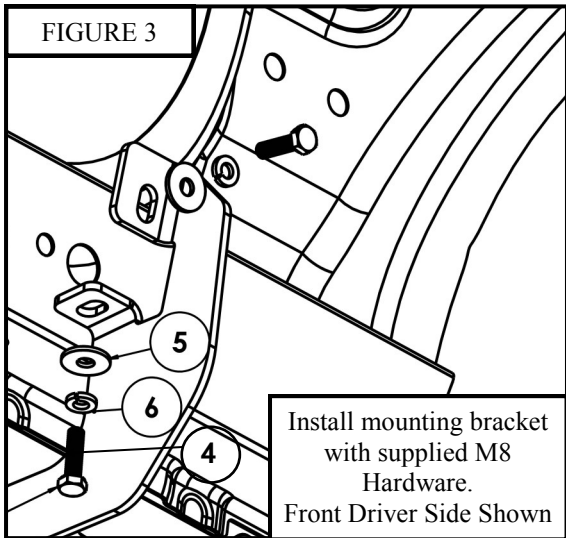
APPLICATION: MOUNT KIT #22-2075 / 2015 CHEVY COLORADO & GMC CANYON CREW CAB  
APP PART # 22-6020, 22-6025, 22-5020, 22-5025.

ITEM	QUANTITY	DESCRIPTION	TOOLS NEEDED
1	1	STEP BAR	RATCHET
2	3	MOUNTING BRACKET A	TORQUE WRENCH
3	3	MOUNTING BRACKET B	SOCKET EXT.
4	12	M8 HEX HEAD CAP SCREW (YELLOW ZINC)	13MM SOCKET
5	12	M8 FLAT WASHER 20MM (YELLOW ZINC)	13MM WRENCH
6	12	M8 SPLIT LOCK WASHER (YELLOW ZINC)	10MM SOCKET
7	12	M8 U-NUT (YELLOW ZINC)	10MM WRENCH
8	6	M6 BOLT PLATES (INCLUDED WITH STEP BARS)	
9	24	M6 FLAT WASHERS (INCLUDED WITH STEP BARS)	
10	24	M6 NYLOCK NUTS (INCLUDED WITH STEP BARS)	

**ANTI-SEIZE LUBRICANT MUST BE USED ON ALL STAINLESS STEEL FASTENERS TO PREVENT THREAD DAMAGE AND GALLING .**

1. Remove contents from box, verify if all parts listed are present and undamaged. Carefully read and understand all instructions before attempting installation.
2. If vehicle has plastic covers, remove the designated covers from the rocker panel where mounts will be placed, see Figure 1.
3. Install M8 u-clip nuts in the holes where the plastic covers were removed, See Figure 2.
4. Loosely install mounting brackets to the previously install M8 u-clips with supplied M8 hardware, see Figure 3.  
(Note: The middle bracket will be closer to the front bracket then in comparison to the rear bracket, see Figures 3 and 4 for orientation and direction of brackets.)
5. Identify driver and passenger step bars. And install bolt plates (Item 8) to the underside of the step bars. **(Figure 5 & 6).**
6. Take the drivers side step bar and place it onto the mounting bracket cradles; align the bolt plates (Item 8) with the mounting holes in the brackets and attach using (12x) m6 hex lock nuts (*item 10*), (and (12x) M6 flat washers (*item 9*) **(Figure 7).** *Do not fully tighten at this time.*
7. Align and adjust the tube steps as needed then fully tighten all hardware at this time.  
Torque all hardware to 19 ft. lbs. Repeat steps 4-8 for the passenger side.





**CARE INSTRUCTIONS**

- REGULAR WAXING IS RECOMMENDED. DO NOT USE ANY TYPE OF POLISH OR WAX THAT MAY CONTAIN ABRASIVES.
- STAINLESS STEEL PRODUCTS CAN BE CLEANED WITH MILD SOAP AND WATER. STAINLESS STEEL POLISH SHOULD BE USED TO POLISH SMALL SCRATCHES.
- GLOSS BLACK FINISHES SHOULD BE CLEANED WITH MILD SOAP AND WATER.