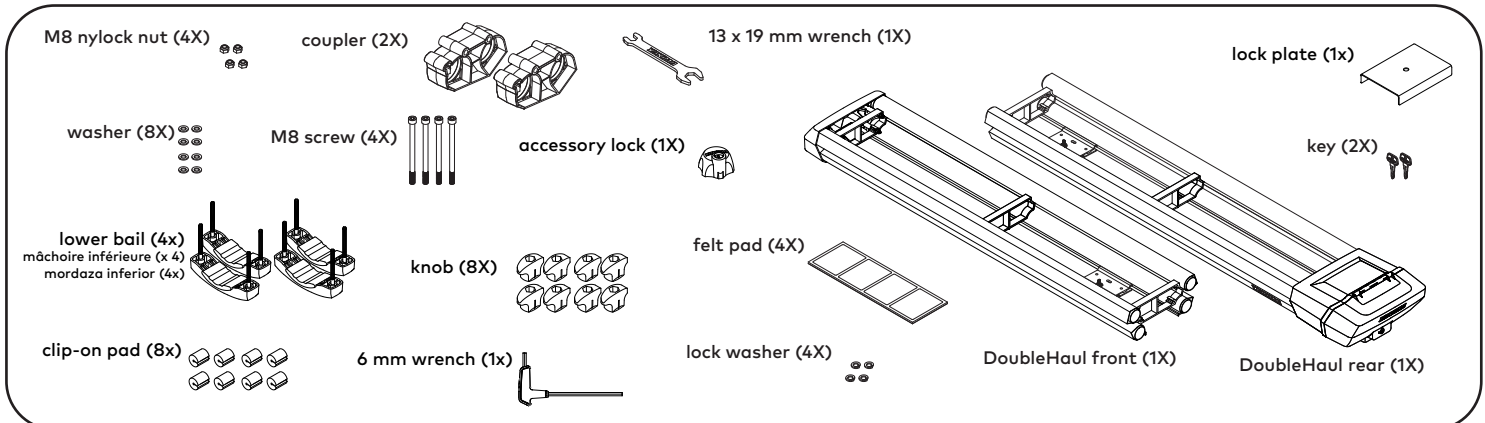
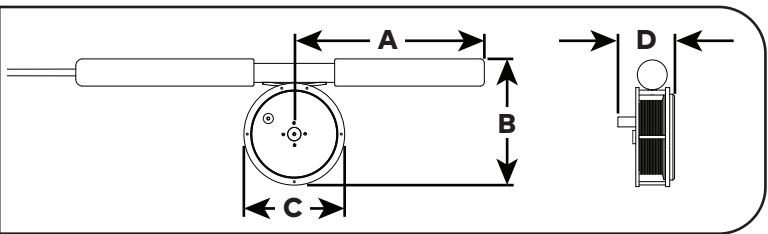


## CONTENTS



	UPPER COMPARTMENT	LOWER COMPARTMENT
<b>A</b>	200 mm	135 mm
<b>B</b>	140 mm	134 mm
<b>C</b>	115 mm	110 mm
<b>D</b>	93 mm	80 mm



**STIPPING GUIDES**

Maximum size - 40 mm

**LOAD CAPACITY**

4 fly rods (2 rods up to 12-wt and 2 rods up to 10-wt). Longer rods may be broken down to fit.

**CROSSBAR SPREAD**

27" - 108" (68.6 - 274.3 cm)

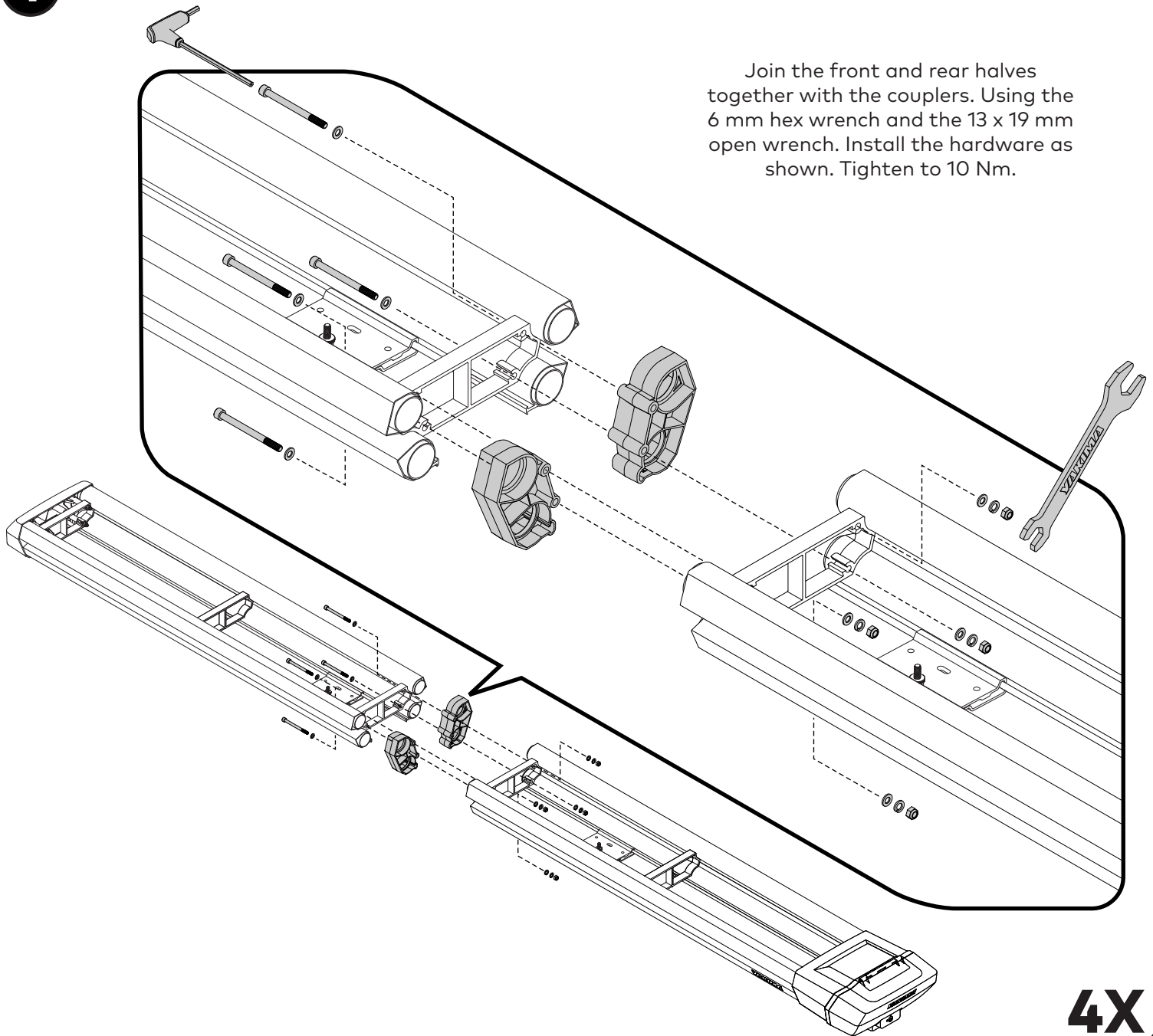
**AVAILABLE ACCESSORIES**

**Smart-Slot Kit 3**  
Yakima Part # 8007356

**NOTE: If you wish to use DoubleHaul in its half-sized configuration, proceed to page 5.**

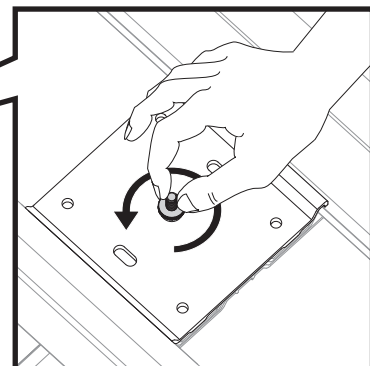
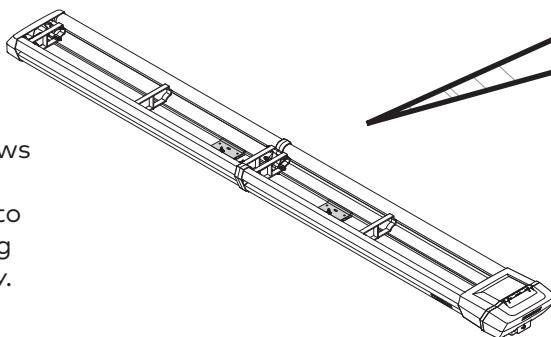
## INSTALLATION

### 1 JOIN THE TWO HALVES TOGETHER.



### 2 LOOSEN THE MOUNTING PLATES.

Turn the thumbscrews on the mounting plates a few turns to allow the mounting plate to slide freely.

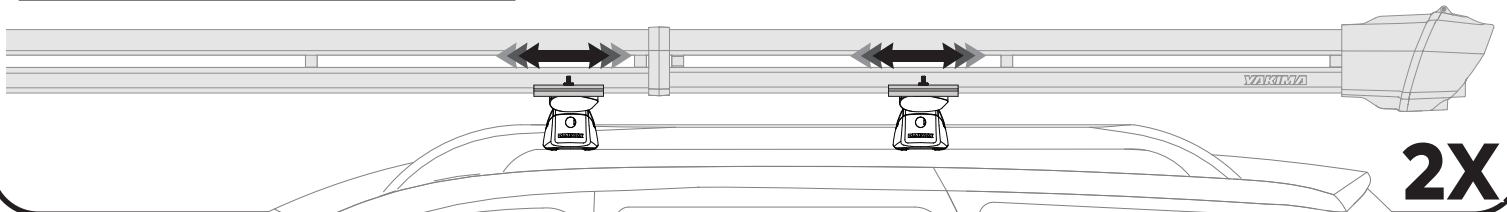
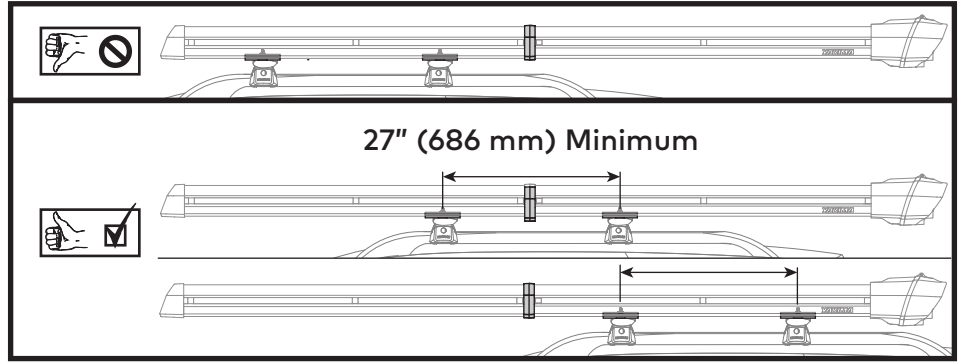


**2X**

### 3 PLACE DOUBLEHAUL ONTO YOUR CROSSBARS.

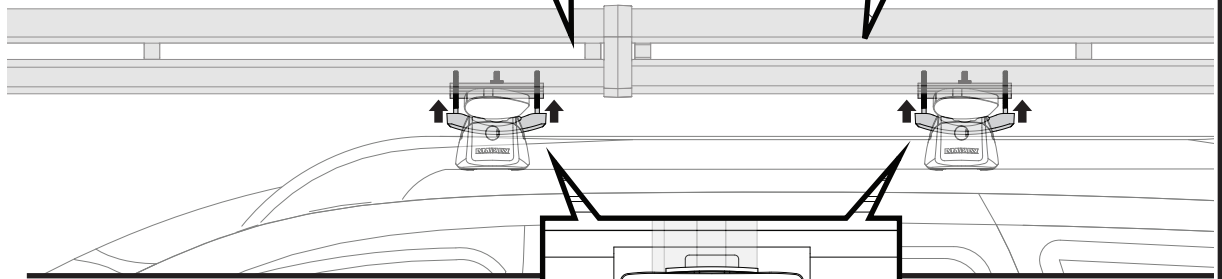
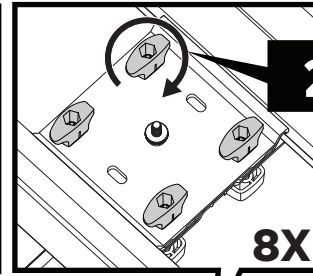
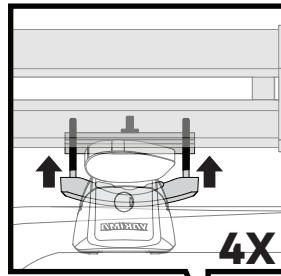
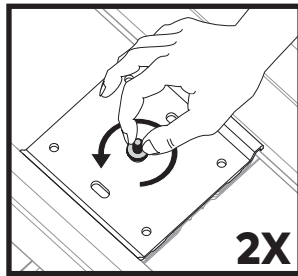
- Consider rear-hatch access when choosing your position.
- With assistance from a friend, carefully place and position DoubleHaul on your crossbars.
- Slide the plates so they are centered over your crossbars.
- **Continue to support DoubleHaul as necessary until the mounts have been fully tightened in the next step!**

**Do not allow DoubleHaul to tip and damage your vehicle!**

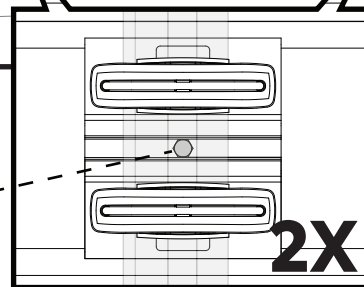


### 4 ATTACH THE MOUNTING HARDWARE.

Guide the clamps around the crossbar and up through the mounting plates, then attach and tighten the knobs to 2 Nm. The knobs must be oriented as shown. Then tighten the thumbscrew (make sure the bolt is captured in the underside channel).

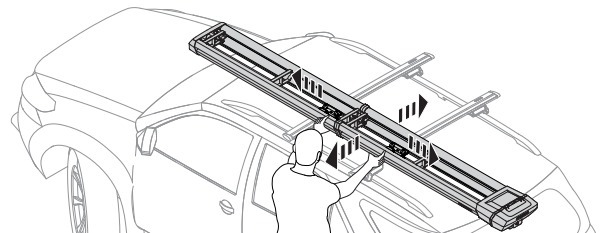


**Note:** For mounting on 2" round or 2" square steel tubing, remove the plastic bails from the U-bolts before assembling the clamping system.



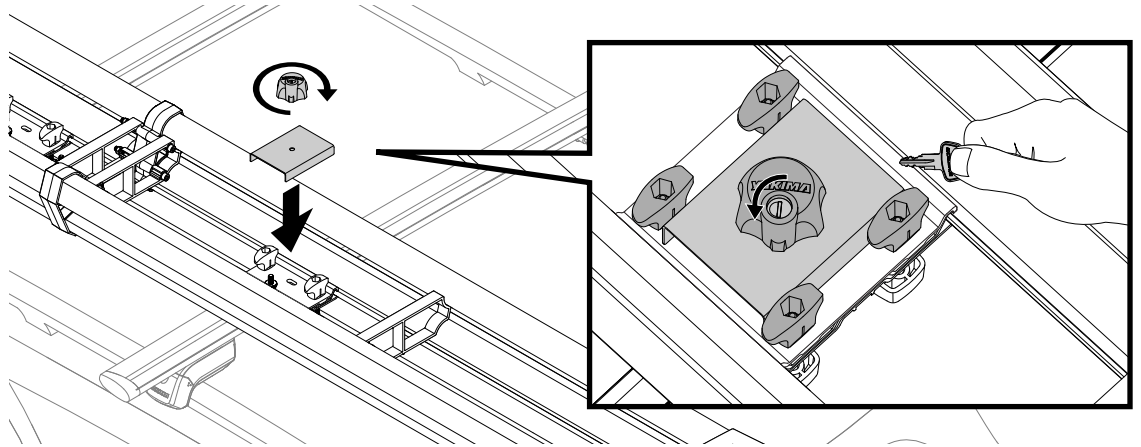
### 5 TEST THE INSTALLATION.

Test the installation by pulling and pushing in all directions. The DoubleHaul should not slide or move on the crossbars. Re-tighten the knobs if necessary.



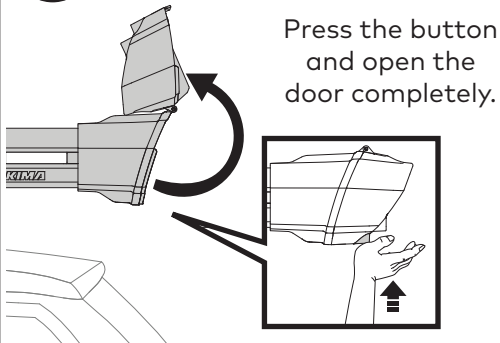
## 6 LOCK THE CARRIER TO THE CROSSBARS.

Set the lock plate onto one of the mounting plates as shown. Then screw the accessory lock onto the thumbscrew bolt. The knobs must be oriented as shown for the plate to seat properly. Use the key to lock the accessory lock.

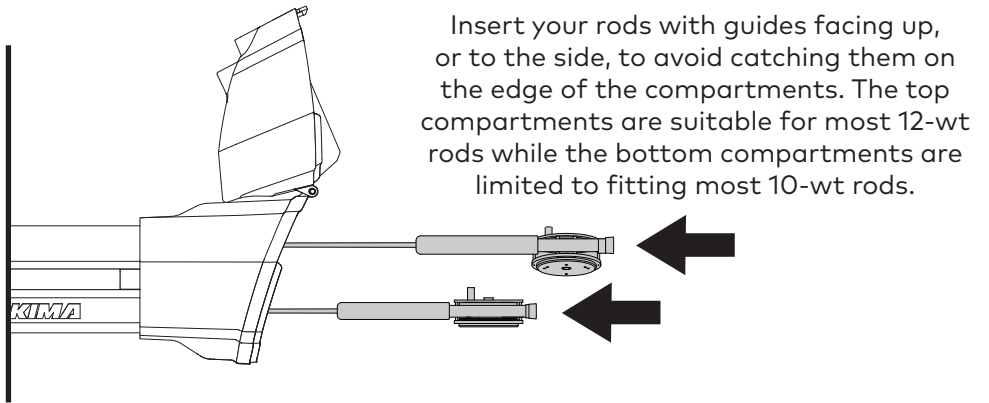


## LOADING •

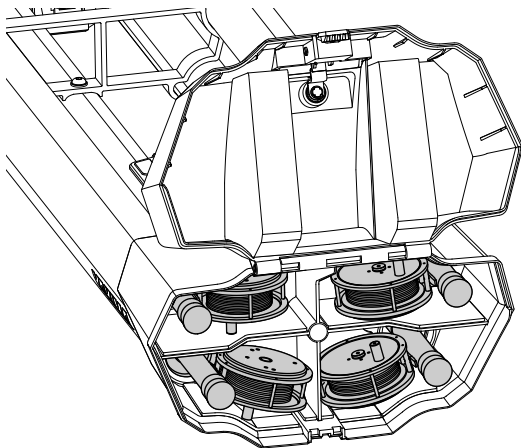
### 1 LOAD YOUR RODS.



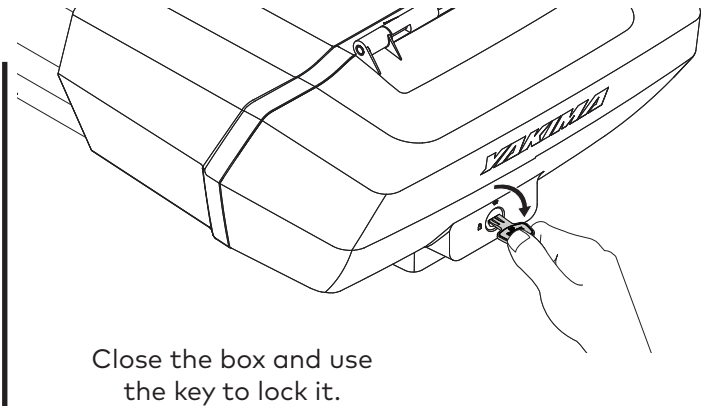
Press the button and open the door completely.



Insert your rods with guides facing up, or to the side, to avoid catching them on the edge of the compartments. The top compartments are suitable for most 12-wt rods while the bottom compartments are limited to fitting most 10-wt rods.



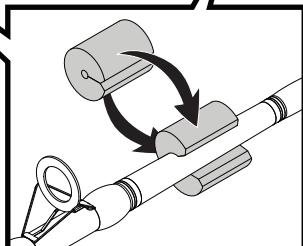
Rest the reels on their sides and ensure the rods are fully inserted.



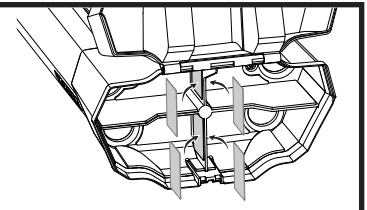
Close the box and use the key to lock it.

## OPTIONAL

For extended trips or when traveling on dirt roads, use the included clip-on pads for additional guide and rod protection.



The included felt pads are optional and provide additional protection for your reels from contact with the inner vertical wall on the DoubleHaul.



## IMPORTANT WARNINGS

### Rack Installation

Inadequately secured loads and incorrectly mounted roof racks and accessory racks can come loose during travel and cause serious accidents! Therefore, installation, handling, and use must be carried out in accordance with product and vehicle instructions.

In addition to these instructions, review the mounting instructions for the roof rack and the operating instructions of the vehicle.

These instructions should be kept together with the vehicle's operating instructions and carried in the vehicle when in use and en route.

For your own safety, you should only use roof racks that are authorized for use with your vehicle.

For roof racks that do not specify the distance between the front and rear crossbars, the distance shall be at least 700 mm or as large as possible. Please note that changes (e.g., additional drill holes) to the accessory rack's attachment system are not permissible.

Check attachment hardware and load for tight fit and function:

- Before the start of any journey
- After driving a short distance following rack or load install
- At regular intervals on longer journeys
- More frequently on rough terrain
- After interruption of a journey during which the vehicle was left unsupervised (check for damage due to outside intervention)

### Rack Loading

Do not exceed the maximum load specified for the roof rack, accessory rack or the maximum load recommended by the vehicle manufacturer.

Max Roof Load = weight of roof rack + weight of accessory racks + weight of load.

Load shall be uniformly distributed with the lowest possible center of gravity.

Load should not substantially extend beyond the loading surface of the roof rack.

### Vehicle Driving and Regulations

The speed driven must be suited to the load transported and to official speed limits. In the absence of any speed limits, we recommend a maximum speed of 80 mph (130 km/h).

When transporting any load, the speed of the vehicle must take into account all conditions such as the state of the road, the surface of the road, traffic conditions, wind, etc. Vehicle handling, cornering, braking and sensitivity to side winds will change with the addition of rooftop loads.

If this product is off-road certified, it is designed and intended to be used on forest service roads, access roads or other non-technical terrains at moderate speeds. It is not to be used while rock-crawling, jumping, bogging, or other technical off-road terrains. When using off-road certified products with non-off-road certified products, always follow the warnings and restrictions as stated in the non-off-road certified product instructions.

### Maintenance

The accessory rack should be carefully cleaned and maintained, particularly during the winter months. Use only a solution of water and standard car wash liquid without any alcohol, bleach, or ammonium additives.

For reasons of fuel economy and the safety of other road users, the accessory rack and roof rack should be removed when not in use.

Periodically inspect accessory rack for damage. Replace lost, damaged, or worn parts. Use only original spare parts obtained from a stocking specialist, dealer, or manufacturer.

Any changes made to the roof racks and accessory racks, as well as the use of spare parts or accessories other than those supplied by the manufacturer, will lead to the lapsing of the manufacturer's warranty and liability for any material damage or accidents. You should observe these instructions to the letter and only use the original parts supplied. numbers below and register them at [www.yakima.com](http://www.yakima.com).