



# ZROADZ

DYNAMIC LED MOUNTING SOLUTIONS



## 2007 - 2016 JEEP WRANGLER

PART#: Z394811-KIT

### REAR WINDOW HATCH HINGE - LED LIGHT MOUNTS

PARTS ARE PATENT PENDING. ALL RIGHTS RESERVED - COPYRIGHT ©2016 - ZROADZ LED, INC.

#### PARTS INCLUDED

- (2) Rear Hatch Hinge Mounts:
- (1) Driver Side and
- (1) Passenger Side.

#### INSTALLATION GUIDE

##### START HERE

PLEASE READ AND UNDERSTAND ALL INSTRUCTIONS BEFORE INSTALLATION. Auto makers offer varied models to each vehicle and occasionally manufacture more than one body style of the same model.

\* APPLICATION MODELS VARY. WE RECOMMEND TO VERIFY FITMENT BEFORE BEGINNING INSTALLATION PROCESS.  
\* IMAGES FEATURED IN THE INSTRUCTION DOCUMENTS MAY NOT ALWAYS EXACTLY MATCH YOUR MODEL OR PART.

#### LED LIGHTS INCLUDED

Z394811-KIT - (1) ZROADZ 30" LED Light Bars

#### HARDWARE INCLUDED

NO HARDWARE INCLUDED  
(Mounts with OEM Hardware)

#### TOOLS REQUIRED

- Socket Set & Ratchet Tool
- Ratchet Extensions
- Various Wrenches
- Torq Bit Set

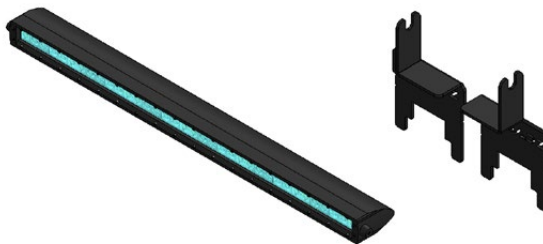
##### BEFORE YOU BEGIN

START HERE: Turn off engine, chalk tires with stop block, open the hood and disconnect the battery.

##### LED LIGHT BRACKET INSTALLATION

- STEP 1** 1) Begin by laying out your parts and set them up into a similar configuration as seen in Figure #1.

FIG 1



##### PRO TIP:

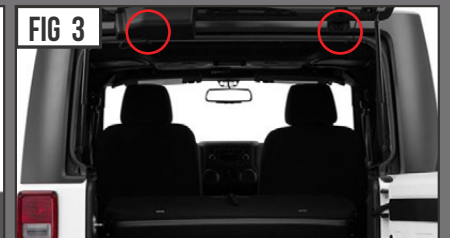
APPLY A PROTECTIVE LAYER OF 3M MASKING TAPE AROUND THE APPLICATION AREA.

- 2) Identify the Jeep's Rear Window Hatch Hinge. Open Hatch and Tail Gate. Carefully loosen the bolts that secures the Hatch Hinge just enough so that there will be a slight gap. **WARNING** Do not fully remove hardware.

FIG 2



FIG 3





# ZROADZ

DYNAMIC LED MOUNTING SOLUTIONS

## LED LIGHT BRACKET INSTALLATION - CONTINUED

PARTS ARE PATENT PENDING. ALL RIGHTS RESERVED - COPYRIGHT ©2016 - ZROADZ LED, INC.

### STEP 3

Close Hatch and identify which bracket goes on Driver Side and which bracket goes on Passenger side.

3) Carefully move bracket into position so that the Bracket Mounting Tabs fit and slip into place and align with the loosened bolt.

### STEP 4

SEE FIGURES 4 & 5

4) Secure bracket to Jeep cab with factory bolts. Repeat on opposite side of vehicle.



FIG 4

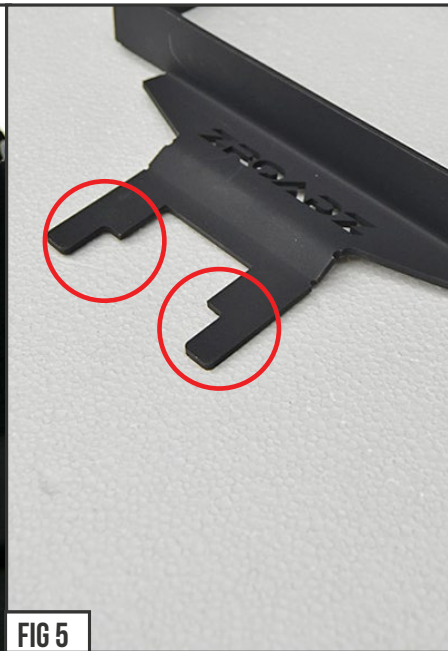


FIG 5

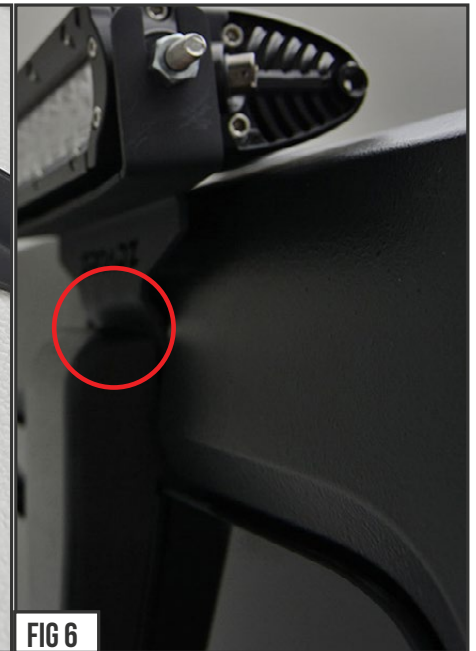


FIG 6

### STEP 5

SEE FIGURE 6 & 7

5) Mount (1) LED Light Pod to each bracket and then tighten mounting bolts.

### STEP 6

6) ZROADZ recommends LED Lights be wired with ZROADZ harness kit (part# Z390020S-A) or by utilizing a compatible custom wiring harness. Wiring must be installed by competent & knowledgeable automotive electrician.

### STEPS 7

#### ADJUSTMENT TIPS

7) To adjust the angle of your Light Bar, rotate the LED(s) to adjust the angles till your desired light pattern is reached. There will be minimal adjustment due to curved light bar orientation. You may then tighten the hardware and secure everything into place. Be careful not to over tighten the mounting hardware.

It is best to adjust the angle with the vehicle on level ground with lights facing a wall, garage door or other solid barrier. We recommend checking from a distance of 25'. Your installation is now completed.

## FINISHED EXAMPLES

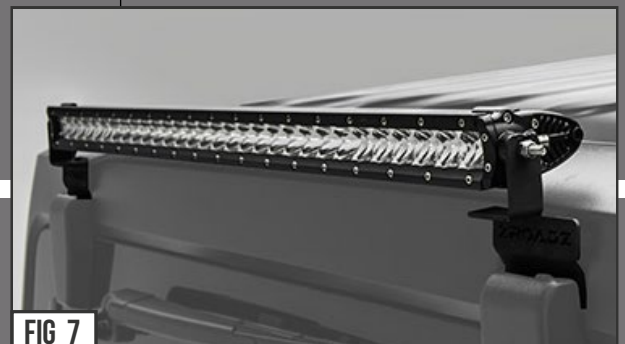


FIG 7



FIG 8

## LED LIGHT BRACKET INSTALLATION - PROCESS COMPLETE