



INSTALLATION INSTRUCTIONS

2019-2021 FORD RANGER

PART NUMBER

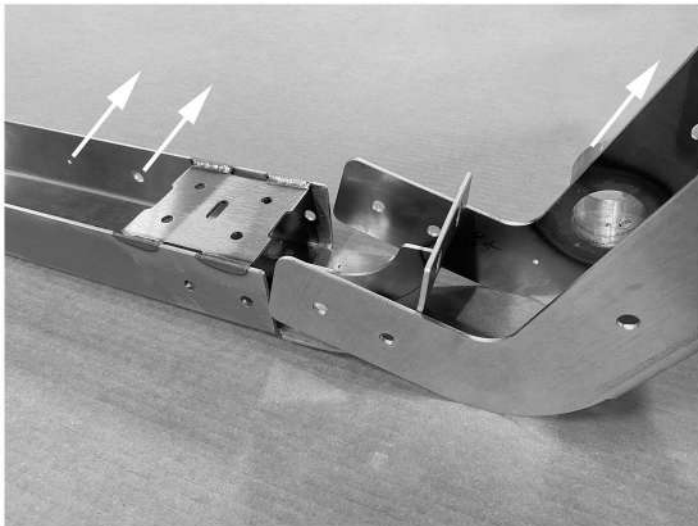
Z835101

TOOLS REQUIRED

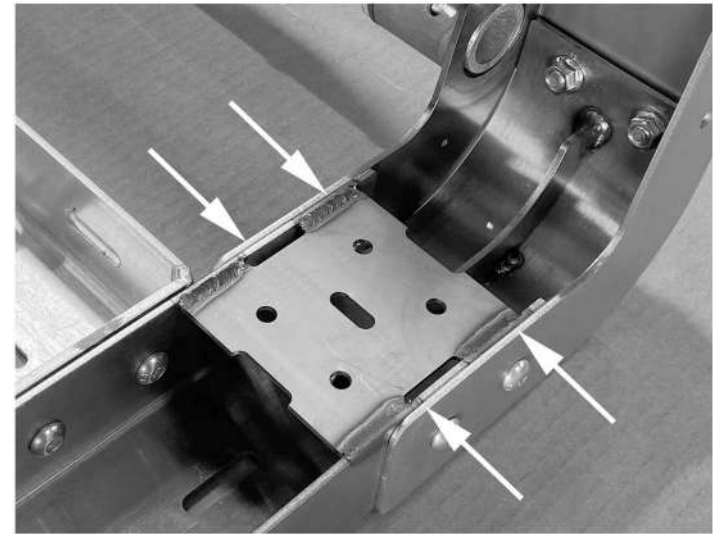
- >15mm wrench
- >13mm wrench
- >10mm wrench
- >3/8" drive ratchet
- >Torque wrench
- >Wire cutters

INCLUDED

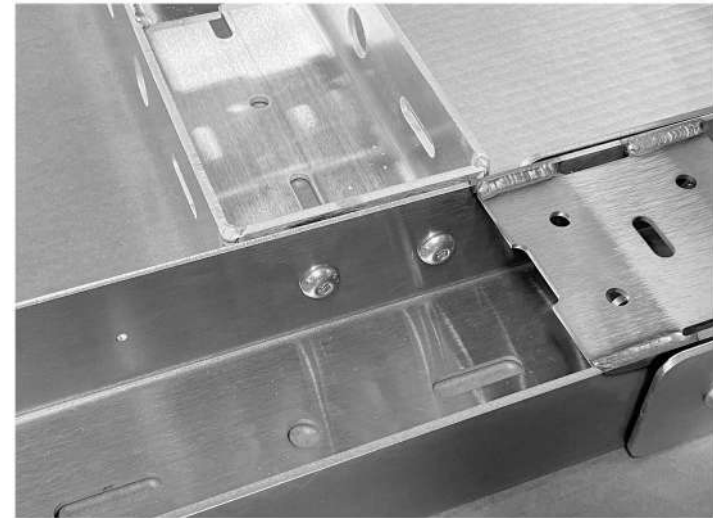
- >7/16" HEX KEY
- >PUSH RIVETS
- >WIRE CLAMPS
- >WIRE HARNESS
- >ZIP TIES



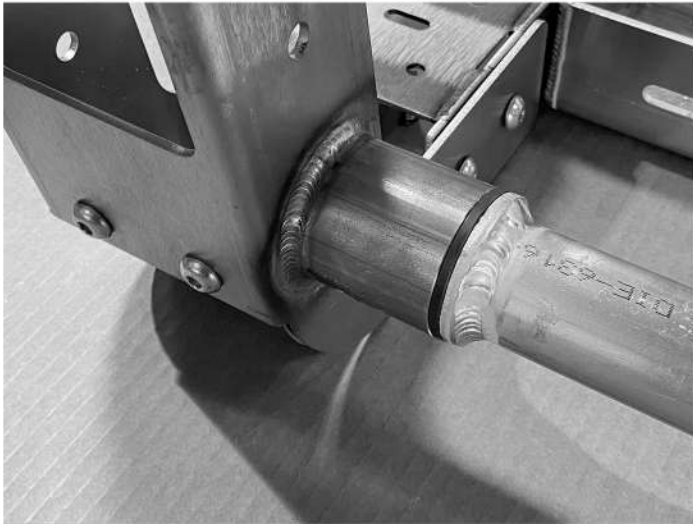
1. Install each leg to the transverse cross member. Use (6) 3/8"x1" button head bolts and flange lock nuts for each corner. Do not tighten securely. Make sure holes on the transverse cross member and gate pivot tube are facing the same direction.



2. Align the leg with the transverse cross bar and tighten all fasteners. Torque to 30 ft/lb. Confirm leg flanges are parallel with cross bar as shown.



3. Connect one side of both of the longitudinal cross bar as shown. Use (2) 3/8"x1.25" button head bolts and flange lock nuts. Torque to 30 ft/lb.



4. Install the gate shaft bushing into the leg housing as shown for both sides of the rack. Install the gate shaft into the bushing. Repeat for opposite side.



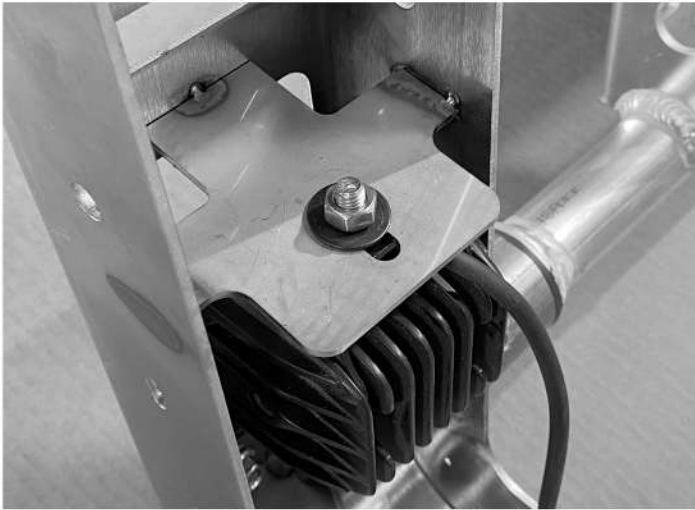
6. Install the rubber stop to each of the (4) legs. Use (1) 6-32 x 3/4" machine screw and (1) 6-32 nylon lock nut for each stop.



5. Connect the opposite side longitudinal cross bar as shown. Use (2) 3/8"x1.25" button head bolts and flange lock nuts. Torque to 30 ft/lb. Install the harness bracket as shown, use (2) 3/8" flange lock nuts, Torque to 30 ft/lb.



7. Close the gate door and lock into legs using (4) supplied pins. Install the accessory mount panel as shown using (4) 1/4" x 3/4" hex bolts, washer and nuts.



8. install (4) 2" LED lights into legs as shown using 8mm x 25mm hex bolt, flat washer and lock washer.



10. Cut (4) pieces of foam and attach adhesive side towards the rail to retain the bolts.



9. install (4) Flat head carriage bolts into the rack base rail.



11. Install (8) 2" button cap bolts into each of the (2) rails as shown. Once the thread passes through, install the welded nut with the cap on each bolt. Make sure the bolt is only far enough through to install the nut in order to clear the bed rail of the truck during installation.



12. Install the driver side base rail as shown. Do not tighten the clamp bolts under the rail at this time.



14. Install the rack to the base rails as shown. Center the rack in the bed.



13. Install the passenger side base rail as shown. Do not tighten the clamp bolts under the rail at this time.



15. Use (2) 3/8" hex lock nuts and (2) flat washers to secure the legs of the rack to the base rails. Secure the clamp bolts under the rail to the bed (From step 11.) to secure the rail to the vehicle.

USE OF THIS PRODUCT

Use of this product is limited to the application outlined in these instructions and is not intended to be installed on vehicles to which the product was not designed.

Make sure all fasteners are torqued to the specification outlined in the instructions. Check all fasteners periodically and inspect structural elements for excessive wear or corrosion.

ZROADZ, Inc is not liable for the performance of accessories mounted to the rack.

The rack is designed to load a maximum of 400lbs distributed evenly across the top of the rack during slow crawl off-road use, 800lbs of on-road driving and 1200lbs static load while the vehicle is stationary. Accessories mounted to other portions of the rack must be included in this calculation.

These capacities are for the rack only and are limited to the capacity of the vehicle itself.

This rack is not designed to carry any load during high speed, off-road driving. Use of this rack in this manner will void the product warranty and can cause damage to the vehicle.

Accessory mount plates located under the aluminum longitudinal cross bars are designed to hold a maximum of 90 lbs distributed evenly across all 6 plates. Accessory mount plates under the steel transverse cross bars are designed to hold a maximum of 75 lbs distributed evenly across all 3 plates for each cross bar.

Aluminum access gates with accessory mount plates installed are designed to hold 35 lbs of accessories. The access gate features MDS - MOLYBDENUM DISULFIDE FILLED (MDS) pivot bushings and do not require lubrication. Do not lubricate the nylon bushings.

Check your local and state laws regarding truck racks that can extend loads and devices outside the boundaries of the vehicle.